

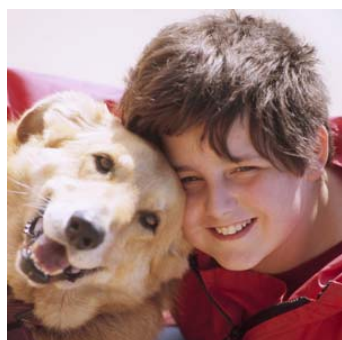
Great places to walk your dog!

The National Trust can offer you and your dog a huge variety of places to go for a walk, close to urban areas, on the coast and in the countryside.

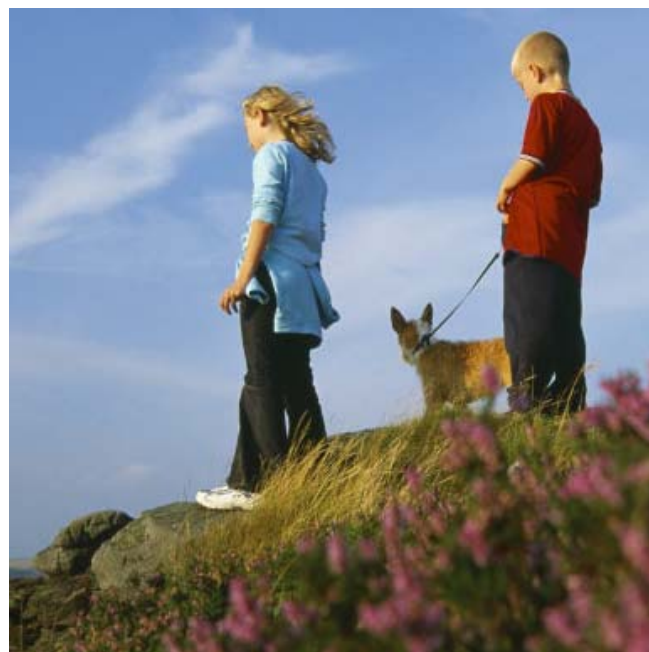
Walking the dog can be great exercise and a wonderful way to relax. It can be a real incentive to get out and discover new places! For many people it is also an essential aid to mobility and experiencing the outdoors.

In welcoming you and your dog, all we ask is that you keep your dog under control and deal with its waste thoughtfully. In return, we offer some fantastic locations to explore, and provide facilities and information where we can.

A few great places to walk your dog...



- **Attingham Park**
near [Shrewsbury](#)
- **Basildon Park**
near [Reading](#)
- **Brockhampton Estate**
near [Hereford](#)
- **Castle Ward**
near [Downpatrick](#)
- **Clytha Park**
near [Abergavenney](#)
- **Clumber Park**
near [Worksop](#)
- **Downs Banks**
near [Stoke-on-Trent](#)
- **Hardcastle Crags**
near [Hebden Bridge](#)
- **The Leas**
near [South Shields](#)
- **Lyme Park**
near [Stockport](#)
- **Plymbridge Woods**
near [Plymouth](#)
- **Sherborne Estate**
near [Cheltenham](#)
- **Sheringham Park**
[North Norfolk](#)
- **Stourhead Estate**
near [Warminster](#)



To get the most from a visit with your dog to any of our properties, it is best to do a little research before you set out by looking at:



Our website: Search for the place you want to bring your dog to and check its 'facilities' page. This will indicate where dogs are welcome, the level of control required and what facilities we offer for them.



Our Members Handbook: Provides information on access and facilities. If no dog symbol is given we regret that only assistance dogs are permitted.



Useful info to help you enjoy your day out



Assistance dogs

Dogs assisting visitors with disabilities are welcome inside all our houses, gardens, restaurants and shops.

Facilities

Many of our sites provide facilities for you and your dog, such as shady parking space in car parks, water for drinking bowls and hitching posts where dogs may be left. These facilities will vary from property to property and according to how busy each property may be on a particular day.



Dog fouling

Never leave poo where people walk, play or picnic. We ask that if your dog fouls, particularly in car parks and on paths, you pick up and remove the mess. Flick it into rough grass or woodland, or take it away with you and dispose of it at home. There may be dedicated bins to put it in at heavily used sites.

Houses and gardens

Due to the risk to fragile interiors and flowers, we regret that a dog can not accompany you inside our houses and gardens unless it is an assistance dog. It may remain in your car, but please take care on hot days.



Beaches

A bracing seaside walk with your dog can be a wonderful thing. With over 700 miles of National Trust coastline, we have plenty of great locations for you to discover. At some of our beaches there are seasonal dog restrictions at busy times of the year. These are in place to manage problems with dog fouling and protect the interests of other users, particularly families with children. Check our **Dogs and Beaches** fact sheet for more info.



Walkies in the wild

Help keep the countryside a safe, healthy and enjoyable place for you and your dog, other visitors, wildlife and livestock:

- Always keep your dog in sight and under control; use a lead if need be.
- Never let your dog chase wildlife or farm animals; it causes serious injuries and your dog could become lost, hit by a car or shot.
- Observe local notices when you're out and about. There may be restrictions in woodland or on farmland at sensitive times of year, like in spring, during the lambing season, and between the beginning of March and the end of July when ground-nesting birds are on eggs or raising their young.
- Try to check before you visit as situations may differ from place to place.



Find out more in the leaflet **You and Your Dog in the Countryside**. Call 08701 206466 for a copy.

Happy walking...

www.nationaltrust.org.uk/placestovisit

www.thekennelclub.org.uk

Supported by



THE KENNEL CLUB