

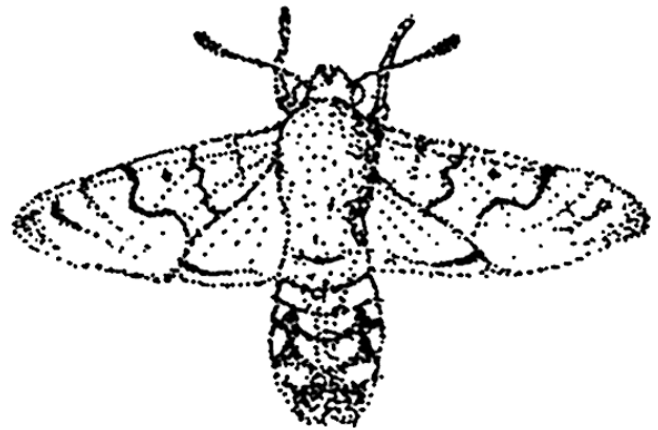


## Come to the light! Magical moth watching

Whilst you and I are soundly asleep a whole world of wildlife is at its most active. Many of these nocturnal creatures are a bit tricky to spot but, luckily for us, most moths are attracted to light making them easy to spot with a little help from a handy sheet. Night-flying moths are attracted to light because they use the light of the moon to navigate by. So what we're really doing is creating a much nearer, and brighter moon to draw them in for a good look.

### You will need:

- A large white sheet
- Some string
- A good torch or lamp - the brighter the better!
- A license to stay up late.

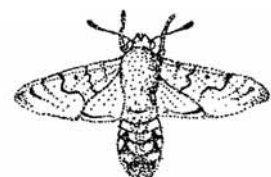


### What to do:

1. Wait for a good night - still and cloudy is best, or the brightness of the moon will outshine your torch!

2. Stretch your sheet out between two trees to make a white screen. Hang, hold or balance your brightest torch behind this.

3. Wait for the little beauties to come to you! If you're very careful you can collect them in a clear plastic pot for a good look



You can expect to get other night fliers too. Anything that has wings and is attracted to the light will head for your sheet so, depending on the time of year, you might get beetles, craneflies and other night-flying flies.