

Applying for Education Group Membership

Type of organisation

(Please tick as appropriate)

- Primary
- Middle
- Secondary
- Sixth form/FE College
- Youth Group whose members are in full-time education
- Special educational needs/disability
- Higher Education
- Non-profit-making field study centre
- Scouting Movement (Scouts, guides, boys brigade etc.)
- Home educators

Subscription fees for 2011

(inclusive of VAT)

Subscriptions cover one year from the month of joining

Number on Roll	Rate
(Schools, Home-Educators and the Scouting Movement)	
Home educating family	£34.50
Under 50 pupils	£34.50
51 - 100	£57.50
101 - 200	£70
201 - 500	£73.50
Over 500	£85
Tertiary / Field Study	£109

We will not share your information with any other organisations.
Please allow 21 days for processing.

Subscription and payment details

I enclose remittance for £

(All cheques must be made payable to The National Trust)

Signature

Date



For further details about our learning work in England, Wales and Northern Ireland, please visit www.nationaltrust.org.uk/learning

For alternative formats, please call us on 01793 817646 or email learning@nationaltrust.org.uk

Photography: NTPL/Mark Bolton/David Levenson/John Millar/Arnhel de Serra/Paul Harris
Printed on 100% recycled paper. Please recycle this leaflet after use. Stock Number: 73035/11
© National Trust 2011. The National Trust is a registered charity no. 205846

Education Group Membership 2011



National Trust



Learning and the National Trust

The National Trust is recognised as being Britain's biggest classroom, and is one of the largest educational resources in the world. We care for countryside, coastline, historic houses, castles, industrial monuments and mills, churches and chapels. This means we can offer you a wide range of fantastic learning opportunities at a wealth of amazing places.

The Education Group Membership Scheme

Membership is open to non-profit-making education groups, whose members are in full-time education.

Education Group Membership is specially designed to allow education groups free entry to places owned by the National Trust.

Home education

We also extend Education Group Membership to home-educating families. So that we can distinguish between this membership category and our standard Family Membership, home-educating families are entitled to use their Education Group Membership in normal school hours during school term time only. We are unable to extend this membership category to cover visits made during Bank Holidays, weekends or school holidays. Visits must be booked 7 days in advance or normal admission charges will apply.



Benefits of Education Group Membership

- Free planning and preparation visits to sites for group leaders. These preliminary visits should be booked in advance.
- Membership pack, which includes the annual handbook and 'Making the most of your learning visit' guide.
- The Trust's membership mailings three times a year with the National Trust Magazine.

Terms and conditions

The National Trust welcomes education groups to its places.

To gain the most from your visit the following conditions apply;

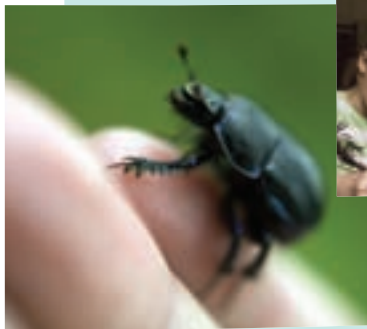
- All visits must be booked at least 7 days in advance and group leaders should present a valid Education Group Membership card(s) when visiting to avoid normal admission fees being charged.
- Where special education activities are offered by a place, additional charges may apply.
- For your legal protection, all education groups (including home educating families) must provide evidence that they have public liability insurance with a minimum £5M indemnity limit when they take out Education Group Membership, and must ensure their insurance cover is valid when they visit.

Group supervision

For primary aged children we require one accompanying adult for every eight pupils. For secondary and tertiary we require one adult for every fifteen pupils or students. For all educational organisations a minimum of two supervising adults per group are required.

Groups with additional needs or undertaking specialised activities need to have higher numbers of accompanying adults, to be confirmed with the place at the time of booking. For home educating families Education Group Membership covers up to two accompanying adults for one family group. Any further adults will be required to pay normal admission rates.

Groups admitted to a site at any one time are at the discretion of the property manager.



Please complete this form in block capitals and black ink, attach your payment and send it together with letter-headed notepaper confirming the non-profit-making status of your group to:

The National Trust Membership Department
PO Box 39, Warrington WA5 7WD
Email: enquiries@thenationaltrust.org.uk
Telephone: 0844 800 1895

Please tick to confirm that

- Your students/members are in full-time education (either with this group or elsewhere), and
- You are a non-profit-making organisation, and
- You have public liability insurance with a minimum indemnity limit of £5M and enclose evidence, or
- You are an LEA school covered by your LEA insurance

Organisation details

Name of organisation (if applicable):

LEA (if applicable):

Address:

Postcode:

Telephone Number:

Email:

Number of students/members on roll/
home educating family members:

Contact details

Dr/Mr/Mrs/Miss/Ms

Initials:

Surname:

Job Title: