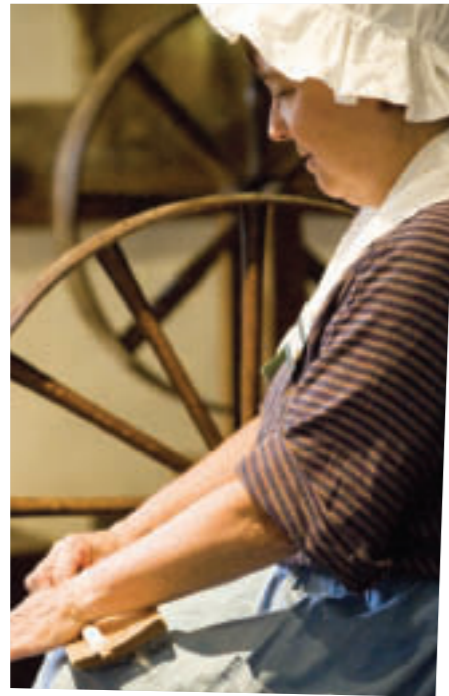


# Industrial revelations



& Styal Estate in Wilmslow. Steeped in history and atmosphere, the place is still alive with the sights, sounds and smells of the industrial revolution, from the clatter and clunk of the machinery to the hiss of the steam engines and churning of Europe's most powerful working waterwheel. Interactive displays and machine demonstrations bring the workings of the Georgian cotton mill to life, tours vividly depict the impoverished lives of the mill workers and children who, in exchange for labour, were fed, clothed, schooled and housed at The Apprentice House.



From working mills to lighthouses, foundries to steam engines and mines, the National Trust boasts a wealth of industrial treasures across a broad range of buildings, sites, machinery, installations, fixtures and fittings.

Hampshire is home to **Winchester City Mill**, a water-powered corn mill spanning the River Itchen. There has been a mill on the site here since at least the time of the Domesday survey, but the one currently standing dates back to 1743. In recent years it has been expertly restored to full working order giving groups a great opportunity to witness a traditional flour milling demonstration. To learn about the mill's medieval history and discover more about the river and its wildlife, you can enjoy 'A Working Flour Mill' tour that offers groups of up to 30 people a more in-depth introduction to both the historic and natural site. Another mill of great historical significance, providing a host of different diversions for groups of all sizes and interests, is **Quarry Bank Mill**

Over in County Tyrone, Northern Ireland at **Wellbrook Beetling Mill** you can witness linen being manufactured in the traditional way at the country's last surviving water-powered linen mill. Add the 'Spinning a Yarn' special interest tour to your visit and introduce your group to the ancient arts of scutching, hackling and weaving against a backdrop of clattering beetling engines and rushing water.



Through the ages, however, the wheels of industry were kept oiled not by manufacturing alone, but also by a flourishing mining industry.

Nowhere will you find a better example of a traditional site than at **East Pool Mine**, near Redruth, in Cornwall. Home to two Cornish Beam engines, including the largest in the country, East Pool Mine is located at the gateway of Cornwall's Mining World Heritage Site, so there are plenty of opportunities to explore further. For groups that book in advance, guided tours can be arranged.



## Destination focus: South West

Encompassing Dorset, Devon and Cornwall there is much to see and discover in this picturesque corner of Britain. Tropical gardens, ancient stone circles, beautiful houses, curious treasures, maritime history and myths all make for a host of magical days out.



### Tyntesfield, Somerset

After a huge restoration programme, **Tyntesfield's** house, chapel, gardens and woodland are fully open for business. Enjoy an inspiring day of fresh air and discovery on this extraordinary Victorian estate, just outside Bristol. The new Home Farm visitor centre boasts a new shop and restaurant serving local produce including freshly picked fruit and vegetables from the kitchen garden. Next year, one thousand items from Tyntesfield's extraordinary collection of objects will be unpacked for all to admire.

Here's an idea: if you're in the area, why not make a National Trust day of it and visit **Dyrham Park** or **Prior Park Landscape Garden**, too. Call 01275 461900, or email [tyntesfield@nationaltrust.org.uk](mailto:tyntesfield@nationaltrust.org.uk)

### Buckland Abbey, Devon

Home to Cistercian monks and seafarers Grenville and Drake, **Buckland Abbey** has transformed over the last 700 years from an abbey to a house and more recently, a partial museum. Visit beautifully furnished rooms, engage with the house's history in the interactive galleries, explore the impressive Great Barn and enjoy one of four delightful walks around the estate. The recently acquired Cider House, on a neighbouring part of the original monastic estate, provides a new opportunity to explore the surrounding 3-acre garden, featuring a vast kitchen garden and varied house gardens.

Here's an idea: be one of the first to book a bespoke group tour to visit the newly opened gardens in spring 2012. Call 01822 853607, or email [bucklandabbey@nationaltrust.org.uk](mailto:bucklandabbey@nationaltrust.org.uk)



### Cotehele, Cornwall

This very attractive Tudor house is home to a superb collection of textiles, armour and furniture with lovely surrounding gardens and riverside walks. The formal garden overlooks the richly planted valley garden with its medieval dovecote, stewpond and pretty Victorian summer-house. During 2012 and 2013 the interpretation theme will focus on the Edgcombe family who added new rooms, towers, heightened roof lines and changed windows.

Here's an idea: make the most of your visit with a special interest tour. You can discover more about the lives of the Edgcombes and the structural changes they made, enjoy a walk and talk with the head gardener or discover the spirit of Christmas at garland making time. Call 01579 351346, or email [charmain.saunders@nationaltrust.org.uk](mailto:charmain.saunders@nationaltrust.org.uk)

### Lacock Abbey, Fox Talbot Museum and Village, Wiltshire

Having taken a starring role in many period TV dramas and films, from *Cranford* to *Harry Potter*, the quaint, picturesque streets of Lacock also provide the perfect setting for a group day out. Built on the foundations of an old nunnery, the quirky abbey is a great place to start with its magnificent cloister court, medieval rooms and woodland grounds to be explored. The museum here celebrates the achievements of William Henry Fox Talbot, famous for his contributions to the invention of photography. There is also a new George Bernard Shaw photographic exhibition in the museum and you can see the stories of Lacock brought to life in the rooms at the abbey.

Here's an idea: stop for a refreshment break in **Lacock** and make it part of a wider itinerary by also visiting **Prior Park Landscape Garden**, one of the most beautiful 18th-century gardens. To contact Lacock direct, call 01249 730227, or email [lacockabbey@nationaltrust.org.uk](mailto:lacockabbey@nationaltrust.org.uk)



Photos: ©NTPL/ Andrew Butler.

For alternative formats, please contact 01793 818 540 or email: [traveltrade@nationaltrust.org.uk](mailto:traveltrade@nationaltrust.org.uk)

Registered charity no. 205846

When you have finished with this newsletter please recycle it.



# Where Next?

Issue No. 13 Autumn 2011

[www.nationaltrust.org.uk/groups](http://www.nationaltrust.org.uk/groups)

## 2012 Groups Guide out soon

Following the success of last year's new-style Groups Guide we are soon to launch the new 2012 edition and are hoping for an equally enthusiastic response from all our readers. Remaining true to the wisdom, 'if it isn't broke...', we have kept the basic style and content of the book similar to the 2011 version, but have updated the information and refreshed the look to reflect the exciting year ahead.

As well as featuring 'What's new for 2012', you'll find all the essential information you need for every property along with the special interest tours available. In fact, just about everything you need to plan your itineraries all year round, wherever you are.

To make sure you get off to a head start with your planning for next year, pre-book your copy of the 2012 Groups Guide now by emailing us at

[traveltrade@nationaltrust.org.uk](mailto:traveltrade@nationaltrust.org.uk) with your name, organisation and contact details.



## The winning team

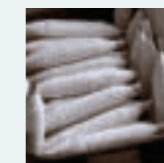


We would like to sincerely thank all of the Group Travel Organiser readers who voted for us at the 2011 Group Travel Awards. We are delighted to have picked up the award for the 'Best Information Product for Groups' for our 2010 Groups Guide and are especially pleased that we are providing you with something that you find really helpful. Here's to 2012!

### At a glance

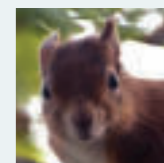
#### Industrial revelations

From mills to mines, discover what kept Britain working.



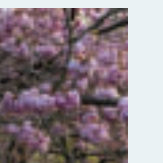
#### Where the wild things are

Take a walk through some of our most amazing natural habitats.



#### Top 10 spring gardens

Enjoy being outside - it's blooming lovely in spring.



Photos: ©NTPL/ Ian Shaw, Andreas von Einsiedel, John Bethell.

Photos: ©NTPL/ Ian Shaw, John Millar, Val Corbett.

# What's new

Events and stories from around the country



## Cheshire

**Little Moreton Hall:** new visitor facilities, including a larger shop located on the car park and extended catering facilities, will be opening in 2012. A great addition to the quirky moated hall and its charming gardens. Ask about our free guided 'Tudor Life' tours. Call 01260 272018, email [littlemoretonhall@nationaltrust.org.uk](mailto:littlemoretonhall@nationaltrust.org.uk)

## County Londonderry, Northern Ireland

**Springhill:** step aboard for a journey of discovery as the story of the Lenox-Conyngham family and their connection with the ill-fated *Titanic* is revealed. Groups can also take the Titanic Trail that incorporates both Springhill and The Argory, charting the houses' nautical heritage and links to the famously doomed ship. Cream teas are included! Call 028 8674 8210, email [springhill@nationaltrust.org.uk](mailto:springhill@nationaltrust.org.uk)

## Derbyshire

**Hardwick Hall:** the Stable Yard buildings are undergoing a huge transformation and will be re-opened in spring 2012 with a new visitor centre, providing inspiration for your visit to the Hardwick Estate and the surrounding area. The South Range has also been transformed into a new shop and restaurant catering for visitors 364 days a year. Call 01246 850430/01246 858400, email [hardwickhall@nationaltrust.org.uk](mailto:hardwickhall@nationaltrust.org.uk)

## Norfolk

**Sheringham Park:** Humphrey Repton described Sheringham Park as 'his most favourite work' and 2012 will see the bicentenary of this landscape designer's Red Book. Call 01263 820550, email [sheringhampark@nationaltrust.org.uk](mailto:sheringhampark@nationaltrust.org.uk)

## North Yorkshire

**Nunnington Hall:** this beautiful Yorkshire house, nestling alongside the River Rye, will be the first to host the world premier of an exhibition of Patrick Lichfield Polaroid boards from his studios. The exhibition will then go on tour, showing at two other National Trust properties, Mottisfont and Quarry Bank Mill. See website for details. Call 01439 748283, email [nunningtonhall@nationaltrust.org.uk](mailto:nunningtonhall@nationaltrust.org.uk)

## Pembrokeshire

**Colby Woodland Garden:** large areas of the meadow have been reseeded with wildflowers, there's a new snowdrop walk to explore and in the West Wood, areas have been exposed for bluebells to provide natural displays with a genuine wow factor in 2012. Call 01834 811885, email [steve.whitehead@nationaltrust.org.uk](mailto:steve.whitehead@nationaltrust.org.uk)

## Suffolk

**Ickworth:** 2012 will see the completion of the basement project, an intricate and fascinating maze of servants' quarters bringing to life the below stairs culture and atmosphere of this exquisite country house in years gone by. Call 01284 736122, email [jenny.troll@nationaltrust.org.uk](mailto:jenny.troll@nationaltrust.org.uk)



Photos: ©NTPL/ Jerry Harpur; Andrew Butler.

# Where the wild things are

When planning your itineraries for next year it's worth remembering that the National Trust offers a wealth of natural treasures as well as historic ones. The majority of our magnificent landscapes are not just pretty to look at and explore, they provide important habitats for a host of native flora and fauna.



Red squirrel at Brownsea Island, Dorset

One of our most significant wild habitats is **Wicken Fen National Nature Reserve** in Cambridgeshire. As one of Europe's most important wetlands it supports an abundance of wildlife, birdlife, plant and insect species, from hen harriers and bittern to water voles and butterfly. A raised boardwalk makes it easy to explore the

terrain where you'll discover flowering meadows, sedge and reedbeds, lush grasses, grazing herds of Highland cattle and wild Konik ponies. Choose from a range of special interest tours to learn more about how these unique wetlands are being managed and conserved to protect them forever. The **Murlough National Nature Reserve**, Ireland's first Nature Reserve, is a real must for nature lovers. The fragile 6,000 year old sand dune landscape is overlooked by the atmospheric Mountains of Mourne and provides access to one of Northern Ireland's most popular beaches. Murlough offers visitors the opportunity to watch the wild birds and seals of Dundrum's bays in the wintertime and wander amongst beautiful flowers and butterflies during the summer months. Guided tours are available for groups and can be tailored to your individual needs.

If you're visiting the south of England, **Brownsea Island** in Dorset is a peaceful oasis and wildlife haven in the picturesque setting of Poole Harbour. Introduce your group to the delights of this very special place with our 'A Walk on the Wild Side' guided walk and talk. As you make your way around the woodland, heathland, wetland



Wicken Fen, Cambridgeshire

Wild Konik ponies at Wicken Fen, Cambridgeshire



and shoreline areas, you will discover more about some of the rare breeds that make it their home, including red squirrels, breeding common and sandwich terns, dragonfly, butterflies and the largest winter population of avocets in the UK. There are more wildlife spotting opportunities to be had, this time of the marine variety, on the stunning Ceredigion coastline in Wales. Combine a visit to the impressive 18th-century country estate, **Llanerchaeron**, Mwnt, with a trip to the National Trust beaches at Mwnt and Penbryn, perfect locations for spotting dolphins, seals and porpoises in the wild. If you'd like to know more about any of these places, or wish to find out about other places visit [www.nationaltrust.org.uk/groups](http://www.nationaltrust.org.uk/groups)



Deer at Brownsea Island, Dorset

Murlough NNR and the Mourne Mountains, County Down



# Top 10: Spring Gardens



Photos: ©NTPL/ John Millar; Joe Cornish; Paul Harris; Joe Cornish; David Levenson; Jerry Harpur.

## Nymans, West Sussex

A creatively designed gardener's paradise boasting bluebells, daffodils and early spring bulbs, followed by azaleas in later spring.

## Sizergh Castle and Garden, Cumbria

A great stop-off point when visiting the Lake District, the garden has a beautiful lake, herbaceous borders and a superb rock garden.

## Bodnant Garden, Wales

One of the world's most spectacular gardens, situated above the River Conwy, with stunning views across Snowdonia.

## East Riddlesden Hall, Yorkshire

The lovely gardens here boast a fragrant herb garden and changing carpet of colour throughout the year, with spring promising a particularly colourful spread.

## Cotehele, Cornwall

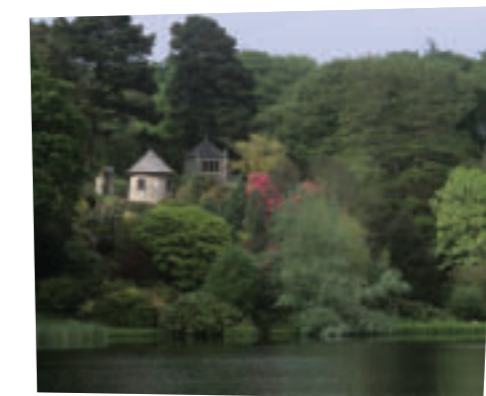
A spectacular display of daffodils plus additional crocus and tulips planted on the terraces for 2012. First apple blossom ever in the new Mother orchard.

## Lyveden New Bield, Northamptonshire

The orchard is planted with period varieties of apple, pear, cherry, plum and walnut trees all in blossom during the springtime.

## Mount Stewart House, Garden and Temple of the Winds, County Down

One of our most unique and unusual gardens, it showcases a magnificent display of colour in spring in both the formal and informal gardens.



## Wimpole Estate, Cambridgeshire

The walled garden is bursting with seasonal produce and beautiful herbaceous borders. Impressive displays of tulips in spring.

## Belton House, Lincolnshire

Enjoy early February snowdrops sprinkled with yellow aconites, daffodils, primroses and blue scilla in March and April. Visitors will also witness a glorious carpet of bluebells in May.

## Sissinghurst Castle, Kent

Explore a garden of 'rooms' in the ruin of an Elizabethan house, set amongst pretty woods and streams.