



East of England

**National
Trust**

Groups Guide 2012

**Great days out
in the East of England**

2012

Where to go in the East of England

Contents

- EE 5 Anglesey Abbey, Gardens and Lode Mill
- EE 6 Blickling Estate
- EE 7 Felbrigg Hall, Gardens and Estate
- EE 8 Flatford: Bridge Cottage
- EE 9 Ickworth
- EE 10 Lavenham Guildhall
- EE 11 Melford Hall
- EE 12 Oxburgh Hall
- EE 14 Peckover House and Garden
- EE 16 Sutton Hoo
- EE 17 Wicken Fen National Nature Reserve
- EE 18 Wimpole Estate

- Places with limited availability**
- EE 19 Coggeshall Grange Barn
- EE 19 Dunstable Downs, Chilterns Gateway Centre and Whipsnade Estate
- EE 19 Dunwich Heath: Coastal Centre and Beach
- EE 20 Elizabethan House Museum
- EE 20 Hatfield Forest
- EE 20 Houghton Mill
- EE 20 Orford Ness National Nature Reserve
- EE 20 Paycocke's
- EE 20 Shaw's Corner
- EE 21 Sheringham Park
- EE 21 The Textile Conservation Studio
- EE 21 Theatre Royal, Bury St Edmunds
- EE 22 Gardens in the East of England

Country estates with glorious houses at their heart, beautifully manicured gardens, wild landscapes and internationally important nature reserves – all with a story to tell. Head east and you'll discover sweeping scenery, which will add a sense of drama when you first see Ickworth's imposing Rotunda, the eerie burial mounds at Sutton Hoo and the ancient fenland at Wicken Fen.

What's new for 2012?

Sutton Hoo, Suffolk

'The King is Dead' – visitors can now walk inside the reconstructed burial chamber of King Raedwald and experience what it must have been like on the night a nation buried a king.

Ickworth, Suffolk

The builders have left and the servants' quarters and kitchens below the imposing Rotunda reopen in 2012; there is a maze of corridors and rooms in this extensive underground space. Experience what it would have been like for those who worked and lived on the estate a century ago and discover their real life stories.

Melford Hall, Suffolk

It's easy to get a sense of a family home when visiting Melford. Devastated by fire 70 years ago this year, the house was nurtured back to life by the Hyde Parker family and it remains their much-loved home today. Melford Hall has seen a number of significant changes recently, with a new visitor reception and tea-room. Groups can even take tea in the parlour!

Felbrigg Hall, Gardens and Estate, Norfolk

The team have been busy working on bringing rooms in the house to life – the Dining Room is prepared and the table laid for an 1860s dinner party, and the kitchen is at the ready too – you can imagine the preparation for such a feast. A bountiful estate, Felbrigg lives up to its name, with its decorative and productive walled garden; a feast for the eyes (and the stomach too).

Anglesey Abbey, Gardens and Lode Mill, Cambridgeshire

Explore part of the domestic wing, open for the first time so that visitors can see the 1930s kitchen as it was left to us by Lord Fairhaven.



Front cover: Oxburgh Hall. Places clockwise from top left: Rotunda and Italianate Garden at Ickworth; volunteer deadheading red dahlias at Anglesey Abbey, Gardens and Lode Mill; spiced carrot soup; south front of Blickling Hall; Dining Room at Felbrigg Hall, Gardens and Estate; and rose (Madame Isaac Pereire) at Peckover House and Garden.

Great for lunch

Anglesey Abbey, Gardens and Lode Mill, Cambridgeshire
The light and spacious restaurant with enormous glass windows is perfect for group visits, with a great choice of food. The flour is milled on the estate at Lode Mill and goes straight into the kitchen for baking cakes, bread and pastries.

Felbrigg Hall, Gardens and Estate, Norfolk
It's worth popping into the delightful kitchen garden on the way up to the house, as you'll see what's in season and likely to be on offer for lunch. Don't miss the wonderfully herby salad! We aim to source as much food as possible within four miles of the estate.

Wimpole Hall, Cambridgeshire
Enjoy rare-breed meat from Wimpole Home Farm in their newly renovated restaurant.

★ Top tours

A Stitch in Time at The Textile Conservation Studio
This is a chance to step inside the National Trust's only conservation treatment facility in the country. Take a really close look at the challenges involved in the intricate conservation work required for historic textiles, with the chance to meet the professional team behind bringing these items back to life.

The Visionary's Garden at Anglesey Abbey, Gardens and Lode Mill
Get to know all about our garden through the eyes of those who know every plant, in every nook and cranny – a tour with our own gardeners. Discover some of the seasonal highlights and the wonderful stories about the creation of this garden and the continued care it receives today.

The Edith Pretty Tour at Sutton Hoo
Join our guides for a tour of Sutton Hoo, focusing on the life of Edith Pretty, who instigated the archaeological dig that unearthed the fabulous Anglo-Saxon treasure and donated it to the nation.

"We received a very warm welcome from your staff, and in each room in the house the guides were very knowledgeable and a great asset to the National Trust."

Ms E Kurn, Englemere DFAS, at Melford Hall



Places from top: Wimpole Estate; visitors sitting outside the Carriage House Restaurant at Felbrigg Hall, Gardens and Estate; and visitors in Tranmer House, Sutton Hoo.

How to book

To make a booking please get in touch directly with the place you have in mind. Visits and catering requirements must be booked and confirmed in writing, and we recommend you do this well in advance. Also please check cancellation terms with your contact at the time of booking, as charges may otherwise still apply. More information is available at www.nationaltrust.org.uk/groups

Group discounts apply to groups of 15 or more unless otherwise stated. Prices shown include this discount where it applies.

Special interest tours, introductory talks/coach welcome
If you're interested, please request these at the time of booking, as they will be subject to availability and additional charges may also apply.

Key to symbols

★ Special interest tours

If you'd like to offer your group something with a particular focus, look out for this symbol

🌿 Garden best in...

This gives you an indication of when you'll see the garden at its very best

🎬 Movie moment

Look out for this symbol to see what was filmed at our places

Features

- 🏠 Historic house
- 🏰 Castle
- 🏛️ Archaeological site
- 🏭 Industrial heritage
- 🌿 Garden
- 🌳 Park
- 🍺 Public House
- 🗺️ Guided tours
- 🎧 Audio guide
- 📅 Events
- 🛍️ Shop
- ☕ Refreshments
- 🍽️ Suitable for picnics
- 📄 Available for functions

£ Additional charges apply

Catering facilities and attractions listed in *italics* are not run by the National Trust

Access for all

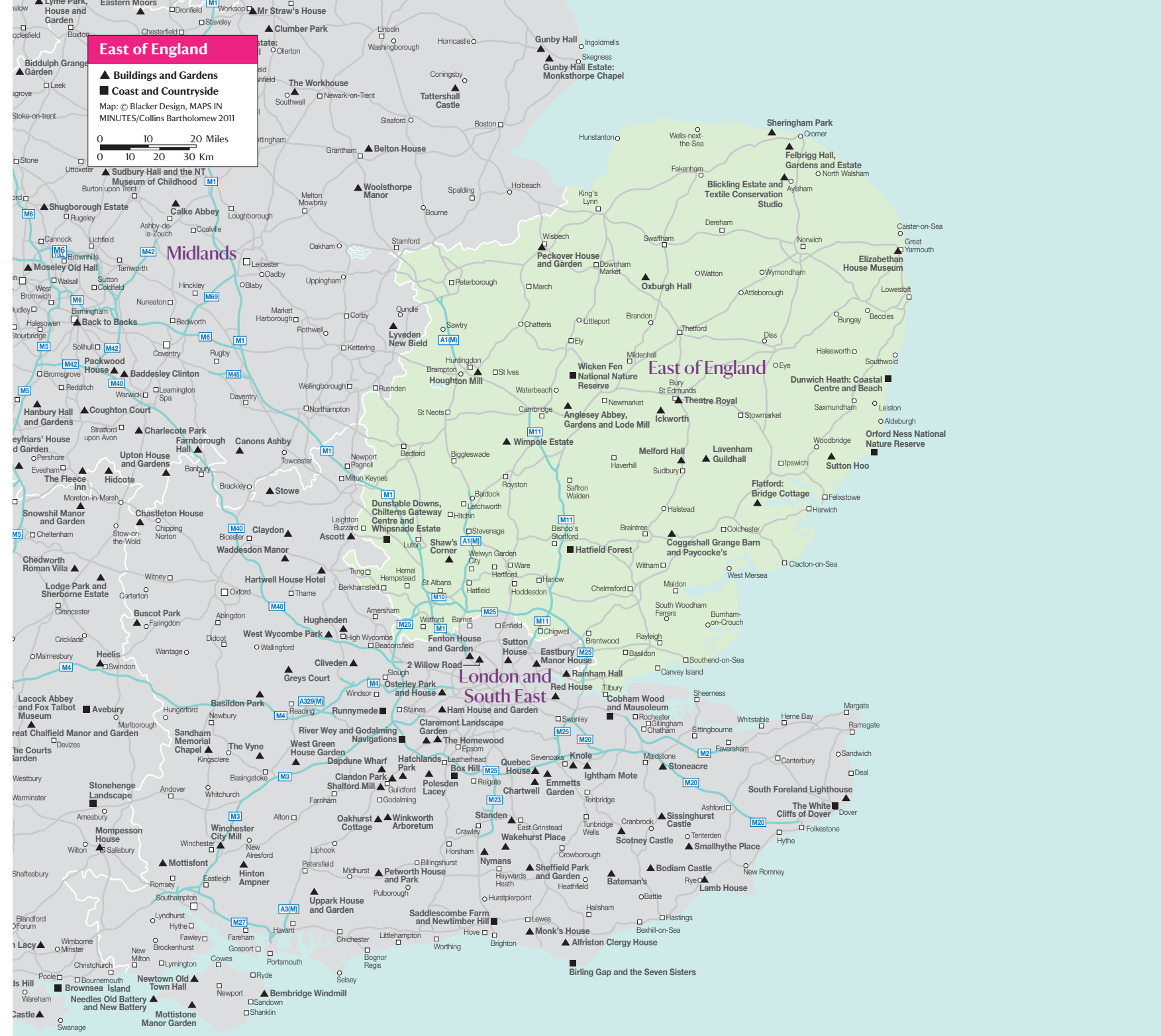
- 🅇 Designated parking
- 🅇 Drop-off point
- ♿ Transfer available
- ♿ Accessible Toilet
- ♿ Catering accessible
- ♿ Shop accessible
- ♿ Induction loop
- 📷 Photographic album
- 📺 Virtual tour
- ♿ Seats/seating available
- ♿ Braille (guide or menu)
- ♿ Large print (guide or menu)
- ♿ Steps/uneven terrain
- ♿ Ramped access or slopes
- ♿ Level access/terrain, paths
- ♿ Lifts
- ♿ Stairclimber
- ♿ Stairlift
- ♿ Wheelchairs available
- ♿ Accessible route and/or map available
- ♿ Powered mobility vehicle available

East of England

- ▲ Buildings and Gardens
- Coast and Countryside

Map: © Blacker Design, MAPS IN MINUTES/Collins Bartholomew 2011

0 10 20 Miles
0 10 20 30 Km



Midlands

East of England

London and South East

Anglesey Abbey, Gardens and Lode Mill

Cambridge, Cambridgeshire



Peel back the years to the golden age of English country house living and enjoy some 1930s luxury – for a few hours at least. Discover a treasure trove of sumptuous furnishings, fine books, paintings, silver and rare clocks. Outside, there are 114 acres of rolling lawns, sweeping avenues, formal gardens, wildlife habitats, classical statuary – and a working watermill. There is colour and fragrance throughout the seasons in a relaxing setting. **Note:** groups limited to five per day, Monday to Sunday (no groups on Bank Holidays).



Contact

Heather Bowers, Administrator
T 01223 810081 F 01223 810088
E heather.bowers@nationaltrust.org.uk

Location

Anglesey Abbey, Gardens and Lode Mill,
Quy Road, Lode, Cambridge, Cambridgeshire
CB25 9EJ. 6 miles north-east of Cambridge
on B1102. Signposted from A14, junction 35.

Coaches

Coach parking, 50 yards. Maximum five
coaches per day, Monday to Sunday.

Visit

Average length of visit: 3 hours. On-board coach
welcome.

Catering

Redwoods Restaurant (licensed), self-service,
160 covers. Serving traditional Cambridgeshire
dishes, using seasonal produce sourced locally.
Booked menu for groups, up to 40 covers in
Robinson Room.

Attractions nearby

Cambridge, Ely, Houghton Mill, Ickworth,
Newmarket, Wicken Fen National Nature Reserve,
Wimpole Estate, Wimpole Home Farm.



Group admission

£9.35. Garden and mill only £5.55

Anglesey Abbey		M	T	W	T	F	S	S
Garden, restaurant, shop and plant centre								
1 Jan–11 Mar	10:30–4:30	M	T	W	T	F	S	S
12 Mar–28 Oct	10:30–5:30	M	T	W	T	F	S	S
29 Oct–31 Dec	10:30–4:30	M	T	W	T	F	S	S
House								
14 Mar–28 Oct	11–5	.	.	W	T	F	S	S
31 Oct–4 Nov	11–3:30	.	.	W	T	F	S	S
House (guided tours only)								
12 Mar–30 Oct	12–3	M	T
5 Nov–31 Dec	12–3	M	T	W	T	F	S	S
Lode Mill								
1 Jan–11 Mar	11–3:30	.	.	W	T	F	S	S
14 Mar–28 Oct	11–4	.	.	W	T	F	S	S
31 Oct–30 Dec	11–3:30	.	.	W	T	F	S	S

House: open completely on Bank Holiday Mondays. Spaces limited on guided tours. Property closed 24 to 26 December. Some areas of the garden may be closed due to season. Snowdrop season: 23 January to 26 February.

Access for all



Special interest tours

★ The Sculptures

Discover one of the National Trust's finest collections of garden statuary. Join one of our expert guides to unearth fascinating stories about this impressive collection. Between 1926 and 1966, Lord Fairhaven and his brother bought over 100 pieces, which are now set against the backdrop of Anglesey Abbey's stunning gardens. Groups can choose one of three different areas – the Emperors' Walk and arboretum, the herbaceous border and around the house, or Coronation and Cross Avenues.

Tour cost	£3
Group size	15 – 25
Availability	April to October, Monday to Friday, during normal opening hours
Duration	1 hour 30 minutes



★ The Visionary's Garden

Get to know the garden through the eyes of our gardeners. Discover some of the seasonal highlights and wonderful stories about the creation of the garden and the continued care it receives today. Soak up the fresh air, wonderful sights and scents on this enjoyable walking tour.

Tour cost	£3
Group size	15 – 25
Availability	All year, Monday to Friday, during normal opening hours
Duration	1 hour 30 minutes

If you like this, you may also enjoy...

the Gothic remains of Mottisfont in Hampshire (London and South East)

Blickling Estate

Norwich, Norfolk



One of England's great Jacobean houses, Blickling is famed for its spectacular Long Gallery, superb plasterwork ceilings and fine collections of furniture, pictures, books and tapestries. Period live interpretation in the house on selected days. The gardens are full of colour throughout the year and the extensive parkland features a series of beautiful woodland and lakeside walks.



Garden best all year

Contact

Kelly Myhill, Administration Assistant
T 01263 738030
E kelly.myhill@nationaltrust.org.uk

Location

Blickling Estate, Blickling, Norwich, Norfolk NR11 6NF. 1½ miles north-west of Aylsham on B1354. Signposted off A140 Norwich (15 miles north) to Cromer (10 miles south) road.

Coaches

Drop-off point 75 yards from entrance.
Coach parking 100 yards.

Visit

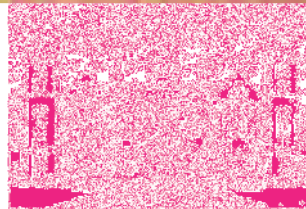
Average length of visit: 3 hours 30 minutes.
Introductory talk[£]. Out of hours tours[£].

Catering

Restaurant and Courtyard Café serving local seasonal produce (licensed), assisted service, 80 covers. Functions catered for in private suite of rooms.

Attractions nearby

Felbrigg Hall, Gardens and Estate, *Market Towns of Aylsham and Holt, Norwich*, Sheringham Park, *The Broads*.



Group admission

£9.95. Garden only £6.80

Blickling Estate		M	T	W	T	F	S	S
House								
11 Feb–4 Nov	11–5	M	T	W	T	F	S	S
Garden, shop, restaurant and bookshop								
5 Jan–10 Feb	11–4					T	F	S
11 Feb–4 Nov	10–5:30	M	T	W	T	F	S	S
7 Nov–30 Dec	11–4			W	T	F	S	S
Plant centre								
10 Mar–4 Nov	11–5:30	M	T	W	T	F	S	S
Cycle hire								
31 Mar–4 Nov	10–4						S	S
Park								
Open all year	Dawn–dusk	M	T	W	T	F	S	S

On quiet days hall open for guided tours only at 12, 1, 2 and 3 (other days guided tour available 10:45) – spaces limited to 12, telephone for details. 1 January to 10 February: Hobarts Restaurant closed; Estate Barn café open seven days a week. Cycle hire available daily during local school holidays. Closed 25 and 26 December.

Access for all



Building Grounds

Special interest tours

★ Exploring the Blickling Estate

Depending on your group's particular area of interest, you can choose from a number of informative guided tours covering a range of different topics. From the history of the great Jacobean estate and the wildlife that inhabits the vast parkland, to more specific subjects such as bluebells or fungi, our experienced guides promise a lively and entertaining tour.

Tour cost	£5. Call for details
Group size	12 – 30
Availability	Any time of the year. Call to discuss your requirements. 4 weeks' notice required
Duration	1 hour 30 minutes

★ Inside Blickling Hall

Get the inside story on Blickling Hall and its history as you tour the grand show rooms and servants' quarters in the company of one of our expert guides. In one of England's great Jacobean houses, you can expect a fascinating family history, a fine collection of furniture and paintings spanning the centuries, some marvellous Mortlake tapestries and one of the finest collections of rare books in England. Bespoke tours available, please call to discuss your group's particular requirements.

Tour cost	£15.80
Group size	12 – 30
Availability	28 February to 1 November: Wednesday to Friday, 10:15, before house opens to public. 6 weeks' notice required
Duration	1 hour 30 minutes

★ The Guided Garden Tour

Enjoy exploring the glorious garden at Blickling with one of our knowledgeable garden guides. You'll gain a fascinating insight into the garden's history and planting schemes as you take a look around the parterre, 18th-century orangery, secret garden and delightful woodland dell. Tours can be tailored to your group's particular interests.

Tour cost	£12 (out of hours: £12). Members £6.50
Group size	12 – 50
Availability	28 February to 1 November: Wednesday to Sunday, start time can be tailored to suit. 4 weeks' notice required
Duration	1 hour 30 minutes

Felbrigg Hall, Gardens and Estate

Norwich, Norfolk



This 17th-century country house contains original 18th-century furniture and one of the largest collections of Grand Tour paintings by a single artist. The walled garden has been restored and features a series of allotment gardens and a working dovecote. The rolling landscape park is well known for its magnificent veteran trees and woodland pasture.



Garden best in May-September

Contact

Fiona Lilley, Visitor Services Manager
T 01263 837444 F 01263 837032
E felbrigg@nationaltrust.org.uk

Location

Felbrigg Hall, Gardens and Estate, Felbrigg, Norwich, Norfolk NR11 8PR. Near Felbrigg village, 2 miles south-west of Cromer; entrance off B1436, signposted from A148 and A140.

Coaches

Coach parking 75 yards from reception. Maximum two coaches per day. Sat Navs give poor directions, please follow brown signs.

Visit

Average length of visit: 2 hours. Out of hours tours[£].

Catering

Carriages Brasserie (licensed), 40 covers. Turret tea-room (licensed), self-service, 60 covers. Booking advisable for Brasserie. Set menu, private room available. Catering requirements should be discussed direct with the catering manager on 01263 838237. All dietary needs catered for.

Attractions nearby

Blickling Estate, *Cromer Museum*, *Henry Blogg Museum*, *North Norfolk Railway*, Oxburgh Hall, Sheringham Park.



Group admission

£8.20. Garden only £3.80

Felbrigg Hall		M	T	W	T	F	S	S
House and bookshop								
3 Mar-4 Nov	11-5	M	T	W	.	.	S	S
19 Jul-31 Aug	11-5	M	T	W	T	F	S	S
Refreshments, shop and bookshop								
1 Jan-26 Feb	11-3	S	S
Gardens, refreshments and shop								
3 Mar-31 Oct	11-5	M	T	W	T	F	S	S
8 Nov-30 Dec	11-3	.	.	.	T	F	S	S
Parkland								
Open all year	Dawn-dusk	M	T	W	T	F	S	S

Open Good Friday 11 to 5. 19 July to 31 August. There may be limited access to some areas of the house on Thursday and Friday.

Access for all



Shop and catering Grounds

Special interest tours

★ A Gardener's Delight

Enjoy a tour around the 18th-century walled garden with one of our passionate gardeners on hand to give you an informed guide to this plantsman's delight. Discover the working dovecote, the vegetable plot, herb border and old varieties of espaliered fruit trees, best seen between May and August, or join us in September to see the National Collection of autumn crocus in bloom.

Tour cost	£5.50. Minimum group charge for garden tour is £82.50
Group size	15 - 40
Availability	28 February to 1 November: Monday to Wednesday
Duration	1 hour

★ The Grand Tour

Sumptuous settings, tremendous treasures and fabulous 18th-century furniture all go to make this exclusive guided tour of Felbrigg Hall a truly fascinating one. Find out all about the beautiful contents within, and the families and characters who have lived here over the centuries, including William Windham II, famed for his lavish interior tastes and treasures gathered on the Grand Tour. A feast for the eyes.

Tour cost	£11. Minimum group charge for house tours is £165
Group size	24 - 48
Availability	4 April to 1 November: Saturday to Wednesday, 9:30 before hall opens to the public
Duration	1 hour 30 minutes

Ickworth

Bury St Edmunds, Suffolk



Ickworth House stands in idyllic parkland, with stunning gardens, a vineyard, canal, lake and woodland walks. The huge central Rotunda dates from 1795 and houses collections of Old Master paintings, silver and Regency furniture collected by the infamous and eccentric Hervey family. In the newly restored basement, the lives of the servants are revealed with an insight of the work required to service this grand property. **Note:** there are excellent facilities in the West Wing including a shop and restaurant, and a plant and garden shop near the car park.



Garden best all year

Contact

Jenny Troll, Property Secretary T 01284 736122
E ickworth@nationaltrust.org.uk

Location

Ickworth, The Rotunda, Horringer, Bury St Edmunds, Suffolk IP29 5QE. 3 miles south-west of Bury St Edmunds on west side of A143 (take Junction 42 off the A14 towards Westley).

Coaches

Drop-off point 6 yards from entrance.
Coach parking 200 yards from entrance.

Visit

Average length of visit: 2 hours. On-board coach welcome. Guided tour^f.

Catering

The West Wing houses a 100-seater licensed restaurant serving hot and cold meals, and Ickworth wines. Morning, lunch and afternoon seasonal menus. Kiosk in car park.

Attractions nearby

Abbey Gardens, *Anglesey Abbey*, *Gardens and Lode Mill*, *Greene King Brewery*, *Lavenham Guildhall*, *Manor House Museum*, *Melford Hall*, *Theatre Royal*, *Bury St Edmunds*, *West Stow Country Park*.



Group admission

£9.50

Ickworth		M	T	W	T	F	S	S
Parkland, woods and children's playground								
Open all year	8-8	M	T	W	T	F	S	S
Gardens								
Open all year	8-5	M	T	W	T	F	S	S
Rotunda (house and basement)								
2 Mar-22 Jul	11-5	M	T	.	.	F	S	S
23 Jul-2 Sep	11-5	M	T	W	T	F	S	S
3 Sep-2 Nov	11-5	M	T	.	.	F	S	S
3 Nov-16 Dec	11-3	S	S
Plant and garden shop								
1 Mar-4 Nov	11-5	M	T	W	T	F	S	S
Shop, restaurant* and West Wing reception								
1 Jan-29 Feb	11-4	M	T	W	T	F	S	S
1 Mar-2 Nov	10-5	M	T	W	T	F	S	S
3 Nov-31 Dec	11-4	M	T	W	T	F	S	S

Open all Bank Holidays except 25 December. *Limited catering available 24 and 26 December. Parkland, woods and gardens close 8 or dusk if earlier. Last entry to Rotunda is 60 minutes before closing.

Access for all



House West Wing

Grounds

Special interest tours

★ A Guided Tour of the Parkland

Enjoy an insightful tour around the impressive Italianate garden and 'Capability' Brown inspired park surrounding the eccentric Suffolk house of Ickworth. Boasting pretty woodland walks, a vineyard, a fine Georgian summer-house, church, canal and lake... there is no end of delightful distractions and fascinating stories to keep you amused.

Tour cost	By arrangement
Group size	Max 30
Availability	Please call 01284 735270 for further details
Duration	1 hour

★ Pages of History

Ickworth's huge central Rotunda, flanked by two massive wings, offers an eccentric stately home to a diverse library spanning over 400 years of Hervey family reading. Join the house manager on a tour of the library to discover more about the books themselves and the stories behind those who acquired them.

Tour cost	By arrangement
Group size	8 - 15
Availability	Please call 01284 735270 for further details
Duration	1 hour 30 minutes



If you like this, you may also enjoy...

the extensive collection of the finest-quality silver at Erddig in Clwyd (Wales)

Lavenham Guildhall

Sudbury, Suffolk



This early 16th-century timber-framed building dominates Market Place in the town centre. Inside are exhibitions on timber-framed buildings, local history, farming and industry, as well as the story of the medieval woollen cloth trade. There is also an attractive walled garden with dye plants, and a 19th-century lock-up and mortuary. Lavenham's other interesting shops, galleries, pubs and restaurants are all within walking distance making the village an ideal destination for groups.

Contact

Jane Gosling, Guildhall Manager
 T 01787 247646 F 01787 246345
 E lavenhamguildhall@nationaltrust.org.uk

Location

Lavenham Guildhall, Market Place, Lavenham, Sudbury, Suffolk CO10 9QZ.

Coaches

No coach parking. Nearest parking: main village car park, Church Street, 600 yards. Groups can be dropped outside Swan Hotel, 200 yards.

Visit

Average length of visit: 1 hour 30 minutes.
 Introductory talk[£]. Out of hours tours[£].

Catering

Tea-room with assisted service, 45 covers, serving light lunches and homemade produce. Groups can reserve tables for morning coffee.

Attractions nearby

Coggeshall Grange Barn, Flatford: Bridge Cottage, Ickworth, *Kentwell Hall*, *Lavenham Church*, *Little Hall*, Melford Hall, Paycocke's, Theatre Royal, Bury St Edmunds.

Group admission

£3.95

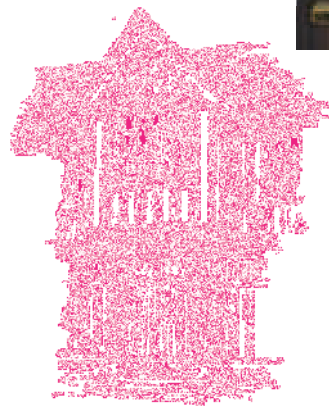
Lavenham Guildhall	M	T	W	T	F	S	S
Shop							
7 Jan–26 Feb	11–4	S	S
1 Nov–23 Dec	11–4	.	.	.	T	F	S
Tea-room							
1 Dec–23 Dec	11–4	S	S
Guildhall, tea-room and shop							
3 Mar–25 Mar	11–4	.	.	W	T	F	S
26 Mar–31 Oct	11–5	M	T	W	T	F	S
3 Nov–25 Nov	11–4	S	S

Parts of the Guildhall may be closed occasionally for community use.

Access for all

Guildhall and garden

Shop Tea-room



Special interest tours

★ A Walk Around Lavenham

A chance to explore this remarkably well-preserved Tudor village in the company of a qualified Blue Badge guide. Discover streets of timber-framed buildings as you walk around the historic centre and learn about the woollen-cloth industry that turned Lavenham into one of the richest towns in the country during the 15th and early 16th centuries. A wealth of history around every corner. Groups can end their tour with a visit to the church of St Peter and Paul, one of the finest in East Anglia.

Tour cost £3.50 (out of hours: £3.50)

Group size 15 – 50

Availability March to November: by arrangement
 (out of hours: by arrangement)

Duration 1 hour 15 minutes



Movie moment

Harry Potter and the Deathly Hallows (2010)

Melford Hall

Sudbury, Suffolk



The picturesque turrets of Melford Hall have dominated Long Melford's village green for centuries. Devastated by fire in 1942, the house was brought back to life by the Hyde Parker family and it remains their much-loved family home to this day. Their interior decoration and furnishings chart the changing tastes and fashions of two centuries, but it is the stories of family life at Melford that make this house more than just bricks and mortar.

Garden best in June-July

Contact

House Manager T 01787 379228
E melford@nationaltrust.org.uk

Location

Melford Hall, Long Melford, Sudbury, Suffolk CO10 9AA. Off A134, 14 miles south of Bury St Edmunds, 3 miles north of Sudbury.

Coaches

Coach parking in car park 100 yards north of the main Gatehouse entrance. Drop-off point at house. Two coaches per day.

Visit

Average length of visit: 2 hours 30 minutes.
On-board coach welcome. Introductory talk.

Catering

Drinks, sandwiches and light refreshments are available in small tea-room.

Attractions nearby

Flatford: Bridge Cottage, *Gainsborough's House*, *Holy Trinity Church*, Ickworth, *Kentwell Hall*, Lavenham Guildhall, Theatre Royal, Bury St Edmunds.



Group admission

House and garden £6

Melford Hall		M	T	W	T	F	S	S
31 Mar-8 Apr	1-5	S	S
9 Apr-15 Apr	1-5	M	.	W	T	F	S	S
21 Apr-29 Apr	1-5	S	S
2 May-30 Sep	1-5	.	.	W	T	F	S	S
6 Oct-28 Oct	1-5	S	S

Also open on Bank Holiday Monday and Bank Holiday Tuesday afternoons. Closed Good Friday.

Access for all



Building Grounds

Special interest tours

★ A Brief History of Melford Hall

Melford Hall is a house of stories. This introduction will help you learn more about Melford's transformation from hunting lodge to a wonderful family home for the Hyde Parkers. Hear all about its dramatic devastation in both 1642 and 1942, as well as how it has been host to both Queen Elizabeth I and Beatrix Potter.

Group size	15 - 45
Availability	During normal opening times: April and October, weekends only; May to September, Wednesday to Sunday
Duration	15 minutes

★ Hidden Gems of Long Melford

Join our Blue Badge guide for an engaging walk around lovely Long Melford, a beautifully unspoilt medieval village, bustling with life and atmosphere. Home to Melford Hall, one of East Anglia's finest Tudor mansions, and the exquisite Holy Trinity Church, the mile-long, picture-postcard village is the perfect place for sightseeing followed by a spot of shopping in some of the fabulous shops, art galleries and designer boutiques.

Tour cost	£3.75
Group size	15 - 25
Availability	During normal opening times: April and October, weekends only; May to September, Wednesday to Sunday
Duration	1 hour 20 minutes

★ Tailor-made Tours

There is much to admire at the mellow red-brick Tudor mansion that is Melford Hall. Tours can be designed to suit your group's particular area of interest. The elegant Elizabethan banqueting house has Regency, Georgian and Victorian rooms for lovers of period interiors; a proud nautical family history for those with an interest in naval battles; and an ancient deer-park, extensive parkland and Edwardian-style gardens for lovers of the great outdoors.

Tour cost	£2
Group size	15 - 30
Availability	During normal opening times: April and October, weekends only; May to September, Wednesday to Sunday
Duration	30 minutes

If you like this, you may also enjoy...

nearby Lavenham Guildhall - another example of Tudor wealth but on a different scale

Oxburgh Hall

near Swaffham, Norfolk



This moated manor house, with its Tudor gatehouse and accessible priest's hole, was built in 1482 by the Bedingfeld family, who still live here. The rooms show the development from medieval austerity to Victorian comfort and include a display of embroidery by Mary, Queen of Scots and Bess of Hardwick. The attractive gardens feature a French parterre, walled orchard and kitchen garden. **Note:** spiral staircase unsuitable for visitors with mobility limitations. Maximum of two groups per day.



Garden best in February, May–August

Contact

Kay Donachie, Property Secretary T 01366 328258
E oxburghhall@nationaltrust.org.uk

Location

Oxburgh Hall, Oxborough, near Swaffham, Norfolk PE33 9PS. 7 miles south-west of Swaffham, 3 miles from A134 at Stoke Ferry, 17 miles south of King's Lynn.

Coaches

Coach parking for 2 coaches, 20 yards from entrance. Maximum two coaches per day.

Visit

Average length of visit: 3 hours 30 minutes.
On-board coach welcome. Out of hours tours[£].

Catering

Tea-room (licensed) in Old Kitchen, assisted service, 50 covers. The Pantry (kiosk) in the car park serves light snacks. Picnic area in car park. Set menu for groups should be ordered in advance, out of hours catering available.

Attractions nearby

Castlecre Priory, Ecotech Centre, Gooderstone Water Gardens, Grimes Graves, Icen Village, Peckover House and Garden, Wicken Fen National Nature Reserve.

Group admission

£7.30. Outside normal opening hours £10. Garden only £3.80. Outside normal opening hours £6

Oxburgh Hall		M	T	W	T	F	S	S
House, garden, shop and tea-room								
25 Feb–28 Mar*	11–4	M	T	W	.	.	S	S
31 Mar–18 Apr	11–5	M	T	W	T	F	S	S
21 Apr–30 May	11–5	M	T	W	.	.	S	S
2 Jun–13 Jun	11–5	M	T	W	T	F	S	S
16 Jun–25 Jul	11–5	M	T	W	.	.	S	S
28 Jul–5 Sep	11–5	M	T	W	T	F	S	S
8 Sep–30 Sep	11–5	M	T	W	.	.	S	S
1 Oct–4 Nov*	11–4	M	T	W	.	.	S	S
Garden, shop and tea-room								
7 Jan–19 Feb	11–4	S	S
10 Nov–23 Dec	11–4	S	S

*House: 25 February to 7 March admission by timed tours only on weekdays. House, garden, shop and tea-room: open all week for October half-term (27 October to 4 November). February and March: due to essential electrical rewiring works access to parts of the house may be restricted (check in advance of visit).

Access for all



Chapel Garden



Oxburgh Hall Continued



Special interest tours

★ 500 Years in an Hour and a Half

Take a trip back through the ages of this magnificent moated manor house, home to the Bedingfeld family since 1482. Let us lead you through the wonderful rooms and witness the passing of the years from medieval austerity to Victorian comfort. See the Tudor gatehouse where you can explore the accessible priest's hole and view the 'Marian Hangings', an exquisite display of embroidery by Mary, Queen of Scots and Bess of Hardwick. The tour ends on the roof with a magnificent panoramic view of the surrounding countryside.

Tour cost	£10
Group size	15 - 48
Availability	March to October (except August): Thursday and Friday, between 11 and 4
Duration	1 hour 30 minutes
Catering	Catering by arrangement

★ A Country House and Garden

Enjoy all of Oxburgh's many delights, inside and out, on this comprehensive tour of Oxburgh estate, including the spectacular Tudor gatehouse, the impressive moat and manor house. The delightful grounds feature a French parterre, herbaceous borders and an enchanting kitchen garden. Enjoy the luxury of having the house, grounds and gardens to yourself on a day that is normally closed to the public.

Tour cost	£15
Group size	15 - 50
Availability	March to October (except August): Thursday and Friday, between 11 and 4
Duration	3 hours
Catering	Catering by arrangement.

★ Blooming Lovely

Each season provides a different theme for a light-hearted and entertaining tour of Oxburgh's attractive gardens that feature a French parterre, walled orchard and kitchen garden. From 'Pruning Workshops' to 'Waking up the Garden', 'Putting the Garden to Bed' to 'Woodland Walks', you'll find a great reason to visit this garden at any time of the year.

Tour cost	£6
Group size	15 - 50
Availability	March to October, Thursday and Friday, 10 - 4. November to February, weekdays, 11 - 3
Duration	1 hour 30 minutes
Catering	Catering by arrangement

★ Hidden Oxburgh

The secret doors and priest's hole make this wonderful manor house a mysterious and fascinating place to discover in depth with the help of a knowledgeable National Trust guide. From the magnificent gatehouse to the very top of the tower, take this opportunity to witness places normally unseen, learn some rather surprising secrets and delve into the dangerous world of Tudor politics.

Tour cost	£10
Group size	15 - 48
Availability	March to October (except August): Thursday and Friday, between 11 and 4
Duration	1 hour 30 minutes
Catering	Catering by arrangement



Movie moment

Love on a Branch Line (1994)

Peckover House and Garden

Wisbech, Cambridgeshire



This large outstanding Victorian garden includes an orangery, summer-houses, roses, herbaceous borders, croquet lawn and a 17th-century thatched barn. Peckover House is a Georgian brick town house, built around 1722, and is renowned for its very fine plaster and wood Rococo decoration. There are also displays about the Peckover family, who were staunch Quakers and lived here for 150 years. Peckover is a real hidden gem, an oasis hidden away in an urban environment.

Note: nearest car parking in Chapel Road car park (PE13 1RG), 250 yards from house. Also in walking distance is the birthplace of Octavia Hill, who co-founded the National Trust in 1895 (same opening hours as Peckover House).

 **Garden best in April-June**

Contact

Paula Arnold, Property Secretary
T 01945 583463 F 01945 587904
E peckover@nationaltrust.org.uk

Location

Peckover House and Garden, North Brink, Wisbech, Cambridgeshire PE13 1JR. West of town centre on north bank of River Nene (B1441).

Coaches

Drop-off point 10 yards from entrance. No coach parking. Nearest parking for coaches is car park in Harecroft Road, 500 yards, Sat Nav PE13 1RL

Visit

Average length of visit: 2 hours 30 minutes. On-board coach welcome. Introductory talk. Out of hours tours[£].

Catering

Reed Barn tea-room, licensed, assisted service, 80 covers. Set menu and out of hours catering available. Groups can reserve tables.

Attractions nearby

Elgoods Brewery and Garden, Houghton Mill, *Octavia Hill's Birthplace House*, Oxburgh Hall, Wicken Fen National Nature Reserve, *Wisbech and Fenland Museum*.



Group admission

£5.95. Outside normal opening hours £9. Garden only £3.90. Outside normal opening hours £6

Peckover House and Garden	M	T	W	T	F	S	S
Garden and tea-room							
11 Feb-4 Mar						S	S
10 Mar-1 Apr		M	T	W			S
2 Apr-15 Apr		M	T	W	T	F	S
16 Apr-4 Nov		M	T	W			S
House							
10 Mar-1 Apr		M	T	W			S
2 Apr-15 Apr		M	T	W	T	F	S
16 Apr-4 Nov		M	T	W			S
Whole property							
8 Dec-16 Dec						S	S

Open all week during spring Bank Holiday, 4 to 10 June, Wisbech Rose Fair, 4 to 7 July (garden and tea-room open 11 and house 12), plus half-term, 29 October to 4 November. Christmas opening: 8 and 9, plus 15 and 16 December. Gift shop and second-hand bookshop open as house.

Access for all

 Main house

Tea-room  Garden



Peckover House and Garden

Continued



Special interest tours

★ Behind the Scenes

This delightful Georgian brick town house, owned by a prominent Quaker banking family, was built around 1772 and is renowned for its very fine plaster and wood Rococo decoration. Join us on a guided tour of rooms in the house not normally open to the public, from the bank vault in the basement to the servants' rooms right up on the roof.

Tour cost	£2.50 (out of hours: £8.50)
Group size	15 - 30
Availability	Monday to Wednesday, mornings and evenings; Thursday and Friday by prior arrangement
Duration	1 hour 30 minutes

★ Private Tour/Twilight Tour

Choose Peckover for an exclusive out of hours tour around one of the country's very best town houses, with a beautiful garden. This private guided tour will lead you around the elegant Georgian home, revealing the secrets of the remarkable Quaker family who lived here for over 150 years, before taking you into the outstanding Victorian garden with its orangery, summer-houses, roses and thatched barn.

Tour cost	£15
Group size	15 - 53
Availability	Monday to Wednesday, mornings and evenings; Thursday and Friday
Duration	2 hours

★ The National Trust Connection

Take the opportunity to see two different sites in one combined guided tour of the conservation areas of North and South Brink in Wisbech. Begin your tour at Peckover House and Garden, exploring the Georgian town house and 2-acre garden and then cross the bridge over the River Nene to the birthplace of Octavia Hill. This houses a museum charting the work of the social pioneer and National Trust founder.

Tour cost	£13. Tour fees payable separately - Peckover £9, Octavia Hill's Birthplace House £4
Group size	15 - 53
Availability	Monday to Wednesday, mornings; Thursday and Friday
Duration	4 hours

★ The Twilight Garden Tour

Your opportunity to visit one of the best town gardens in the country on an enchanting private evening tour. The evening will begin with an informative guided tour by one of our staff and then you will be free to wander at your leisure and enjoy the pretty 2-acre Victorian garden, with its orangery, summer-houses, croquet lawn and herbaceous borders.

Tour cost	£6
Group size	15 - 53
Availability	April to September: weekday evenings
Duration	1 hour 30 minutes

 **Movie moment**
Dean Spanley (2008)

Sutton Hoo

Woodbridge, Suffolk



The Anglo-Saxon royal burial site where the priceless Sutton Hoo treasure was discovered on the eve of the Second World War. The award-winning exhibition has a full-size reconstruction of the burial chamber, stunning replica treasures and original finds from one of the mounds, including a prince's sword. You can also look inside Edith Pretty's Edwardian house or enjoy the beautiful seasonal colours on a walk around the estate. **Note:** private guided tours available.

Contact

Lynette Titford, Property Administrator
 T 01394 389700 F 01394 389702
 E lynette.titford@nationaltrust.org.uk
 A Sutton Hoo, Tranmer House, Sutton Hoo,
 Woodbridge, Suffolk IP12 3DJ.

Location

Sutton Hoo, Woodbridge, Suffolk IP12 3DJ
 On B1083 Melton to Bawdsey. Follow signs from
 A12 north of Woodbridge.

Coaches

Coach parking for 4 coaches, 40 yards from
 entrance. Drop-off point 10 yards. Coaches must
 book. At busy times coaches can drop off and park
 in nearby town of Woodbridge, 3 miles.

Visit

Average length of visit: 4 hours. On-board coach
 welcome. Guided tour[£]. Out of hours tours[£].

Catering

Contemporary licensed café with outside area,
 assisted service, 80 covers, serving light lunches
 11:30 to 2:30. Hot snacks and cakes available all
 day. Set menu, out of hours catering available.

Attractions nearby

Dunwich Heath: Coastal Centre and Beach,
 Flatford: Bridge Cottage, Orford Ness National
 Nature Reserve.



Group admission

£6.50

Sutton Hoo		M	T	W	T	F	S	S
1 Jan–5 Feb	11–4	S	S
11 Feb–19 Feb	11–4	M	T	W	T	F	S	S
25 Feb–18 Mar	11–4	S	S
21 Mar–1 Apr	10:30–5	.	.	W	T	F	S	S
2 Apr–28 Oct	10:30–5	M	T	W	T	F	S	S
29 Oct–4 Nov	11–4	M	T	W	T	F	S	S
10 Nov–23 Dec	11–4	S	S
27 Dec–31 Dec	11–4	M	.	.	T	F	S	S

Open Bank Holiday Mondays. Estate walks open daily all year, 9 to 6
 (except for some Thursdays, November to end December).

Access for all



Grounds

Special interest tours

★ Burial Mound Tour

Buried in history, the secrets of Sutton Hoo can now
 be unearthed on this remarkable and exclusive group
 tour of a unique Anglo-Saxon burial ground. Let expert
 historian guides teach you about the importance of
 ship-burials and how and why the fabulous treasures
 discovered here lay undisturbed for over a thousand
 years.

Tour cost	£2.50
Group size	15 – 40
Availability	During normal opening times
Duration	1 hour 15 minutes



If you like this, you may also enjoy...

Avebury in Wiltshire (South West), one of the most
 important megalithic monuments in Europe

Wicken Fen National Nature Reserve

Ely, Cambridgeshire



Wicken Fen is one of Europe's most important wetlands, supporting an abundance of wildlife. The raised boardwalk and lush grass drives allow easy access to a lost landscape of flowering meadows, sedge and reedbeds, where you may see rarities such as hen harriers, water voles and bitterns. Grazing herds of Highland cattle and Konik ponies are helping to create a diverse range of new habitats for wildlife and visitors to enjoy and explore. **Note:** traditional open fen boat trips available. Maximum 12 per trip, 45 minutes. Charges apply, call for details.

Contact

Isabel Sedgwick, Visitor Services Manager
 T 01353 720274 F 01353 724700
 E isabel.sedgwick@nationaltrust.org.uk

Location

Wicken Fen National Nature Reserve, Lode Lane, Wicken, Ely, Cambridgeshire CB7 5XP. South of Wicken (A1123), 3 miles west of Soham (A142), 9 miles south of Ely, 17 miles north-east of Cambridge via A10.

Coaches

Coach parking, 60 yards from entrance.

Visit

Average length of visit: 1 hour 30 minutes. Introductory talk. Guided tour[£]. Out of hours tours[£].

Catering

Café overlooking the ancient fen, assisted service, 30 covers, serving homemade cakes, light lunches and hot soup. Private room and out of hours catering available.

Attractions nearby

Anglesey Abbey, Gardens and Lode Mill, *Denny Abbey, Ely Cathedral*, Houghton Mill, Ickworth, *National Stud/Horseracing Museum, Ouse Washes*, Wimpole Estate, Wimpole Home Farm.



Group admission

£5.25 (groups 12+)

Wicken Fen	M	T	W	T	F	S	S
Reserve, Visitor Centre and shop							
Open all year	10-5	M	T	W	T	F	S
Café							
1 Jan-12 Feb	10-4:30	.	.	W	T	F	S
13 Feb-4 Nov	10-5	M	T	W	T	F	S
7 Nov-30 Dec	10-4:30	.	.	W	T	F	S
31 Dec-31 Dec	10-4:30	M
Fen Cottage							
24 Mar-22 Jul	2-5	S	S
28 Mar-18 Jul	11-3	.	.	W	.	.	.
25 Jul-29 Aug	11-5	.	.	W	T	F	S
1 Sep-4 Nov	2-5	S	S
Cycle hire							
31 Mar-4 Nov	10-5	S	S

Closed 25 December. Access on and off the reserve available dawn to dusk. Visitor centre closes dusk in winter. Some paths may be closed in very wet conditions. Fen Cottage also open Bank Holiday Mondays. Cycle hire: last hire 3:30; open every day during Cambridgeshire school holidays March to November.

Access for all



Grounds

Special interest tours

★ A Warden's View of the Fens

Fens are special, with a great deal going on between the big East Anglian skies and the water, and our team of wardens will tell you what's involved in looking after them. The sedge fen is managed as it has been for hundreds of years, but other parts of the fen are at the cutting edge of nature conservation, with new ways of safeguarding the species of this precious wetland.

Tour cost	£30 per group
Group size	12 - 24
Availability	Please check for availability (out of hours: call for details)
Duration	1 hour 30 minutes

★ Boat Trip

Enjoy a gentle boat ride through Britain's oldest nature reserves. Open boats were traditionally used to transport peat and sedge from the fen to the surrounding villages; today they provide a delightful way to travel through the landscape and discover some of the secret wildlife that makes its home here.

Tour cost	£3.40
Group size	10 - 12
Availability	May to September (out of hours: call for details)
Duration	1 hour

★ Fen Adventures by Bike

Pop on your bicycle clips and follow your guide on two wheels across Adventurers' Fen and some of our new wetlands, which have been reclaimed from surrounding farmland. It's a ride of about 10 miles, and the good news is - no hills! It's also a great way to find out about our varied fenland wildlife along the way. No need to bring bikes, we can provide these.

Tour cost	£60 per group
Group size	6 - 10
Availability	Tour available on request
Duration	3 hours

★ Wild Ponies Galore

Discover the part the wild ponies have to play in managing and conserving the wetlands at Wicken Fen. Join a guided walk across original undrained fenland, or restored wetland, to find the Konik ponies. Enjoy this fascinating insight into the behaviour, social structure and management of the herd from our informed and experienced warden.

Tour cost	£30 per group
Group size	10 - 15
Availability	Call for details
Duration	2 hours

Wimpole Estate

Royston, Cambridgeshire



A unique working estate still guided by the seasons, with an impressive mansion at its heart. Uncover the stories of the people who shaped Wimpole, discover beautiful interiors by Gibbs, Flitcroft and Soane, soak up the atmosphere and take in the spectacular views. Stroll through the pleasure grounds to the walled garden, bursting with seasonal produce and glorious herbaceous borders. At Home Farm, contrast the traditional farmyard with the noisy modern piggery and cattle sheds. **Note:** no group rates on Sundays or Bank Holiday Mondays.



Garden best in April–October

Contact

Clare Childerley, Administrator
T 01223 206007 F 01223 207838
E clare.childerley@nationaltrust.org.uk

Location

Wimpole Estate, Arrington, Royston, Cambridgeshire SG8 0BW. 8 miles south-west of Cambridge (A603), 6 miles north of Royston (A1198).

Coaches

Drop-off point 275 yards from entrance. Maximum 4-minute walk to hall, garden entrance and restaurant.

Visit

Average length of visit: 3 hours. On-board coach welcome. Introductory talk. Guided tour[£]. Larger groups may be split when visiting the hall.

Catering

Old Rectory Restaurant (licensed), self-service, 100 covers. Stable Kitchen, self-service in stable block. Reservations available for smaller groups.

Attractions nearby

Anglesey Abbey, Gardens and Lode Mill, *City of Cambridge*, *Duxford IWM*, Houghton Mill, Wicken Fen National Nature Reserve.



Group admission

Hall, garden and farm £13.20. Hall and garden £8.80. Garden only £3.70. Farm only £7.20. Farm (members) £3.35

Wimpole Estate		M	T	W	T	F	S	S
Hall								
11 Feb–4 Nov	11–5	M	T	W	T	.	S	S
Home Farm								
1 Jan–5 Feb	11–4	S	S
11 Feb–4 Nov	10:30–5	M	T	W	T	F	S	S
10 Nov–23 Dec	11–4	S	S
Garden, restaurant and shop								
1 Jan–8 Feb	11–4	M	T	W	.	.	S	S
11 Feb–4 Nov	10:30–5	M	T	W	T	F	S	S
5 Nov–24 Dec	11–4	M	T	W	.	.	S	S
Park								
Open all year	Dawn–dusk	M	T	W	T	F	S	S

Home Farm, garden, restaurant and shops: 1 to 4 January and 27 to 31 December, open daily, 11 to 4. Stable shop and café: open 26 December, 11 to 4. Bookshop open same days as shop but times may vary.

Access for all



Farm Gardens

Special interest tours

★ Bats, Trees and Trefoils

Join our enthusiastic and knowledgeable forester on a guided walk in the parkland, that can be tailor-made for your group. With subjects from flora and fauna to the history of veteran trees, summer evening bat walks, autumnal fungi walks, or the medieval landscape.

Tour cost	£5
Group size	15 – 30
Availability	All year, Monday to Friday
Duration	1 hour 30 minutes

★ Behind the Garden Wall

A delightful behind-the-scenes guided tour of the gardens at Wimpole, including the walled kitchen garden, abundant with seasonal fruit and vegetables. You will be expertly guided by the head gardener or one of his assistants and have the opportunity to take a look at the magnificent glasshouse with its vine holes, the Mushroom House, bothy and new compost area.

Tour cost	£8. NT members £5
Group size	15 – 30
Availability	April to October, Monday to Friday, 9 to 5 (out of hours: available in summer months)
Duration	1 hour 30 minutes

★ Highlights of Wimpole Hall **New**

A private guided tour of the ground floor of Wimpole Hall in the company of one of our expert guides, giving your group highlights of the history and stories about the owners of the estate. Includes the option to return on a self-guided visit of the whole house later in the day.

Tour cost	£12. NT members £7
Group size	15 – 45
Availability	Saturday, Monday to Thursday, starting at 10-10:30
Duration	45 minutes

★ Longhorns and Leicester Longwools

Join our experienced stockman for a day down on the farm and come face-to-face with some of the rare-breed inhabitants that call it home. Whatever time of year you turn up for a tour there's always something interesting going on and something new to learn, from why we keep rare breeds in the first place to suckler cows, sheep shearing and rams for lambs.

Tour cost	£10. NT members £6
Group size	15 – 30
Availability	April to October, daily from 11
Duration	1 hour 30 minutes



Movie moment
Easy Virtue (2008)

East of England

Places with limited availability for groups

Coggeshall Grange Barn Colchester, Essex



One of the oldest surviving timber-framed barns in Europe with a cathedral-like interior. The renovated Byre houses an exhibition of local woodcarving and tools. **Note:** visit Paycocke's too – joint ticket available.

Contact

Warden T 01376 562226
E coggeshall@nationaltrust.org.uk

Location

Coggeshall Grange Barn, Grange Hill, Coggeshall, Colchester, Essex CO6 1RE.

Access for all



Special interest tours



The Social History of Coggeshall Grange Barn

This enlightening talk gives visitors a comprehensive introduction to the history of this 13th-century monastic building, one of the oldest surviving timber-framed barns in Europe. Originally part of a Cistercian monastery, the barn was restored in the 1980s and contains a small collection of farm carts and wagons.

Tour cost	£2.70 (out of hours: £5). Special joint tour ticket available outside normal opening hours also includes entry and tour of Paycocke's, £6
Group size	10 – 50
Availability	During normal opening times
Duration	45 minutes



Dunstable Downs, Chilterns Gateway Centre and Whipsnade Estate

Dunstable, Bedfordshire



Commanding outstanding views over the Vale of Aylesbury and the Chiltern Ridge, this chalk grassland Area of Outstanding Natural Beauty is a kite-flying hotspot. **Note:** the Chilterns Gateway Centre is owned by Central Bedfordshire Council and managed by the National Trust. Open daily (except 24 to 25 December), 10 to 5 in summer and 10 to 4 in winter. Toilets available only when the centre is open. Groups welcome by prior arrangement, please call to request group information pack.

Contact

Property Administrator
T 01582 500920 F 01582 814124
E dunstabledowns@nationaltrust.org.uk

Location

Dunstable Downs, Chilterns Gateway Centre and Whipsnade Estate, Whipsnade Road, Dunstable, Bedfordshire LU6 2GY.

Access for all



Dunstable Downs

Dunwich Heath: Coastal Centre and Beach

Saxmundham, Suffolk



An Area of Outstanding Natural Beauty and an important nature conservation area offering many excellent walks, an award-winning tea-room and a gift shop. **Note:** maximum three coaches. No parking fee when tea-room booked. Guided tours can be booked.

Contact

Richard Gilbert, Countryside and Visitor Experience Warden T 01728 648501 F 01728 648025
E richard.gilbert@nationaltrust.org.uk

Location

Dunwich Heath: Coastal Centre and Beach, Dunwich, Saxmundham, Suffolk IP17 3DJ.

Access for all



SeaWatch building Grounds



Special interest tours



Heathland Discovery

Explore the stunning lowland heath and beautiful beach that make up one of East Anglia's most important nature conservation areas. Join your expert guide to walk by open tracts of heather and gorse, through shady woods and past sandy cliffs and learn about the rare wildlife that lives there, including the nightjar, Dartford warbler and the ant-lion. Also discover the fascinating history of this unique site.

Tour cost	£5. Does not include car park charge (free parking for members)
Group size	6 – 24
Availability	April to September, Sunday to Thursday
Duration	2 hours

Elizabethan House Museum

Great Yarmouth, Norfolk



A 16th-century quayside building with rooms displayed to reflect the lives of families over time. Tudor bedroom and dining room. Victorian kitchen and scullery.

Note: the house is managed by Norfolk Museums and Archaeology Service. Maximum four groups per day.

Contact

Mr Pat O'Grady, Administration Assistant
T 01493 743943 F 01493 743940
E pat.ogradey@norfolk.gov.uk
A Museum Office, Central Library, Tolhouse Street,
Great Yarmouth, Norfolk NR30 2SH

Location

Elizabethan House Museum, 4 South Quay, Great Yarmouth, Norfolk NR30 2QH.

Access for all



Hatfield Forest

Essex



Hatfield Forest is a rare surviving example of a medieval royal hunting forest; an outstanding ancient woodland with many excellent walks and nature trails.

Note: no admission charges for this property, although a car park charge does apply. The Shell House is restored and open to visitors most weekends and some weekdays, please check opening times with the property.

Contact

Nicky Daniel, Property Administrator
T 01279 870678 F 01279 874044
A Hatfield Forest Estate Office, Takeley, Bishop's Stortford, Hertfordshire CM22 6NE

Location

Hatfield Forest, near Bishop's Stortford, Essex.

Access for all



EE 20

Please book all group visits, tours and catering direct with our places

Houghton Mill

near Huntingdon, Cambridgeshire



An impressive timber-built working watermill on an island in the Great Ouse. Delightful riverside location and pretty tea-room. Excellent base for walks.

Note: milling demonstrations subject to river level. Maximum one group per day. Large groups may need to be split into smaller groups.

Contact

Phil O'Donoghue, Property Manager T 01480 301494
E philip.odonoghue@nationaltrust.org.uk

Location

Houghton Mill, Houghton, near Huntingdon, Cambridgeshire PE28 2AZ.

Access for all



Orford Ness National Nature Reserve

Woodbridge, Suffolk



A large, remote and wild place, internationally important for its geology and wildlife. It was a secret military site for most of the 20th century. **Note:** allow for boat crossing. Access normally on foot, but guided and trailer tours available (booking essential). 'Pagodas' accessible only on guided tours.

Contact

Duncan Kent, Countryside and Visitor Experience Warden T 01394 450900
E duncan.kent@nationaltrust.org.uk

Location

Orford Ness National Nature Reserve, Orford, Woodbridge, Suffolk.

Access for all



Paycocke's

Colchester, Essex



Built for Thomas Paycocke around 1500, this attractive half-timbered house is evidence of the great wealth generated by the East Anglian cloth trade.

Note: maximum group size 25. Larger groups will have to be split to stagger visiting times. Visit Coggeshall Grange Barn too - joint ticket available.

Contact

Custodian T 01376 561305
E paycockes@nationaltrust.org.uk

Location

Paycocke's, 25 West Street, Coggeshall, Colchester, Essex CO6 1NS.

Access for all



Shaw's Corner

near Welwyn, Hertfordshire



An Arts and Crafts-influenced house, the home of playwright George Bernard Shaw for over 40 years. The rooms remain much as he left them. **Note:** access roads very narrow. Booked groups of up to 30 are welcome Wednesday to Friday afternoons; larger groups on Wednesday to Friday mornings between March and October. No catering facility but soft drinks and ice-creams available to purchase.

Contact

Sue Morgan, House Manager T 01438 820307
E shawscorner@nationaltrust.org.uk

Location

Shaw's Corner, Ayot St Lawrence, near Welwyn, Hertfordshire AL6 9BX.

Access for all



Grounds

Sheringham Park

Upper Sheringham, Norfolk



Fabulous displays of rhododendrons and azaleas from early May into June, alongside stunning coastal views. Enjoy a snack in the sheltered courtyard.

Note: maximum three coaches parked at any one time. Cream teas can be arranged at £3.55 per head.

Contact

Malcolm Fisher, Visitor Services Manager
T 01263 820550 F 01263 820556
E sheringhampark@nationaltrust.org.uk

Location

Sheringham Park, Upper Sheringham,
Norfolk NR26 8TL.

Access for all



Grounds

Special interest tours

★ An Introduction to Sheringham Park

Before you take a look around this stunning park and woodland garden, enjoy a short introductory talk on the history of the landscape to really make the most of your visit. Discover more about one of Humphry Repton's most important design legacies and then set off exploring along the miles of beautiful paths that lead you through the park and woodland.

Tour cost	£2
Group size	10 – 50
Availability	April to October, 10 to 4 (out of hours: winter talks available on request)
Duration	15 minutes



www.nationaltrust.org.uk/groups

★ Repton, Rhododendrons and Rare Views

One of Humphry Repton's most famous landscaped parks is home to 80 species of rhododendron, along with extensive collections of azaleas, magnolias and camellias. Magnificent colours are on display particularly when the rhododendrons are at their peak from early May into June. Discover about the history of the park and its plants, see Repton's original designs for the estate at the visitor centre and climb to the top of the viewing towers for breathtaking vistas of the surrounding coast and countryside.

Tour cost	£4 (out of hours: £4)
Group size	10 – 50
Availability	April to October, 10 to 4 (out of hours: evenings and winter tours can be arranged)
Duration	1 hour

The Textile Conservation Studio

Norfolk

The Textile Conservation Studio is the National Trust's only in-house conservation facility, housed in specially converted, award-winning barns on the Blickling Estate. **Note:** only six tours per season, maximum group size 25 – book early to avoid disappointment. Off-road car and coach parking available. Nearest catering is at Blickling Hall.

Contact

Carol Watts, Business Support Coordinator
T 01263 735878
E carol.watts@nationaltrust.org.uk

Location

Malthouse Barn, The Street, Oulton, Norfolk NR11 6AF.

Special interest tours

★ A Stitch in Time **New**

This is a chance to see the Trust's textile conservation studio in action, taking a really close look at the challenges involved in the intricate conservation work required for historic textiles. The team of professional conservators are happy to answer questions on how they use a combination of sophisticated modern technology and old-fashioned needlework skills, to bring textiles back to life. Only six tours per year, so please book early to avoid disappointment.

Group size	Max 25
Availability	Wednesdays, other days by special arrangement
Duration	1 hour 30 minutes

Theatre Royal, Bury St Edmunds

Bury St Edmunds, Suffolk



The only surviving Regency playhouse in Britain; guided tours at the Theatre Royal provide a fascinating introduction to theatre-going in the early 1800s.

Note: for full Theatre Royal information please visit www.theatreroyal.org

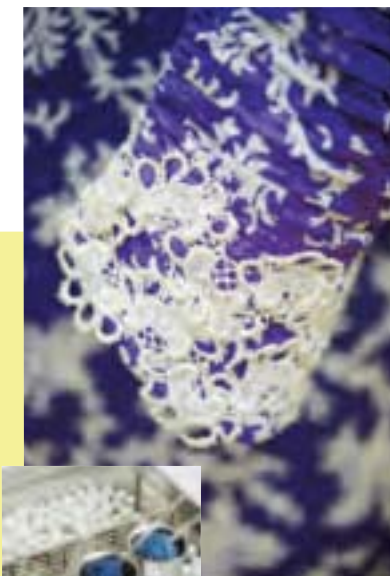
Contact

T 01284 829957
E grouptours@theatreroyal.org

Location

Theatre Royal, Bury St Edmunds, Westgate Street,
Bury St Edmunds, Suffolk IP33 1QR.

Access for all



Gardens in the East of England

Anglesey Abbey, Gardens and Lode Mill

This garden was designed to delight all year round. In winter, drifts of white snowdrops and yellow aconites add colour to the frosty landscape; there are over 230 varieties of snowdrops for visitors to discover. In spring, the scents and sights of tree blossom, hyacinths and daffodils herald the warmer weather. For summer, the herbaceous border and dahlia gardens offer vibrant splashes of colour. And come the autumn, the garden is transformed into a canvas of rich reds and browns.



Blickling Estate

The dramatic 400-year-old yew hedges are just an introduction to the beautiful formal gardens surrounding this stunning Jacobean house. Then, just beyond the double borders and topiary, there is a Victorian wilderness, originally thought to have been a formalised woodland area. The new Orangery Garden is a spring delight with hellebores, primroses, willow, viburnum, mahonia, daphnes and camellia.



Oxburgh Hall

The Victorian Parterre is a real splash of colour during the summer months and was created by the Bedingfeld family following an inspirational trip to Versailles. It has also been a large vegetable patch during the Second World War as part of the Government's 'Dig for Victory' campaign.



Peckover House and Garden

The gardens themselves are a sensory delight, complete with orangery, summer-houses, croquet lawn and rose garden with more than 60 varieties of the most beautiful fragrant roses.



Wimpole Estate

As befits a grand house it has a gardening history spanning four centuries. Enclosed by a ha-ha, the 19th-century Pleasure Grounds extend as far as the impressive Walled Garden which has magnificent glasshouses. Dominating the North Garden is the Victorian Parterre, which was restored in 1996, in a Union Jack pattern of triangular beds. Wimpole is also the home of the National Collection of walnuts, with many walnut trees planted on the estate including a walnut avenue to the east of the hall.

Felbrigg Hall Gardens and Estate

In the Walled Garden there are double borders of mixed shrubs and right at the heart of it is the Kitchen Garden, laid out around a pond and divided into allotments of mixed vegetables and their traditional companions. There are excellent herb borders planted to each side of an 18th-century dovecote. The walls are also clothed in fruit, with many varieties of apples, pears, cherries, peaches, apricots and fig. Beyond the Walled Garden and close to the house, there are many fine specimen trees mainly of transatlantic origin, including red oaks, western red cedar and giant redwood.





**National
Trust**

If you require this information in
alternative formats, please telephone
+44 (0) 844 800 2329* or email
traveltrade@nationaltrust.org.uk

*Calls provided by BT will be charged at 5 pence per minute.
A call set-up fee of 8 pence per call applies to calls from
residential lines. Mobile and other providers' costs may vary

Every effort has been made to ensure accuracy at the time of going
to press, October 2011, but changes may occur to site information
over the duration of this guide

© National Trust 2011
Registered charity no. 205846

Editors: Vicky North/Dee Maple
Design: Shorthose Russell
Database: Roger Shapland/Dave Buchanan
Map: © Blacker Design, MAPS IN MINUTES/Collins Bartholomew 2011
Print: Pureprint Group

Cover © National Trust Images/Matthew Antrobus. © National Trust Images/Matthew Antrobus, Bill Batten, Andrew Butler, Nick Daly, Rod Edwards,
Nick Guttridge, John Hammond, Paul Harris, Jason Ingram, Andrea Jones, James F Dodds, David Levenson, Nadia Mackenzie, Marianne Majerus,
Rob Matheson, Nick Meers, John Millar, Robert Morris, Stephen Robson, Neil Rutherford, Arnhel de Serra, Ian Shaw, William Shaw, Megan Taylor,
Rupert Truman, Paul Wakefield and Mike Williams. Other photographers: © David Kirkham/Fisheye Images

Printed on: Cocoon Silk, manufactured from 100% recycled paper