

National Trust Cottages Access Statement

St Oswald's Cottage
Holy Island
Berwick-upon-Tweed
Northumberland
Ref: 017010



Introduction

- St Oswald's Cottage is a spacious single storey cottage on Holy Island with uninterrupted views to Lindisfarne Castle. It was designed by Sir Edwin Lutyens and is L-shaped with the key reception rooms facing onto the garden looking over to the Castle.
- The Cottage has 2 double bedrooms and 1 single bedroom with level access throughout
- The Cottage has night storage heating throughout and a wood burning stove in the sitting room

The Cottage is arranged as follows:

Ground floor:

- Kitchen/dining room, sitting room, bathroom with shower over bath, bathroom with roll-top bath, 2 double bedrooms and 1 single bedroom, front door (level access) and back door (1 step), front and back gardens.

Pre-Arrival

- See the main webpage for booking and location details.
- Please contact us prior to booking if you have any specific access requirements.
- Directions provided with booking
- Please bring torch if arriving in dark, as there are no streetlights here

Approach



- The cottage is the last building in the village on the road to the Castle. The approach to the cottage is along a tarmac road through the village, following the directions on the pre-arrival information.
- There are gates to the parking area at the side of the cottage.

Arrival & Parking Facilities



- The parking area is to the side of the cottage. There is parking for two cars here.
- The parking area has a gravel surface.
- The approach to the back door of the cottage from here is along a 850mm wide level brick path.
- The step-free entrance to the cottage is via the garden gate at the front and through the front door.
- The key safe is to the left of the back door beside the down pipe.

Getting in (and out) of the cottage



Back door with step



Approach to front door



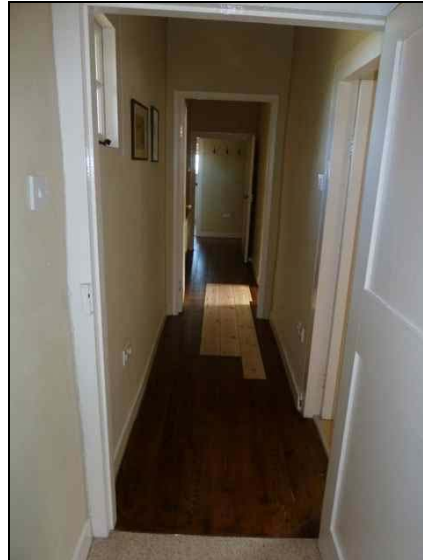
Front door (level access)

- There is a 230mm high step into the back door. The door is 950mm wide.
- The door opens straight into the kitchen/dining room.
- The front door is approached from the front gate and has level access.
- The front gate is 1070mm wide, the path is 850mm wide and the front door is 870mm wide with a 30mm metal rainbar at the threshold.

Getting around the cottage



Corridor from sitting room



Corridor by front door

- The cottage is on one level.
- The width of the doorways ranges from 690mm to 950mm. All the bedroom doors and doors to sitting room and kitchen are 820-840mm wide except for the door to the single bedroom which is 690mm wide.
- The corridors are 840 -1000mm wide
- There are wooden floorboards in the corridors, fitted carpets in the sitting room and bedrooms (except for one bedroom which has floorboards and loose carpets) and vinyl flooring in the bathrooms and kitchen.
- There is good circulation space in most areas

Kitchen/Dining Room



- This is just within the back door.
- The kitchen equipment includes a washer/dryer, dishwasher, fridge/freezer and microwave and electric cooker
- The worktop height is 935mm
- The sink has cross top taps
- There is 1500mm turning space between the units and the dining table
- The wooden table is 735mm high with 630mm knee clearance underneath
- The six wooden chairs with rush seating and backrest have a seat height of 460mm
- The room has a central strip light, a wall light and lights under the wall units.
- The door into the sitting room from here is 820mm wide

Sitting Room



- 820mm wide doors at both ends
- Large room with wood burning stove and views out over to Lindisfarne Castle
- 2 x 2-seater sofas with seat heights of 450mm and 480mm
- 1 x armchair with seat height of 450mm
- Wall lights, standard lamp and reading lamp

Bathroom 1 (bath with over bath shower)



- Bathroom door is 690mm wide
- Bathroom comprises lavatory, basin and bath with electronic shower over bath
- The WC is 435mm high

- The basin is 800mm high
- The bath is 560mm high x 1660mm long x 670mm wide with a 270mm wide built-in level shelf/seat at the end

Double bedroom



- Door is 840mm wide. Room has wooden floorboards with loose carpets.
- Double bed 1500mm wide x 2000mm long x 600mm high
- 300mm clearance under bed
- Reading lamp either side of the bed
- Free-standing wardrobe, chest of drawers & dressing table
- Three chairs
- View over garden to rear of cottage and over to the Castle

Single Bedroom



- Door to bedroom is 690mm wide
- Divan bed 1900mm long x 900mm wide x 670mm high.
- 50mm clearance under bed
- Beside light, ceiling light and freestanding wardrobe.

Bathroom 2 (with roll-top bath)



- Spacious room (2700mm x 2760mm) with 690mm wide door and slight lip at threshold
- Bathroom comprises lavatory, basin and bath with shower attachment on taps
- The WC is 435mm high
- The basin is 790mm high
- The bath is 650mm high x 1650mm long x 750mm wide

Double bedroom



- Spacious room (2700mm x 2760mm) with 830mm wide door
- Double divan bed is 2000mm long x 1800mm wide x 600mm high. The bed is zip-linked and can be made into a twin if required.
- 50mm clearance under bed
- Bedside lights, side lamp
- Dressing table, wardrobe and bedside cabinets

Garden



Garden at rear with views over to Castle



Path through garden at front

- Large garden at rear mainly laid to grass with shrubs and plants round the edges.
- Views over to Lindisfarne Castle
- Wooden picnic table with integral seats. Table is 750mm high with 690 knee clearance underneath. Seats are 485mm high.
- Front garden is laid to lawn with some plants around the edges.

Additional Information

- Assistance dogs are welcome at all our cottages
- In the event of a fire, it is the responsibility of the guests to evacuate themselves. Vibrating fire/smoke detectors are available if requested at time of booking. Please contact us if you have any other specific access requirements in this respect.

Facilities at all cottages

The National Trust aims to expand the list of accessible /equipment/items available at each cottage and these may include

- Cordless kettle
- Hollowfibre bedding
- Chair with armrests
- Good reading light
- Large handle vegetable peeler
- Easy tin opener
- Non-slip mat for bath/shower
- Non-slip place mat
- Easy jar opener
- Information in alternative formats (on request)



Please note that we cannot guarantee that all items will be available at the time of your visit. Please enquire at the time of booking regarding any particular requests.

Specialist equipment

Other specialist equipment such as wheelchairs, bath seats, toilet frames etc may be available for loan or purchase from the local Red Cross loan centre. Please check this out before booking the Cottage and contact us if you require further information.

<http://www.redcross.org.uk/standard.asp?id=89425>

Future Plans to improve Access to NT Holiday Cottages

We are currently in the process of writing access statements for all our holiday cottages and improving access over time for all our guests. All feedback is very helpful in informing us of ways in which we can improve access to all our cottages. We welcome any comments or ideas from you about access at this cottage and thank you for taking the time to do this. Please do this in the most convenient way for you. See contact details below or information on website.

About the Access Statement

This Access Statement is intended to provide key information about the cottage that may be particularly relevant to guests with disabilities. It is reviewed annually. Please contact us prior to booking if you would like more detailed information and we will be happy to oblige.

Phone: 0844 800 2070

Email: cottages@nationaltrust.org.uk

Access for All at the National Trust

We continue to work to improve accessibility at all our holiday cottages. We welcome comments and ideas on improving access.

Phone: 0844 800 2070

Email: cottages@nationaltrust.org.uk

June 2012