

National Trust Cottages Access Statement

East Cottage
South Foreland Lighthouse
Dover
Kent
Ref: 021003



Introduction

- East Cottage is a single storey cottage next to the South Foreland Lighthouse. It is located in an elevated position on the cliffs of Dover with far-reaching views across the Channel
- The Cottage has two internal steps but is otherwise on one level
- The road to the cottage is long and bumpy
- The cottage has night storage heaters in all rooms and an electric fire in the sitting room

The Cottage is arranged as follows:

- Hallway, bathroom with shower over bath, two steps up to kitchen/dining room, sitting room, twin bedroom, double bedroom and separate lavatory. Sheltered courtyard area at back.

Pre-Arrival

- See the main webpage for booking and location details.
- Please contact us prior to booking if you have any specific access requirements.
- Directions provided with booking
- Please bring torch if arriving in dark, as there are no streetlights here

Approach

- The approach to the cottage is along an unadopted road which is rough and uneven in places with large puddles if there has been recent rain.
- The ground surface within the lighthouse gates and in the cottage courtyard is covered with a thick layer of gravel.

Arrival & Parking Facilities

- The main gate is locked outside Lighthouse opening times. The key for the padlock and the key for the cottage are both in the keysafe.
- There is a gravel drive off to the right on the approach to the cottage. This leads round to the rear of the Lighthouse and to the cottage parking area.
- The green gate leading to the cottage is marked and is on the left. The parking area is on the right beside the hedge.
- The gate is 730mm wide
- The approach to the cottage from here is across evenly laid flagstones



Getting in (and out) of the cottage

- The front door is 630mm wide with a 20mm high wooden threshold
- Immediately inside the front door is a lobby which is 1440mm long
- The inner door is at right angles to the front door and is 760mm wide
- There is level access into the hallway through this door



Getting around the cottage

- Level flagstone flooring in the hall
- Level tiled floor in the bathroom
- Fitted carpets in the bedrooms
- Lino in the kitchen and lavatory
- Two steps up from the hallway and bathroom area to the rest of the cottage. The steps are 180mm and 190mm high.
- Main corridor in the cottage is 780mm wide at the narrowest point
- Internal door widths vary from 620mm to 800mm
- Circulation space in the hallway, bedrooms, sitting room and kitchen is good.



Hallway

- Flagstone floor
- Payphone with inductive coupler. Phone is at height of 800mm
- Clothes stand
- Doors to bathroom and utility room
- Two steps to all other rooms

Bathroom

- The bathroom is 2410mm long x 1630mm wide
- Bathroom door is 610mm wide
- Bathroom comprises lavatory, basin and bath with shower over bath
- The WC is 400mm high
- The basin is 800mm high
- The bath is 545mm high x 1680mm long x 690mm wide and has integral rails either side
- There is 790mm circulation space beside the bath



Utility Room

- Small room next to bathroom with washing machine, iron and ironing board
- Door into utility room is 670mm wide

Kitchen

- This is at the front of the cottage with views over the Channel
- The door is 710mm wide
- The kitchen has fitted units with built-in microwave, cooker and electric hob, fridge freezer and dishwasher. Height of worktop is 915mm
- Sink has lever taps
- Wooden dining table seats 4-6 people and is 755mm high with clear kneespace of 725mm underneath
- The chairs are wooden with wooden backrest and cushioned seats. The seat height is 485mm



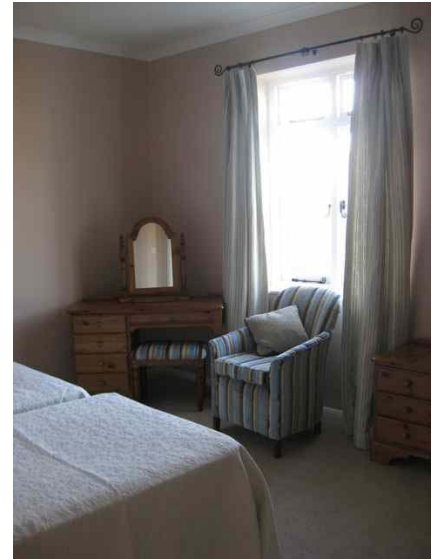
Sitting Room

- Door has 700mm clear opening width
- Views out over the Channel
- Room has a 2-seater sofa and two wing-backed armchairs all with seat height of 460mm
- Two overhead lights and one standard lamp
- Electric fire



Twin Bedroom

- Looks on to the hedge at the side of cottage with sidelong views of the coast
- Door is 800mm wide
- 1260mm circulation space beside the bed nearest the door and at the bottom of the bed
- Twin divan beds 560mm high x 1900mm long x 920mm wide
- Small bedside chest of drawers with table lamp each side
- Dressing table with stool, wardrobe, chest of drawers and armchair with seat height of 520mm



Double Bedroom

- Same side of cottage as twin bedroom but with more of a view along the coast
- Double bed 550mm high x 2000mm long x 1500mm wide
- 1350mm wide circulation space by bed on the door side and 1200mm clear space at the foot of the bed
- Desk with stool, wardrobe, chest of drawers and armchair with seat height of 520mm
- Small bedside chest of drawers with table lamp each side



Garden

- Sheltered courtyard area with gravel surface to rear of cottage.
- Wooden picnic table with integral bench seating
- Open coastland to front of cottage
- Footpath to entrance of lighthouse goes past the front of the cottage



Additional Information

- Assistance dogs are welcome at all our cottages
- In the event of a fire, it is the responsibility of the guests to evacuate themselves. Vibrating fire/smoke detectors are available if requested at time of booking. Please contact us if you have any other specific access requirements in this respect.

Facilities at all cottages

The National Trust aims to expand the list of accessible /equipment/items available at each cottage and these may include

- Cordless kettle
- Hollowfibre bedding
- Chair with armrests
- Good reading light
- Large handle vegetable peeler
- Easy tin opener
- Non-slip mat for bath/shower
- Non-slip place mat
- Easy jar opener
- Information in alternative formats (on request)

Please note that we cannot guarantee that all items will be available at the time of your visit. Please enquire at the time of booking regarding any particular requests.

Specialist equipment

Other specialist equipment such as wheelchairs, bath seats, toilet frames etc may be available for loan or purchase from the local Red Cross loan centre. Please check this out before booking the Cottage and contact us if you require further information.

<http://www.redcross.org.uk/standard.asp?id=89425>



Future Plans to improve Access to NT Holiday Cottages

We are currently in the process of writing access statements for all our holiday cottages and improving access over time for all our guests. All feedback is very helpful in informing us of ways in which we can improve access to all our cottages. We welcome any comments or ideas from you about access at this cottage and thank you for taking the time to do this. Please do this in the most convenient way for you. See contact details below or information on website.

About the Access Statement

This Access Statement is intended to provide key information about the cottage that may be particularly relevant to guests with disabilities. It is reviewed annually. Please contact us prior to booking if you would like more detailed information and we will be happy to oblige.

Phone: 0844 800 2070

Email: cottages@nationaltrust.org.uk

Access for All at the National Trust

We continue to work to improve accessibility at all our holiday cottages. We welcome comments and ideas on improving access.

Phone: 0844 800 2070

Email: cottages@nationaltrust.org.uk

January 2012