

## National Trust Cottages Access Statement

Risemoor  
Low Newton  
Northumberland  
NE66 3EP

Ref: 017012



### Introduction

- Risemoor is a 2 storey cottage approached via a single track sandy lane with vegetation either side, accessed through a padlocked farm gate (code supplied prior to stay). The cottage has a large, enclosed, mostly lawned garden to the rear with a patio and outside furniture. There is a narrow direct pedestrian access at the front of the cottage to the beach and bird hide, which is a public right of way.
- The rear garden is private and south facing and is dog proofed.

The Cottage is arranged as follows:

### Ground Floor:

- Entrance lobby with boot storage, downstairs WC with wash hand basin. Inner glassed door leading to hallway with coat rack and curtained utility storage area. Large well equipped kitchen with free standing table and seating for 6. Downstairs shower room with large cubicle and electric shower, wash hand basin and heated ladder towel rail. Living room with multi fuel stove, wooden floor and patio doors to garden. 2 armchairs and 2 double sofas with large coffee table. Open plan dining area with sea view, window seat and door to front garden / beach access. Dining table with seating for 6 and the staircase leading to:

### First Floor:

- T junction at top of stairs leading to 3 bedrooms and a family bathroom. Left; carpeted double bedroom with king sized bed, chair, chest of drawers, freestanding wardrobe and 2 bedside cabinets with lamps. Freestanding wooden towel rail. Twin bedded room with 2 single beds, one bedside cabinet with lamp, chest of drawers, chair, freestanding wardrobe and wooden towel rail. Right; large bedroom with super king bed which can be twin on request, 2 bedside cabinets with lamps, dressing table with stool, freestanding wardrobe with drawers, and wooden towel rail. Bedroom doors can be held open with doorstops supplied. Family sized bathroom with built in cupboard, WC, hand wash basin, bath with electric shower over. Non slip vinyl floor covering.

## Pre-Arrival

- See the main webpage for booking and location details.
- Please contact us prior to booking if you have any specific access requirements.
- Directions provided with booking
- Bring a torch if arriving in the dark – to unlock the gate

## Approach

- Access is via a single track sandy lane, through a farm gate with a combination padlock



## Arrival & Parking Facilities

- Parking for 2 vehicles on a level gravelled area at the front of the cottage

## Getting in (and out) of the cottage

- Small stone slab standing (4cm high) with level metal boot scraper atop, one step into the cottage 11cm high plus door lip 3cm high. Front door inward opening 790mm wide.
- Entrance porch 840mm wide
- Glass door into corridor width 700mm

## Getting around the cottage

### Ground floor:

### Kitchen



- Door width 770mm
  - Height of worktop is 930mm
  - Fitted units with wall mounted cupboards with concealed lighting underneath, freestanding table and chairs
  - Kitchen table 740mm high with clear 630mm knee space underneath
  - Six rattan chairs seat height 460mm
  - Washer/dryer, dishwasher, microwave and freestanding electric cooker, full height fridge freezer
- Oil fired boiler
  - Mixer tap
  - Quarry tiled floor
  - Two fixed pendant light fittings each with three lights

## Ground floor Shower room

Step into shower 300mm, door opening 490mm wide electric shower

- Basin height 800mm
- Door opening 740mm
- Heated full height towel rail

## Downstairs toilet

- Door 670mm
- Height 400mm and sink 300mm

## Sitting Room



- Door width 830mm
- Wooden floor and rug
- Sofa seat height 450mm, seat length 1300mm
- Armchair height 450mm and width 550mm
- Coffee table in centre 1220mm length, width 600mm and height 500mm
- Double patio doors to rear garden, door opening width 980mm
- Patio width 3000mm sandstone flags, outside wooden benches and table
- Dog proof garden with grass area to the rear approached from front via a wooden gate 1120mm width x 1000mm height
- Multi fuel stove, TV, two side tables, side table and two table lamps and two pendant lights and spot lights.

## Dining Room



- Table is 1970mm long and width 870mm and height 750mm with 620mm knee space
- Wooden dining chair seat height 490mm
- Window seat 700mm with seat cushion on (not available in winter)
- Entry from corridor 1050mm width into open plan dining room 1000mm wide
- Side door to beach 780mm wide
- One pine sideboard

## Stairs

- Width of stairs between wall and banister gap 880mm
- Total number of stairs 14
- Steps 1800mm height
- Height where beam comes across stairs (one step from top 1700mm)
- First four steps on a 90 degree turn to left then straight run up.

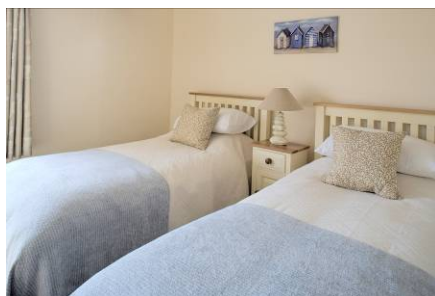
## First floor:

### Double Bedroom



- Door width 780mm
- King size bed – wooden bedstead height 500mm, length 2000mm, width 150mm
- Wardrobe, drawers with dressing table mirror two bedside cabinets and two table lamps.
- Towel rail
- One pendant light
- Chair with upholstered seat - seat height 450mm

### Twin Bedroom



- Door 780mm wide
- Two single beds – wooden bedsteads and mattress medium firm height 500mm, length 2000mm, width 1000mm
- Wooden chair 460mm seat height
- Wardrobe, chest of drawers, dressing table mirror and towel rail, one bedside table
- One pendant light and one table lamp

### Super King Bedroom



- Door 780mm wide
- One super king bed which can be two singles on request. Height 600mm, length 2000mm and width 190mm
- One wardrobe, dressing table with mirror, stool with rattan seat – height of seat 450mm, two bedside tables with table lamps
- One pendant lamp

### Bathroom



- Doorway 780mm wide
- Bath length 1650mm width 680mm and height 530mm with internal grab rails
- Sink height 800mm, width 560mm
- Shaver socket and lights over sink one either side of mirror and a central light with 3 bulbs
- Freestanding towel rail, and storage
- Height of toilet is 400mm
- Electric shower

## **Garden**

- Rear garden good sized grassed area and patio with outside seating. Enclosed with a dog proof fence accessed via side gate.
- Front small uneven grassed area and rockery, fenced off with a low open fence and gate to beach.

## **Additional Information**

- Assistance dogs are welcome at all our cottages
- Up to 2 well behaved dogs welcome
- In the event of a fire, it is the responsibility of the guests to evacuate themselves. Vibrating fire/smoke detectors are available if requested at time of booking. Please contact us if you have any other specific access requirements in this respect.

## **Facilities at all cottages**

The National Trust aims to expand the list of accessible /equipment/items available at each cottage and these may include

- Cordless kettle
- Hollowfibre bedding
- Chair with armrests
- Good reading light
- Large handle vegetable peeler
- Easy tin opener
- Non-slip mat for bath/shower
- Non-slip place mat
- Easy jar opener
- Information in alternative formats (on request)

Please note that we cannot guarantee that all items will be available at the time of your visit. Please enquire at the time of booking regarding any particular requests.

## **Specialist equipment**

Other specialist equipment such as wheelchairs, bath seats, toilet frames etc may be available for loan or purchase from the local Red Cross loan centre. Please check this out before booking the Cottage and contact us if you require further information.

<http://www.redcross.org.uk/standard.asp?id=89425>

## **Future Plans to improve Access to NT Holiday Cottages**

- We are currently in the process of writing access statements for all our holiday cottages and improving access over time for all our guests. All feedback is very helpful in informing us of ways in which we can improve access to all our cottages. We welcome any comments or ideas from you about access at this cottage and thank you for taking the time to do this. Please do this in the most convenient way for you. See contact details below or information on website.

### **About the Access Statement**

- This Access Statement is intended to provide key information about the cottage that may be particularly relevant to guests with disabilities. Please contact us prior to booking if you would like information that is more specific and we will be happy to oblige.

Email: [cottages@nationaltrust.org.uk](mailto:cottages@nationaltrust.org.uk)

Phone: 0844 8002070

### **Access for All at the National Trust**

- The Access for All office works to improve access at all National Trust cottages and properties. The office welcomes comments and ideas on improving access.

Phone: 01793 818531

Email: [accessforall@nationaltrust.org.uk](mailto:accessforall@nationaltrust.org.uk)

Sept 2012