

Cottage Ref:011059

**Nanceglos House**

Trengwainton

PENZANCE

Cornwall

**Introduction**

- Nanceglos is a large, stone built house on the boundary of the garden at Trengwainton.
- Parquet, Tile, Carpet and vinyl floors.
- Gas central heating via radiators.
- Enclosed garden with picnic table and permanent barbeque.

**Pre-Arrival**

- See the main webpage for booking and location details.
- Please contact us prior to booking if you have any specific access requirements.
- Directions provided with booking

## Arrival & Parking Facilities



- Nanceglos House is reached along an unmade lane past the public car park for the well signposted Trengwainton Garden. The parking is to the front of the cottage on left side. There is undesignated space for four vehicles.

## Getting in (and out) of the cottage



- From the parking area there is a short walk to the “picket” front gate 1,070mm wide
- A 200mm stone step drops down to the gravel path that leads to the front door. Three stone steps, 100mm, 190mm and 150mm up to solid wooden, “stable” front door with tiled canopy above. Threshold step 190mm high.
- Combination key safe on wall to right of front door.
- Outside light but recommended bringing a torch.

## Getting around the cottage

### Ground floor:

- Front door into porch. Door to lounge and door to dining room with stairway to first floor and doorway to corridor. Corridor has five doors off plus a partition door. Doors lead to kitchen, shower room, twin bedroom, utility room and rear of property.

### First floor:

- Stairs up from dining room to landing. Six doors off to bathroom, W.C., twin, single and two double bedrooms.

## Porch

- Wooden "Stable" door 1,000mm wide.
- Terracotta tiled floor.
- 1 ceiling light.

## Lounge



- Door 1,030mm wide, 20mm high threshold.
- Large, uneven quarry tiled flooring. Central rug.
- 4 large windows to front and side of property overlooking garden.
- Vaulted roof.
- 4 spot lights, 3 double wall lights, 2 table lamps and a standard up lighter lamp.
- Log burner.
- TV DVD player.
- 3 - Three seater sofas, 450mm seat height. 2 padded easy chairs 450mm seat height. 2 arm chairs 400mm seat height. Wooden chair 450mm seat height.
- Wooden circular table 750mm high, knee clearance 630mm.
- Wooden chest 530mm high.
- Side tables 600mm and 380mm high.



## Dining Room

- Door, glass panelled, 800mm wide, wooden threshold.
- Parquet flooring.
- 2 windows, one to front, overlooking garden and one to rear of property.
- 6 spot lights, 2 table lamps and an emergency lamp.
- Non-functioning, fireplace.
- Wooden table 780mm high, knee clearance 580mm.
- 7 wooden chairs 440mm seat height.
- Side table 460 mm high.
- Wooden chest of drawers 850mm high, 1,800mm long by 650mm wide.
- Stairway to first floor. 2 steps, 110mm high, up to doorway to inner corridor.

## Inner Corridor (two parts)

- Open doorway, 800mm wide, from Dining room.
- Parquet flooring to 1<sup>st</sup> part. Vinyl flooring with 1 step partway, 190mm high in 2<sup>nd</sup> part.
- 1 window in 1<sup>st</sup> and 2 windows in 2<sup>nd</sup> part.
- 2 ceiling lights.
- Door to kitchen and door, 890mm wide to 2<sup>nd</sup> part of corridor.
- Coat stand.
- Doors to utility room, bedroom and rear (step up 40mm high to back door, 770mm wide).

## Kitchen



## **Kitchen contd.**

- Door, 720mm wide, from Inner corridor.
- Vinyl flooring.
- 8 spotlights.
- 2 windows. Floor cupboards and drawers under 930mm worktop.
- Floor cupboards and drawers under 930mm worktop.
- Fitted cupboards.
- Single drainer sink with duo tap.
- Electric cooker with ceramic hob.
- Cooker extractor hood with light.
- Fridge/freezer, dishwasher, cordless kettle, micro wave oven, toaster and CD/radio player.
- Table 760mm high, knee clearance 600mm.
- 4 wooden chairs 440mm seat height.
- 2 stools 510mm seat height.
- Door, 760mm wide, to shower room.

## **Shower Room**



- Vinyl flooring.
- 1 ceiling light.
- 1 window.
- Shower cubicle, 250mm high step, non-electric shower. Door 590mm wide.
- Wash basin 790mm high.
- W.C. 400mm seat height.
- Mirror with Shaver socket/light above.
- Electric heated towel rail.
- Door to 2<sup>nd</sup> part of inner corridor 890mm wide.
- Door to lower Twin bedroom.

## **Twin Bedroom (ground floor)**



- Wooden door from shower room, 700mm wide.
- Fitted carpet flooring.
- 1 ceiling light and 2 bedside lamps.
- 2 windows with seats below, 530mm seat height.
- 2 single beds 600mm high, 2000mm long and 1000mm wide.
- 2 bedside tables 800mm high.
- Wooden dressing table 920mm high.
- Open clothes hanging area 1,380mm high.
- 1 convector heater.
- Door to 2<sup>nd</sup> part of inner corridor 800mm wide.

## **Utility Room**

- Door 730mm wide, from 2<sup>nd</sup> part of inner corridor.
- Vinyl flooring.
- 1 ceiling light.
- 1 window.
- Fridge/freezer, washing machine, condenser tumble dryer.

## **Stairway to First floor**

- Fitted carpet flooring.
- 2 steps to small landing 170mm and 190mm high. 12 further steps, 170mm high to landing.
- Wooden banister rail.

## Landing



- Stairway from dining room.
- Fitted carpet flooring.
- 3 windows.
- 4 ceiling lights.
- 3 steps up along landing, all 180mm high.
- 6 Doors off to En-suite bedroom, Double bedroom, Twin bedroom, Single bedroom, Bathroom and Toilet.

## Double Bedroom with en-suite

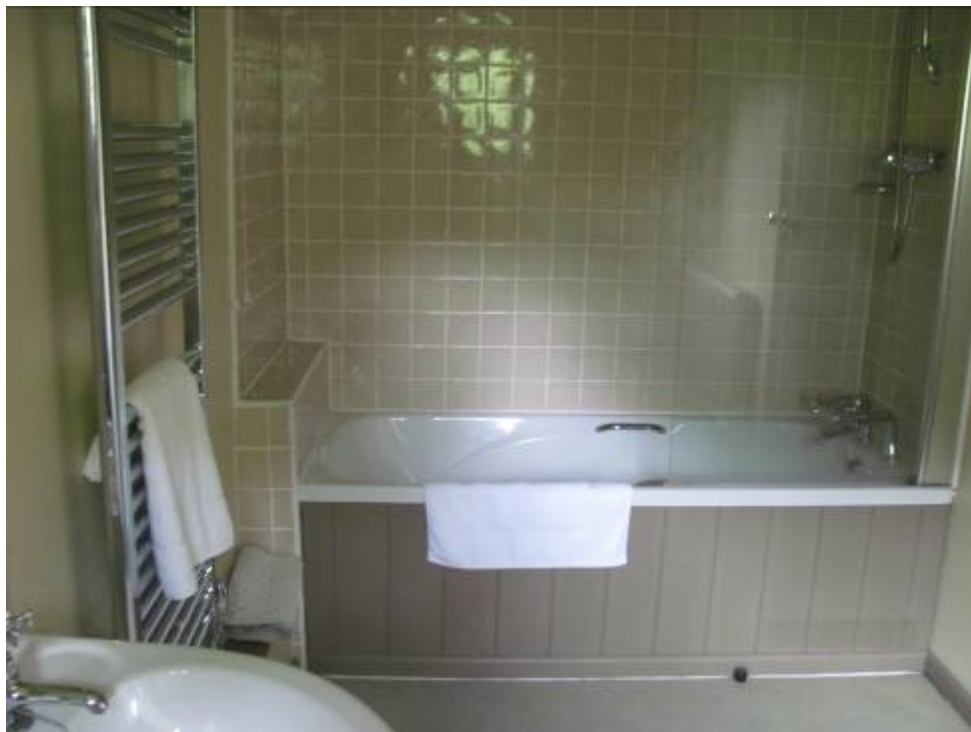


- Door from landing, 640mm wide.
- Fitted carpet flooring.
- 1 window.
- 1 ceiling light and 2 bedside lamps.
- Convector heater
- 1 contemporary metal, King bedstead, 600mm high, 2,000mm long and 1,500mm wide.

### **Double en-suite bedroom contd.**

- 2 wooden bedside cabinets 740mm high
- Wooden chest drawers 800mm high.
- Built in wooden wardrobe
- Door to en-suite 730mm wide.

### **Double en-suite**



- Vinyl flooring.
- 1 window.
- 2 wall lights.
- Heated towel rail.
- W.C. 420mm high.
- Washbasin 790mm high
- Bath 510mm high, 1,650mm long, 680mm wide with 2 integral grab rails.
- Non-electric shower over bath with glass side screen.
- Wall mirror with light and shaver point.



## Double Bedroom



- Door from landing 720mm wide.
- Fitted carpet flooring.
- 2 windows.
- 1 ceiling light and 2 bedside lamps.
- 1 double bed 600mm high, 2,000mm long and 1,350mm wide.
- Wooden bedside cabinet 800mm high.
- Round table 740mm high.
- Dressing table 910mm high.
- Wooden blanket chest 440mm high, 940mm long and 470mm wide.
- Wardrobe 2,030mm high.
- Wooden chair 430mm seat height.

## Twin Bedroom



- Door from landing 640mm wide.
- Fitted carpet flooring.
- 1 window.
- 1 ceiling light and 1 bedside lamp.

## **Twin Bedroom contd.**

- 2 contemporary metal single bedsteads 600mm high, 2,000mm long and 1,000mm wide.
- Wooden bedside cabinet 880mm high.
- Wooden chest of drawers 840mm high.
- Recessed clothes hanging area 1,620mm high.

## **Single Bedroom**



- Door from landing 640mm wide.
- Fitted carpet flooring.
- 1 window.
- 1 ceiling light and 1 bedside lamp.
- Single bed 600mm high, 2,000mm long and 1,000mm wide.
- Wooden bedside cabinet 760mm high.
- Wooden dressing table 810mm high.
- Chair 470mm seat height.
- Clothes hanging pole 1,700mm high.

## Bathroom:



- Wooden door 650mm wide.
- Vinyl flooring.
- 2 windows. Extractor fan.
- Ceiling light. Wall mirror with light and shaver point.
- Heated towel rail.
- Washbasin 790mm high
- Bath 520mm high, 1,650mm long, 680mm wide with 2 integral grab rails.
- Non-electric shower over bath with safety glass screen.

## Toilet:



- Wooden door 570mm wide.
- Vinyl flooring.
- 2 windows.



- Ceiling light.
- Extractor fan.
- WC 410mm high.

## Garden



Gravel paths around cottage with some uneven steps. Grass lawn areas on different levels. Block built barbeque (*under construction in picture*) Picnic table 390mm seat height, knee clearance 660mm. 6 steps at rear of cottage to concreted area. 2 side gates and outside lights.

## Additional Information

- Assistance dogs are welcome at all our cottages
- In the event of a fire, it is the responsibility of the guests to evacuate themselves. Vibrating fire/smoke detectors are available if requested at time of booking. Please contact us if you have any other specific access requirements in this respect.

## Facilities at all cottages

In addition to the standard equipment and facilities, each cottage is equipped with the following:





- Cordless kettle
- Chair with armrests in dining room and living room.
- Good reading light
- Large handle vegetable peeler
- Easy tin opener
- Non-slip mat for bath/shower
- Non-slip place mat
- Easy jar opener
- Information in alternative formats (on request)

We aim to provide these items in all cottages but please check when booking as to their availability and to check if new items have been added to the list.

### **Specialist equipment**

Other specialist equipment such as wheelchairs, bath seats, toilet frames etc may be available for loan or purchase from the local Red Cross loan centre. Please check this out before booking the Cottage and contact us if you require further information.

<http://www.redcross.org.uk/standard.asp?id=89425>

### **Future Plans to improve Access to NT Holiday Cottages**

- We are currently in the process of writing access statements for all our holiday cottages and improving access over time for all our guests. All feedback is very helpful in informing us of ways in which we can improve access to all our cottages. We welcome any comments or ideas from you about access at this cottage and thank you for taking the time to do this. Please do this in the most convenient way for you. See contact details below or information on website.

### **About the Access Statement**

- This Access Statement is intended to provide key information about the cottage that may be particularly relevant to guests with disabilities. Please contact us prior to booking if you would like information that is more specific and we will be happy to oblige.

Email: [cottages@nationaltrust.org.uk](mailto:cottages@nationaltrust.org.uk)

Phone: 0844 8002070

### **Access for All at the National Trust**

- The Access for All office works to improve access at all National Trust cottages and properties. The office welcomes comments and ideas on improving access.

Phone: 01793 818531

Email: [accessforall@nationaltrust.org.uk](mailto:accessforall@nationaltrust.org.uk)

July 2011