

# National Trust

## National Trust Cottages Access



Pont Farm House  
Pont  
Lanteglos by Fowey  
PL23 1NQ  
Ref: 011016

### Introduction

- Pont Farm House is a two storey cottage located on the creek side at Pont Quay.
- The hall, kitchen/diner, sitting room and lavatory are on the ground floor.
- The bedrooms and bathroom are on the first floor.
- Most of the rooms enjoy views over the creek.
- The cottage has night storage heating, Rointe electric heater, a multi fuel stove and portable convector heaters.
- The land immediately around the cottage is reasonably flat.

The Cottage is arranged as follows:

Hall, sitting room, kitchen/diner and lavatory are all on ground level. The bathroom, double bedroom, twin bedroom and single bedroom are all on the first floor.

### Pre-Arrival

- See the main webpage for booking and location details.
- Please contact us prior to booking if you have any specific access requirements.
- Directions provided with booking.
- Please bring a torch.

### Approach

- The cottage is approached via country lanes and sign posted Polruan then Pont.
- A rough, 100m long track leads to the cottage. At the roadside is a sign: "Pont Creek Farm – Residents' Vehicles Only".
- There is a farm gate across the end of the track which should be kept closed.



Parking area



Quayside looking to entrance track

## Arrival & Parking Facilities

- Parking is on a firm uneven gravelled area at the top of a short slope at the side of the quay. It is approximately 35m from the cottage.
- This slopes onto the uneven gravelled quayside which reaches the front of the cottage.
- There are 2 options for entering the cottage both via stone stiles.
- Option 1 (photo below) - There is a gate with 10cm step which leads onto an uneven stone/concrete path in front of the cottage. There is then a stone stile before the front door with 5 uneven steps each ranging from 13 – 25cm high. During high tides a flood board will be fixed in place at this entrance and you will need to access via option 2.
- Option 2 – There are 7 uneven stone steps ranging from 18cm – 25cm in height crossing over a stile.
- The key safe is on the left hand side of the door at a height of 168cm ffl (from floor level). It is operated by a combination lock mechanism.
- There is an outside light over entrance and the path/quayside.
- At times the tide will cover the quayside.



Entrance gate where a flood board is fixed on high tides



Option 1 - Stone stile



Option 1 –stone stile

## Option 2 – 2nd stone stile



### Getting in (and out) of the cottage

- The main door has a clear opening width of 80cm.
- There is a 16cm stone step and 8cm wooden threshold from outside into the hall.
- There are no other doors leading outside.



Entrance

## Getting around the cottage

- There is a wooden floor in the kitchen/diner and sitting room.
- There is carpet on the stairs, landing and bedrooms.
- There is a vinyl floor covering in the hall, lavatory and bathroom.
- There are 10 stairs with a wooden hand rail rising from the entrance hall to the first floor
- Internal doors clear opening widths range of 64-73cm.

## Ground Floor

### Hall

- The entrance door leads directly into a small hall.
- Doors to sitting room, kitchen/diner and lavatory.
- Stairs rise to the first floor.
- There is a drop-in wooden stairgate at the bottom of the stairs and a fixed stair gate at the top.
- 



### Lavatory

- The WC is 42cm high.
- The basin is 80cm high.
- There are 3 recessed ceiling lights and a mirror with integrated lights and shaver socket
- There is an electric towel rail.



## Sitting Room

- There are windows to the front and side overlooking the quay and creek.
- There are three double wall lights, a standard lamp and two table lamps.
- There are three sofas with a seat height of 47cm.
- There is a wooden chest/coffee table which is 51cm high.
- There is a carver chair with a high back with a seat height of 43cm. There is a TV and DVD player.





## Kitchen/Diner

- There is a dining table and five chairs
- The table has knee clearance of 58 cm. The dining chairs are 47 cm high.
- The height of the worktop is 90cm.
- There is an electric cooker with controls to the front and top which is 87 cm high.
- There is a dishwasher, fridge/freezer, washer/dryer, microwave, cordless kettle and toaster.
- There are eight spotlights and cupboard lighting.
- There is a window to the front overlooking the quay.

## First Floor

### Double Bedroom

- Door from landing next to bathroom.
- There is a centralised double bed 182cm wide x 200cm long x 68cm high which can be separated to singles on request
- The clearance underneath the bed is 5cm. There is a coffer at the bottom of the bed which is 70cm high.
- There are two bedside tables 74cm & 76cm high with table lamps.
- The chest of drawers is 105cm high with a mirror.
- There is a wing back chair with cushion, the seat height is 46cm.
- There is also a central ceiling light.
- There is a wardrobe with a clothes rail at 160cm from floor level.
- There are three windows overlooking the creek and quay.





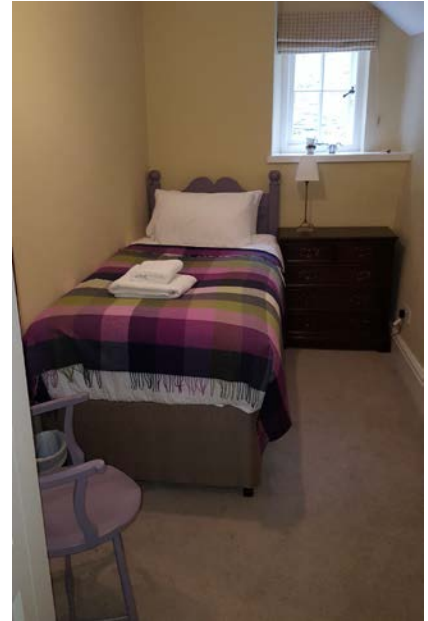
## Twin Bedroom

- Door from landing.
- There are two single beds 89cm wide x 193cm long x 72cm high.
- The clearance underneath the beds is 5cm.
- The beds are separated with a chest of drawers which is 100cm high. There are two table lamps.
- There is also a central ceiling light.
- There is a wardrobe with a clothes rail at 160cm from floor level.
- There is a wooden chair, the seat of which is 47cm high.
- There is a window overlooking the creek and a high window looking across to Pont Creek Cottage.
- There is a cupboard housing the hot water tank with slatted shelving above.



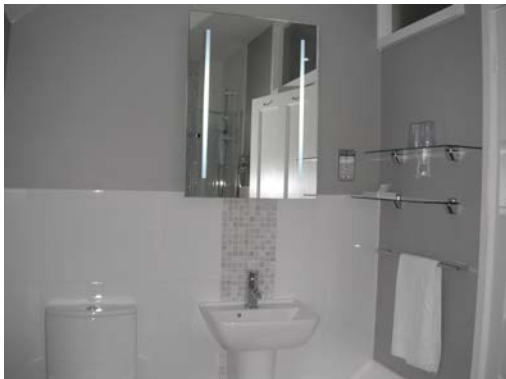
## Single Bedroom

- Door from landing.
- There is a single bed 91cm wide x 193cm long x 72cm high.
- The clearance underneath the bed is 5cm.
- There is a chest of drawers next to the bed (78cm high) with a table lamp.
- There is also a central ceiling light.
- There is a wardrobe with a clothes rail at 158cm from floor level.
- There is a chair with a seat height of 36cm.



## Bathroom

- The bathroom is off the landing.
- The bath is a standard length with a wider part at the shower end. It has an electric shower overhead.
- The WC is 42cm high.
- The basin is 80cm high.
- There are three spot lights in the ceiling and a light in the mirror.
- There is an electric towel rail.





## Laundry Room

- There is a washer/dryer and a supply of briquettes in an out building approximately 20m from the cottage.
- There are two steps between 8-15cm high and a 2cm wooden step into the laundry room.
- The floor surface of the communal laundry room is concrete.

## Garden

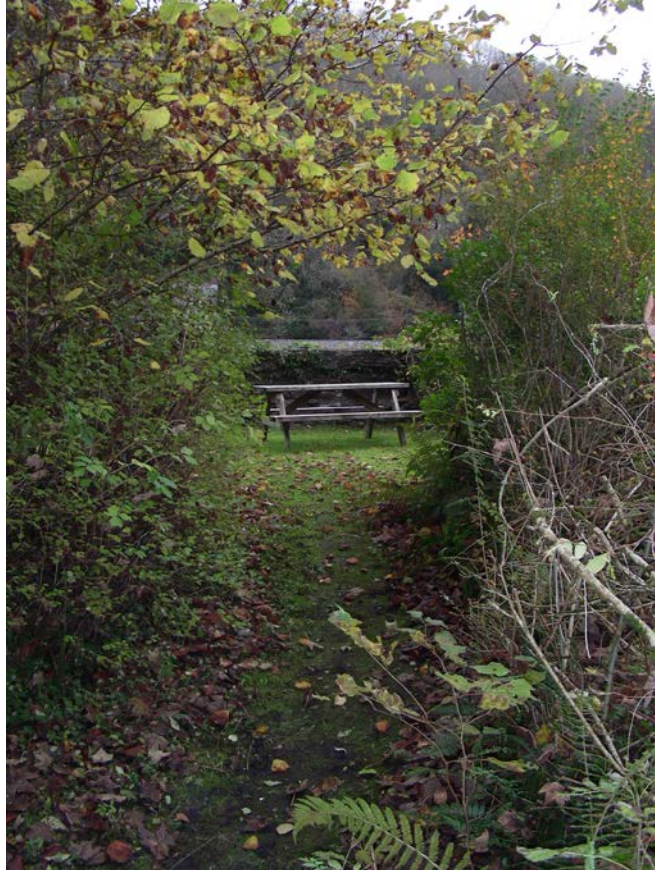
- The garden is on top of the lime kiln at the rear of the cottage and is approached from the car parking area. It is approximately 17m from the car park.
- There are 7 uneven stone/grass steps to the garden ranging from 12-33cm high with a hand rail. It is a sloping path.
- The area is small, enclosed with grass.
- There is a table with fixed bench seating.



Steps and path to garden



Garden area



Garden area

## Additional Information

- Assistance dogs are welcome at all our cottages
- In the event of a fire, it is the responsibility of the guests to evacuate themselves. Vibrating fire/smoke detectors are available if requested at time of booking. Please contact us if you have any other specific access requirements in this respect.

## Facilities at all cottages

The National Trust aims to expand the list of accessible /equipment/items available at each cottage and these may include

Cordless kettle  
Hollowfibre bedding  
Chair with armrests  
Good reading light  
Large handle vegetable peeler  
Easy tin opener  
Non-slip mat for bath/shower  
Non-slip place mat  
Easy jar opener  
Information in alternative formats (on request)

Please note that we cannot guarantee that all items will be available at the time of your visit. Please enquire at the time of booking regarding any particular requests.

## Specialist equipment

Other specialist equipment such as wheelchairs, bath seats, toilet frames etc may be available for loan or purchase from the local Red Cross loan centre. Please check this out before booking the Cottage and contact us if you require further information.

<http://www.redcross.org.uk/standard.asp?id=89425>

## Future Plans to improve Access to NT Holiday Cottages

- We are currently in the process of writing access statements for all our holiday cottages and improving access over time for all our guests. All feedback is very helpful in informing us of ways in which we can improve access to all our cottages. We welcome any comments or ideas from you about access at this cottage and thank you for taking the time to do this. Please do this in the most convenient way for you. See contact details below or information on website.

## About the Access Statement

- This Access Statement is intended to provide key information about the cottage that may be particularly relevant to guests with disabilities. Please contact us prior to booking if you would like information that is more specific and we will be happy to oblige.

Email: [cottages@nationaltrust.org.uk](mailto:cottages@nationaltrust.org.uk)

Phone: 0844 8002070



## **Access for All at the National Trust**

- The Access for All office works to improve access at all National Trust cottages and properties. The office welcomes comments and ideas on improving access.

Phone: 01793 818531

Email: [accessforall@nationaltrust.org.uk](mailto:accessforall@nationaltrust.org.uk)

Date November 2017.