

National Trust Cottages Access Statement

The Bothy,
Powis Castle,
Welshpool,
Powys,
North Wales



Ref: 008014

Introduction

- . Beautiful Edwardian cottage in the heart of magnificent gardens surrounding Powis Castle
- . Detached
- . The cottage can accommodate seven people plus a cot
- . The cottage has gas central heating
- . Wood-burning stove in sitting room
- . Small patio area within the main gardens where you can sit and enjoy glorious views
- . Guests have access to the Castle gardens during the day

The accommodation is arranged as follows:-

Ground Floor

Hall, shower room with separate lavatory, sitting/ dining room, kitchen with dining table.

First Floor

Four bedrooms (1 family room with walk-through adjoining single bedroom and en-suite shower room with lavatory, plus two twin bedrooms, bathroom with roll-top bath.

Pre-Arrival

- . See the main webpage for booking and location details
- . Please contact us prior to booking if you have any specific access requirements
- . Directions provided with booking
- . Bring torch if arriving in dark.

Approach

. The cottage is set within the Castle grounds. The approach to the cottage is through the grounds of the castle itself. Guests will need to follow the instructions sent with the booking information with care.

Arrival and Parking Facilities

. You can load and unload your car outside the cottage where there is a parking area.

. The keysafe is in a black box outside of the front door and on the right (as facing). It is operated by a push button mechanism. A torch is recommended especially if arriving in the dark as the numbers on the box can be difficult to see. The key is returned to the keysafe on departure.

Getting in and out of the cottage

- . There are 2 steps into the cottage.
- . These are 130mm, 150mm respectively.
- . The door has a clear opening width of 1040mm.



Front Door



Two steps into cottage

. Through the front door there are a further 2 steps up into the corridor. These are 210mm and 220mm respectively. There is a handrail to the right at a height of 1000mm.

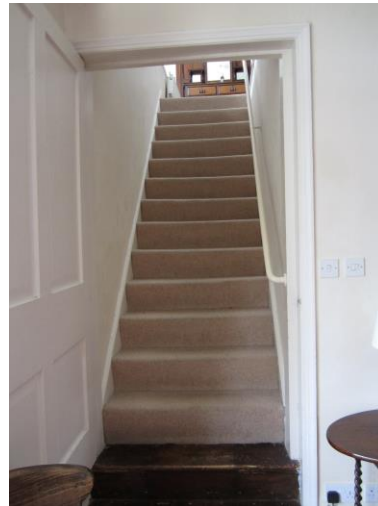


Getting around the cottage

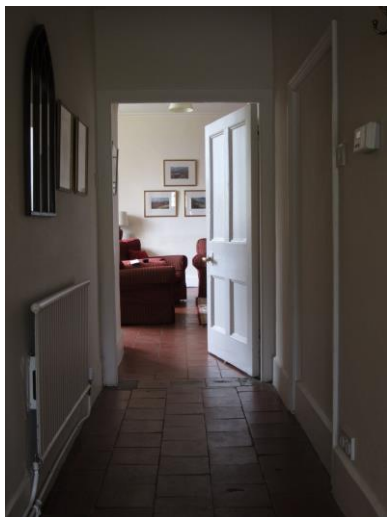
- . There are a further two steps into the kitchen.
- . Internal door width to lounge is 990mm. To kitchen is 790mm. To stairs door is 1070mm.
- . All floors on the ground floor are quarry tiled.
- . Lounge with rug which has a non-slip backing
- . The kitchen has quarry tiled floors.
- . Steep staircase (930mm wide) with each step being 200mm high and the handrail on right hand side at 810mm. First two steps are wooden and the rest are carpeted.



Flooring from hall to lounge



Staircase with handrail



The corridor from the front door is 1200mm wide.

Shower Room

- . Quarry tiled floor
- . Electric shower with step into at a height of 280mm.



WC and Basin

- . WC with a height of 420mm
- . Corner basin with a height of 820mm



Sitting Room

- . There are two striped sofas at a height of 370mm
- . There is a striped chair at a height of 400mm
- . There is a green winged chair at a height of 460mm



One of the striped sofas



Striped arm chair



Green winged chair

Dining Area

- . There is a dining table with six chairs two have arms. Each chair has a seat height of 460mm. The two carver chairs are the same.
- . The dining table is 760mm high with a clear height underneath of 740mm.



Carver chair



Dining table and chairs

Kitchen

- . Directly off sitting room
- . There are two steps up into the kitchen.
- . The worktops are at a height of 930mm
- . Electric cooker with ceramic hob
- . Dishwasher, fridge/freezer, washer/dryer
- . Microwave, kettle, toaster



Kitchen work units



Dining table in kitchen



View of breakfast bar under windows



Sink and dishwasher under sink.

Dining Table in Kitchen

- . Wooden table and chairs
- . Height of table is 780mm with maximum clearance underneath of 720mm
- . Wooden dining chairs have seat height of 450mm.
- . Breakfast bar at window with a height of 900mm.
- . Wooden stools with a height of 780mm
- . Good natural light from window.



Dining Area in kitchen

First Floor:

- . The landing and stairs are carpeted. All other floors are wooden floorboards with rugs in bedrooms with non-slip backing
- . Good natural light from all windows
- . All internal doors upstairs have a clear opening width of 710mm

Bathroom and WC

- . Roll top bath with mixer tap shower attachment
- . Basin is 850mm high
- . WC is 440mm high
- . Bath is 530 high x 1700mm x 680mm wide
- . 1470mm between edge of basin and bath



Twin Bedroom 1

- . Beds are 3'6" wide and 6'2" long
- . Antique brass and iron beds. 680mm high.
- . Clear space under bed is 350mm.
- . Bedside table and light at each bed.
- . Wardrobe.



Twin Bedroom 2

- . Beds are 3'6" wide and 6'2" long
- . Antique brass and iron beds. 680mm high.
- . Clear space under bed is 350mm.
- . Bedside table and light at each bed.
- . Wardrobe.
- . This room has a large space between the beds and 2 entry doors



Double Bedroom

- . Double bed is 700mm high. Antique brass and iron bed.
- . 4'6" x 6'2"
- . Clear space under bed is 350mm
- . Bedside lights with adjustable heads in addition to ceiling light
- . Built in wardrobe
- . Full length mirror
- . Good natural lighting
- . Walkthrough into single bedroom and en suite shower room



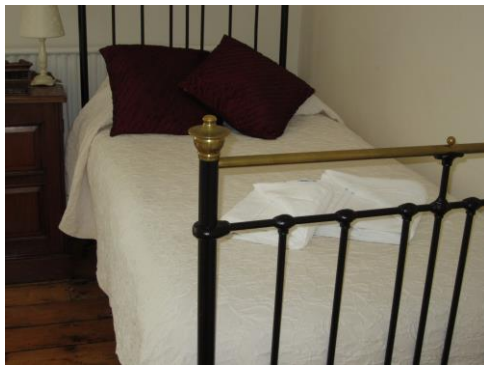
Double bed



Wooden floor with rug

Single Bedroom

- . Beds are 3'6" wide and 6'2" long
- . Antique brass and iron beds. 680mm high.
- . Clear space under bed is 350mm.
- . Bedside table and light at each bed.
- . Wardrobe.



Single bed



Wooden floors

En Suite Shower Room

- . The WC height is 410mm
- . The basin height is 810mm
- . There is a small step into the electric shower at 140mm



Basin with shower in background

Additional Information

- . Assistance dogs are welcome at all our cottages
- . Up to 2 dogs are allowed at this cottage
- . There is a TV with free sat and a DVD player at this cottage
- . In the event of a fire, it is the responsibility of the guests to evacuate themselves. Please contact us if you require any specific access requirements in this respect.

Facilities at all cottages

The National Trust aims to expand the list of accessible / equipment / items available at each cottage and these may include

- . Cordless kettle
- . Chair with armrests
- . Good reading light
- . Large handle vegetable peeler
- . Easy tin opener
- . Non-slip mat for bath/shower
- . Non-slip place mat
- . Easy jar opener
- . Information in alternative formats (on request)

Please note that we cannot guarantee that all items will be available at the time of your visit. Please enquire at the time of booking regarding any particular requests.

Specialist Equipment

Other specialist equipment such as wheelchairs, bath seats, toilet frames and commodes etc may be available for loan or purchase from the local Red Cross loan centre. Please check this out before booking the cottage and contact us if you require further information.

<http://www.redcross.org.uk/standard.asp?id=89425>

Future plans to improve access to NT Holiday cottages

We are currently in the process of writing access statements for all our holiday cottages and improving access over time for all our guests. All feedback is very helpful in informing us of ways in which we can improve access to all our cottages. We welcome any comments or ideas from you about access at this cottage and thank you for taking the time to do this. Please do this in the most convenient way for you. See main web pages for details.

About the Access Statement

This access statement is intended to provide key information about the cottage that may be particularly relevant to guests with disabilities. Please contact us prior to booking if you would like information that is more specific and we will be happy to oblige.

Email: cottages@nationaltrust.org.uk

Phone 0844 8002070

Access for All at the National Trust

The access for all office works to improve access at all National Trust cottages and properties. The office welcomes comments and ideas on improving access.

Phone: 01793 817634

Email: accessforall@nationaltrust.org.uk

July 2014