

Cottage Ref: 011025

Quay Cottage

Durgan
Mawnan Smith
FALMOUTH
Cornwall

**Introduction**

- Quay Cottage is a traditional stone built village cottage. It is situated on the quay in Durgan and has far reaching, southerly, views of the Helford River from the front.
- The Cottage is arranged as follows:

Ground Floor:

- Kitchen/ Lounge/Dining room and Laundry/Cloak room.

First Floor:

- Twin Bedroom, Single Bedroom and Bathroom.

Pre-Arrival

- See the main webpage for booking and location details.
- Please contact us prior to booking if you have any specific access requirements.
- Directions provided with booking.

Arrival & Parking Facilities



- The semi detached, cottage is located in the hamlet of Durgan, on the northern shore of the Helford River, just outside the village of Mawnan Smith. The lane from the main road down to Durgan is single track and the cottage is the second one on the left. The parking area is behind the buildings on the right and is clearly marked for Quay Cottage.

Getting in (and out) of the cottage



- From the parking space head down towards the river and, on the right, at the top of the slipway, there is a picket entrance gate to the cottage front garden. A path leads from this gate along the front of the cottage and round to the west side where the entrance door is.
- The combination key safe for the entrance door is on the wall to the right of the door.
- There is an outside light but it is recommended to bring a torch to set the correct lock combination on arrival. Keys to be returned to safe on final departure.

Getting around the cottage

Ground floor:

- Solid wooden entrance door, Stable type, opens inwards into open plan lounge/dining room/kitchen. Solid wooden door off, opens inwards, to laundry/cloak room.
- Stairway up to first floor landing.

First floor:

- Stairway from the ground floor onto landing. Three solid wooden doors off, one to bathroom and other two to twin and single bedrooms. All doors open inwards.

Lounge/Dining room/Kitchen – Dual aspect.



Lounge Area

- 770mm wide, solid wooden, stable, front door opens inwards, into lounge area.
- Slate tiled flooring with central hessian rug.
- Rointe heater.Wood Burner.
- Ceiling light. Table lamp. Standard lamp.
- Window, to front, (1,100mm w x 1,400mm H) with seat below (530mm seat H).
- Two-seater settees (440mm seat H).
- Pair of wing back chairs (440mm seat H).
- Storage box (740mm W x 430mm D x 400mm H).
- T.V., DVD player.
- Micro Radio/CD player.
- Stairway to first floor landing.
- Solid wooden door off to laundry/cloak room.

Kitchen/Dining Area

- Slate tiled flooring.
- Two ceiling lights. Two under cupboard strip lights.
- Window, with wooden blinds, to rear aspect (850mm W x 1,500mm H) with seat below (510mm seat H).
- Pine “kitchen” table (590mm W x 1,220mm L x 580mm knee H).
- Three wooden “kitchen” chairs (450mm seat H).
- Kitchen floor cupboards with drawers under 900mm High worktops.
- Wall cupboards (480mm H) above worktop.
- Fridge/ Freezer, Microwave oven, Toaster and kettle.
- Electric cooker with ceramic hob.

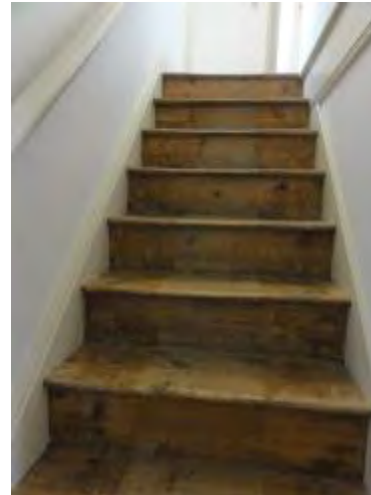
Laundry/Cloak room – Single aspect.



- 580mm wide, solid wooden door opens inwards, from lounge area.
- Vinyl flooring.
- Ceiling light. Emergency re-chargeable torch.

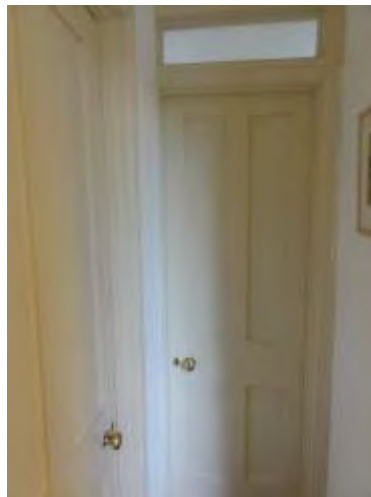
- Window, with deep sill, to rear, (250mm w x 1,100mm H).
- Rointe Heater.
- W.C. (450mm seat H).
- Wash basin (780mm H).
- Washing machineworktop cover above and tumble drier on top.
- Wall mounted coat rack with 6 hooks.

Stairway to first floor.



- Turning stairway from lounge to first floor landing.
- 13 Solid wooden steps (800mm W x 200mm H). First 4 are narrow turning type.
- Handrail on one side (900mm H).
- Ceiling light on 2-way switch.

First Floor Landing – Single aspect.



- Wooden floorboards flooring.
- Window, with deep sill, to west side, (500mm w x 1,200mm H). Internal pine shutters.
- Three solid wooden doors off. One to bathroom, one to twin bedroom and other to single bedroom. All opening inwards.

Twin Bedroom – Single aspect.

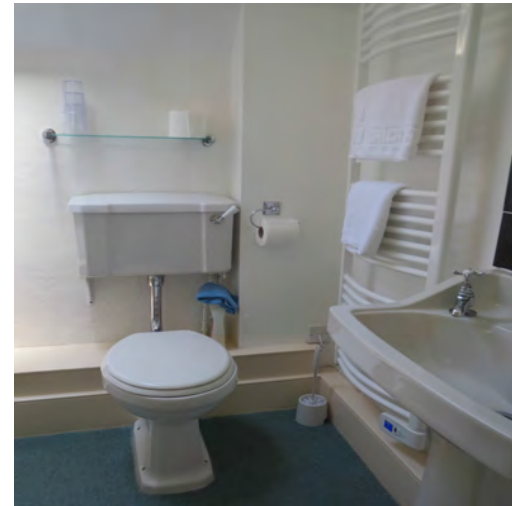
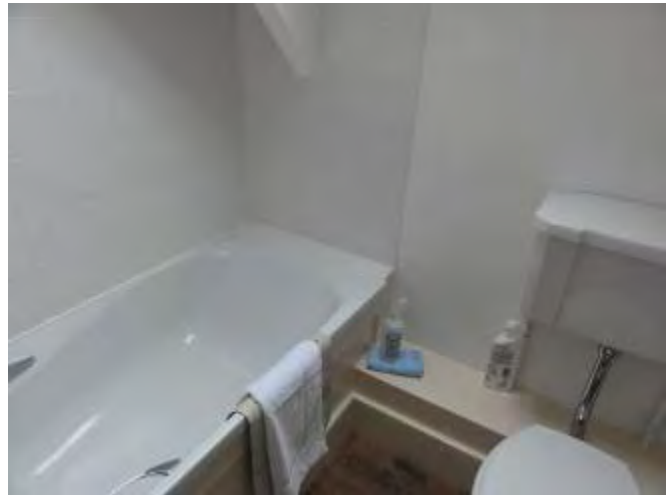


- 730mm wide doorway from landing.
- Wooden floorboards flooring with hessian rug.
- Ceiling light. Pair of table lamps and an emergency, re-chargeable torch.
- Rointe Heater.
- Window, with deep sill, to front aspect (800mm W x 1,200mm H).
- Built-in wardrobe (1,000mm W).
- Wooden “kitchen” chair (450mm seat H).
- Pine chest of drawers “2 over 3” (940mm W x 440mm D x 850mm H).
- Pair of bedside cabinets (360mm W x 280mm D x 640mm H)
- Pair of contemporary, single wooden bedsteads -zip link can be made into double(each 1,000mm W x 2,000mm L x 600mm H).



- 600mm wide doorway from landing with frosted glazed panel above.
- Wooden floorboards flooring with hessian rug.
- Ceiling light. One table lamp.
- Rointe Heater.
- Window, with deep sill, to rear aspect (800mm W x 1,000mm H).
- Built-in wardrobe (720mm W).
- Bedside cabinet (350mm W x 280mm D x 640 H).
- Pine chest of three drawers (900mm W x 380mm D x 750mm H).
- Single bed (1,000mm W x 2,000mm L x 600mm H).

Bathroom.



- 680mm wide doorway from landing.
- Wooden floorboards flooring.
- Two spotlights. Mirror with light and shaver power point.
- Frosted glass roof light (400mm w x 750mm H).
- Electric heated towel rail. Wall heater.
- W.C. (420mm seat H). Wash basin (780mm H).
- Bath (670mm W x 1650mm L x 570mm H).
- Electric shower over bath with shower screen.

Garden



- The garden is shared with the adjoining holiday cottage “Beach”. The garden is mainly grassed lawn enclosed by a low level stone wall. The wall is actually the quay edge and, below the other side, is the shoreline. There is a picnic table for each cottage and rotary dryer in the west side of the garden for sole use.

Additional Information

- Assistance dogs are welcome at all our cottages
- In the event of a fire, it is the responsibility of the guests to evacuate themselves. Vibrating fire/smoke detectors are available if requested at time of booking. Please contact us if you have any other specific access requirements in this respect.

Facilities at all cottages

In addition to the standard equipment and facilities, each cottage is equipped with the following:

- Cordless kettle
- Chair with armrests in dining room and living room.
- Good reading light
- Large handle vegetable peeler
- Easy tin opener
- Non-slip mat for bath/shower
- Non-slip place mat
- Easy jar opener
- Information in alternative formats (on request)

We aim to provide these items in all cottages but please check when booking as to their availability and to check if new items have been added to the list.

Specialist equipment

Other specialist equipment such as wheelchairs, bath seats, toilet frames etc may be available for loan or purchase from the local Red Cross loan centre. Please check this out before booking the Cottage and contact us if you require further information.

<http://www.redcross.org.uk/standard.asp?id=89425>

Future Plans to improve Access to NT Holiday Cottages

- We are currently in the process of writing access statements for all our holiday cottages and improving access over time for all our guests. All feedback is very helpful in informing us of ways in which we can improve access to all our cottages. We welcome any comments or ideas from you about access at this cottage and thank you for taking the time to do this. Please do this in the most convenient way for you. See contact details below or information on website.

About the Access Statement

- This Access Statement is intended to provide key information about the cottage that may be particularly relevant to guests with disabilities. Please contact us prior to booking if you would like information that is more specific and we will be happy to oblige.

Email: cottages@nationaltrust.org.uk

Phone: 0844 8002070

Access for All at the National Trust

- The Access for All office works to improve access at all National Trust cottages and properties. The office welcomes comments and ideas on improving access.

Phone: 01793 818531

Email: accessforall@nationaltrust.org.uk

July 2011