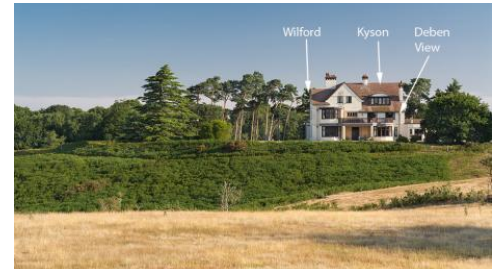


National Trust Cottages Access Statement

Kyson, Tranmer House, Sutton Hoo, ref. 010039

Introduction

- One of two second floor apartments within Tranmer House
- Brick and timber built with apartment situated above staff apartment, which in turn is above exhibition space and offices, and next to another holiday apartment
- Sleeps six in three bedrooms
- Bathroom plus separate shower room
- Communal grassed seating area shared with two other holiday apartments
- The apartment is reached by an external staircase and then a further internal staircase



© National Trust / Mike Henton

** Please note that all door widths given indicate the clearance required for access*

The apartment is arranged as follows:

- Front door opens onto the upper hall from which are accessed the bathroom and sitting room, which in turn leads to the kitchen / diner. Steps down from the hall lead to a lower hall off which are located the three bedrooms (super king, king and twin) and shower room.

Pre-Arrival

- See the main webpage for booking and location details
- Please contact us prior to booking if you have any specific access requirements
- Directions provided with booking
- Please bring a torch if arriving in the dark as there are no streetlights here

Approach

- Tranmer House is accessed via a signposted and tarmacked road across the Sutton Hoo estate
- There is a river bordering the estate

Arrival & Parking Facilities

- There is a fenced gravel parking area by Tranmer House; Kyson is assigned one parking space
- A gate 880mm wide leads from the gravel parking area, which has a concrete border, rising 40mm to cobbles, which give way to a path
- The uneven stone tile path leads through a gap in a further fence 920mm wide to the external stairs
- The tiled exterior stairs are 170mm high and have anti-slip sections, a metal handrail and exterior lights: there are 5 steps up to a semi-landing, then a 90° turn left to 11 further steps up to a landing
- From the lobby, Kyson is clearly marked via an internal staircase
- The keysafe is on the wall within the main lobby



Entrance to gravel parking area by Tranmer House



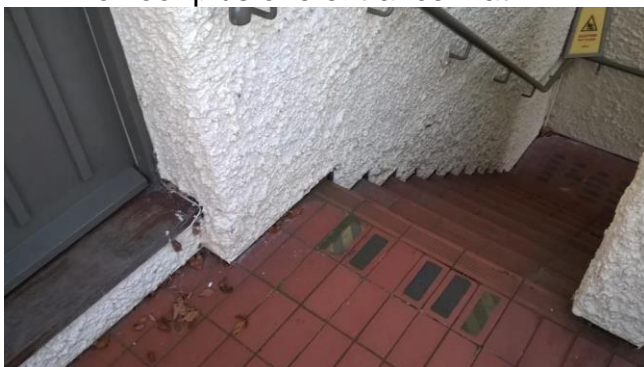
Gate from parking area to path to base of steps



Exterior stairs up to the apartment

Communal first floor lobby:

- From the exterior landing a door 850mm wide & 2.11m high gives access over a threshold 190mm up and then 60mm down to the lobby
- One wooden chair with a leather cushioned seat: seat height 480mm; seat back height 360mm
- Curved, tiled fireplace hearth: 90mm up
- Wooden side tables: height 720mm
- Wooden chest: height 990mm
- Three keysafes on the wall
- Two pendant lights
- Lino floor plus one entrance mat



Top of external stairs and door to communal lobby



Keysafes on wall of communal first floor lobby; door to Kyson on right

Internal staircase:

- Door: 770mm wide & 2.04m high with a threshold of 30mm
- Carpeted area with one pendant and a side table 710mm high bearing the router
- Steps: 190mm high
- Two steps up to semi-landing with north-facing window, then 90° left turn
- Sixteen steps up with two pendants to mini-landing, then 90° turn right
- Three steps up to upper landing with one pendant, door to communal second floor lobby
- Wooden handrail
- Carpeted



Internal staircase from the first floor to the second floor



Communal second floor lobby:

- At the top of the internal staircase, this lobby gives access to Kyson and Wilford
- Door: 760mm wide & 2.04m high with a threshold of 20mm
- Wooden chest: height 1.05m
- One pendant light
- Wooden floorboards plus one rug



Main entrance to Kyson on left from communal second floor lobby



View down the hall from the front door towards the



View from lower hall towards the front door



View from the front door towards the bathroom

Getting in (and out) of the cottage

- Door: 760mm wide; 2.04m high; wooden threshold of 30mm

Getting around the cottage**Upper hall**

- Wooden hallstand: 840mm high to surface
- Two pendant lights
- Windows to bathroom providing some borrowed light, covered with curtains for privacy
- Wooden floorboards with two rugs

Lower hall

- Four wooden steps down of maximum height 150mm
- Wooden games table: 680mm high
- Wooden chair with leather seat: 460mm seat height; 650mm back height
- One pendant light
- High windows to shower room providing borrowed light
- Carpet

Super king size bedroom

- Door: 680mm wide; 2.07m high; wooden threshold: 20mm
- Carpeted mini-landing with wooden rail surround
- Three wooden steps down to wooden floorboards: each 170mm high
- Super king size divan bed: 620mm high
- Two bedside tables, each with a lamp: 770mm high
- Chest of drawers with mirror: 740mm high
- Wardrobe: 580mm door width; 1.8m hanging hook height
- Cushioned armchair: 470mm seat height; 340mm back height
- Curved tile hearth: 10mm high
- Two pendant ceiling lights
- Window facing north over courtyard and outbuildings to trees beyond
- Wooden floorboards with three rugs

Shower room

- Door: 640mm wide, 1.98m high
- Shower with sliding doors: entrance 380mm wide; threshold 270mm up then 170mm down
- Basin height: 850mm
- Toilet seat height: 410mm
- One flush ceiling light
- Window facing east over grassland dotted with trees to woods beyond
- Lino floor



Steps down to the super king bedroom



Shower room

Twin room with sloping roof



King size bedroom sloping roof can be seen to the right of the window

Twin bedroom

- Door: 770mm wide; 2.05m high; wooden threshold 10mm up, then 30mm down
- Two wooden single beds: 800mm high; 270mm clear space under
- One bedside table with lamp: 860mm high
- Chest of drawers with mirror: 830mm high
- Wooden chair: 430mm seat height; 550mm back height
- Curved tile hearth 100mm high
- In-built corner cupboard: 780mm access width; 1.58m hanging height
- Sloping ceiling in one corner down to 1.36m from the floor
- Two pendant lights
- Window facing south over grassland dotted with trees towards the burial mounds
- Wooden floorboards with one rug

King size bedroom

- Door: 790mm wide; 2.06m high; wooden threshold down 20mm
- Divan king size bed: 610mm high
- Two bedside cupboards, each with a lamp: 760mm & 770mm high
- Wooden chest on chest: 1.83m high
- Armchair: 400mm seat height; 820mm back height
- Curved tile hearth 100mm high
- In-built cupboard: 760mm access width; 1.5m hanging height
- Sloping ceiling in one corner down to 1.35m from the floor
- Two pendant lights
- Window facing south over grassland dotted with trees towards the burial mounds
- Wooden floorboards with three rugs

Bathroom

- Door: 790mm wide, 2.04m high; wooden threshold 30mm up
- Bath with shower attachment: 570mm high; width 440mm at bottom; length 1.25m at bottom
- Basin with crosshead taps, height: 830mm
- Toilet seat height: 440mm
- Shelf: 870mm high
- Wooden chair: seat height 440mm; seat back height 400mm
- Marble-topped wooden cabinet: 760mm high
- 3-armed pendant light
- Window facing south over grassland dotted with trees towards the burial mounds
- Lino floor



Bathroom



Kitchen / diner



Sitting room



Detail of sloping ceilings in the sitting room

Sitting room:

- Door: 770mm wide; 2.04m high; wooden threshold 10mm up, 20mm down
- One three-seater and one two-seater fabric sofas: seat height 500mm; seat back height 440mm
- Two fabric armchairs: seat height 500mm; seat back height 400mm
- Fireplace (no longer in use): curved brick hearth: 10mm up
- Five wooden side tables, heights: 410mm; 500mm x 2; 720mm (bearing telephone); and 740mm
- Cabinet bearing television: 760mm high
- Wooden dresser: 1.34m high
- Desk with table lamp and stereo: 700mm high

National Trust

- Central high ceiling slopes to each side at far end of room
- Two 3-armed pendant lights, one floor lamp and one table lamp (detailed above)
- Two windows facing south and west across tree-dotted grassland towards woods and the River Deben
- Wooden floorboards and one rug

Kitchen / dining area

- No door, but open gap from sitting area: 770mm wide with a 30mm step up
- Worktop height: 890mm
- Ground and wall mounted cupboards, the latter 360mm above worktop
- Double oven & hob, microwave, dishwasher, washing machine, toaster, kettle, fridge-freezer and sink with small lever taps
- Wooden dining table: 770mm high; 620mm kneespace
- Four wooden chairs with leather seats: seat height 480mm; seat back 530mm
- Two wooden armchairs with leather seats: seat height 460mm; seat back 590mm
- Two 3-armed pendant lights
- Tiled floor



Communal garden

Outside

- **Fenced, grassed area** shared with two other apartments with views down the valley to the River Deben:
 - Metal table: 660mm kneespace
 - Four metal chairs: seat height 420mm; seat back 490mm high
- **Bin store** across the paved courtyard from the base of the exterior stairs

Additional Information

- Assistance dogs are welcome at all our cottages
- In the event of a fire, it is the responsibility of the guests to evacuate themselves. Vibrating fire / smoke detectors are available if requested at time of booking. Please contact us if you have any other specific access requirements in this respect.

Facilities at all cottages

The National Trust aims to expand the list of accessible /equipment/items available at each cottage and these may include:

- Cordless kettle



National Trust

- Hollowfibre bedding
- Chair with armrests
- Good reading light
- Large handle vegetable peeler
- Easy tin opener
- Non-slip mat for bath/shower
- Non-slip place mat
- Easy jar opener
- Information in alternative formats (on request)

Please note that we cannot guarantee that all items will be available at the time of your visit. Please enquire at the time of booking regarding any particular requests.

Specialist equipment

Other specialist equipment such as wheelchairs, bath seats, toilet frames etc may be available for loan or purchase from the local Red Cross loan centre. Please check this out before booking the cottage and contact us if you require further information.

<http://www.redcross.org.uk/standard.asp?id=89425>

Future Plans to improve Access to NT Holiday Cottages

We are currently in the process of writing access statements for all our holiday cottages and improving access over time for all our guests. All feedback is very helpful in informing us of ways in which we can improve access to all our cottages. We welcome any comments or ideas from you about access at this cottage and thank you for taking the time to do this. Please do this in the most convenient way for you. See contact details below or information on website.

About the Access Statement

This Access Statement is intended to provide key information about the cottage that may be particularly relevant to guests with disabilities. It is reviewed annually. Please contact us prior to booking if you would like more detailed information and we will be happy to oblige.

Phone: 0844 800 2070

Email: cottages@nationaltrust.org.uk

Access for All at the National Trust

We continue to work to improve accessibility at all our holiday cottages. We welcome comments and ideas on improving access.

Phone: 0844 800 2070

Email: cottages@nationaltrust.org.uk

January 2017