

# National Trust

## National Trust Cottages Access Statement

Knowles Farm Cottage  
001005  
Isle of Wight

### Introduction

- Farmhouse cottage is at St Catherines Point a hilly coastal area with lovely views across fields to the sea
- Cottage has low ceilings and small windows so dimly lit
- Please note most mobile phone networks do not work from this cottage
- 



The Cottage is arranged as follows:

## Ground Floor:

- Kitchen, sitting room and bathroom

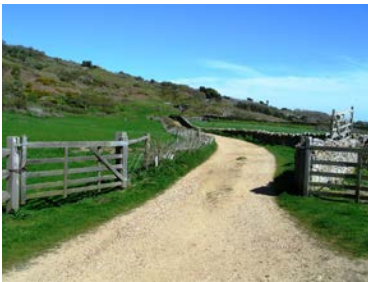
## First Floor:

- 2 bedrooms

## Pre-Arrival

- See the main webpage for booking and location details.
- Please contact us prior to booking if you have any specific access requirements.
- Directions provided with booking

## Approach



- Along a private track for ½ a mile which is steep and majority of it an unmade road so uneven

## Arrival & Parking Facilities

- Parking directly outside cottage for several cars

## Getting in (and out) of the cottage



- Gate and concrete path around side of cottage leads to front door
- Front door 790 mm wide and there is a 30mm wooden threshold
- Leads directly into kitchen

## Getting around the cottage



### Ground floor:

- Enter into kitchen with stairs to the left up to the bedrooms and doorway to the right leads into sitting room
- From sitting room corridor leading to bathroom
- This carpeted corridor is narrow 730 mm narrowing to 630 mm with step up of 120 mm

### First floor:

- Stairs are 670 mm wide and carpeted
- Fixed handrail on right hand side
- 10 stairs with 190 mm tread lead directly to double bedroom – there is no doorway

## Kitchen



- Height of worktop is 915mm
- Quarry tiled floor
- Small window and low ceiling so dimly lit
- Two sets of spotlights, two lantern lights and small ceiling light
- Washing machine
- Dishwasher
- Toaster

- Microwave
- Fridge/freezer 1700 mm high
- Cordless kettle
- Table 730 mm high
- Chairs with seat height of 460 mm have back rests

- **Ground floor Bathroom**



- Doorway into bathroom is 710 mm wide
- Lino flooring
- WC, basin and bath with electric shower
- The WC is 460 mm high
- Basin with pillar taps 850 mm
- Side of bath 570mm high
- A centre ceiling light

## Sitting Room



- Door way into sitting room is 730 mm wide with 30 mm wooden threshold onto carpet
- Dimly lit room
- 2 wall lights with economy lighting
- Table lamp
- 2 armchairs with armrests seat height is 500 mm
- Sofa 450 mm
- TV and DVD player
- Open fire

## Twin Bedroom



- This bedroom is only accessible through the double bedroom
- 2 twin wooden bedsteads 510 mm high
- Headboards are positioned against back wall and both beds have separate access
- Table lamp with economy bulb positioned between the 2 beds

## Double Bedroom



- 5ft iron bed 640 mms high
- Bed headboard against wall with space either side
- 2 table lamps with low energy bulbs on either side of bed
- This bedroom leads into twin bedroom

## Garden



- Walled garden to rear of cottage laid to lawn with views across fields to sea
- Wooden bench

## Additional Information

- Assistance dogs are welcome at all our cottages
- In the event of a fire, it is the responsibility of the guests to evacuate themselves. Vibrating fire/smoke detectors are available if requested at time of booking. Please contact us if you have any other specific access requirements in this respect.

## Facilities at all cottages

The National Trust aims to expand the list of accessible /equipment/items available at each cottage and these may include

- Cordless kettle
- Hollowfibre bedding
- Chair with armrests
- Good reading light
- Large handle vegetable peeler
- Easy tin opener
- Non-slip mat for bath/shower
- Non-slip place mat
- Easy jar opener
- Information in alternative formats (on request)

Please note that we cannot guarantee that all items will be available at the time of your visit. Please enquire at the time of booking regarding any particular requests.

## Specialist equipment

Other specialist equipment such as wheelchairs, bath seats, toilet frames etc may be available for loan or purchase from the local Red Cross loan centre. Please check this out before booking the Cottage and contact us if you require further information.

<http://www.redcross.org.uk/standard.asp?id=89425>

## Future Plans to improve Access to NT Holiday Cottages

- We are currently in the process of writing access statements for all our holiday cottages and improving access over time for all our guests. All feedback is very helpful in informing us of ways in which we can improve access to all our cottages. We welcome any comments or ideas from you about access at this cottage and thank you for taking the time to do this. Please do this in the most convenient way for you. See contact details below or information on website.

## About the Access Statement

- This Access Statement is intended to provide key information about the cottage that may be particularly relevant to guests with disabilities. Please contact us prior to booking if you would like information that is more specific and we will be happy to oblige.  
Email: [cottages@nationaltrust.org.uk](mailto:cottages@nationaltrust.org.uk)  
Phone: 0844 8002070

## Access for All at the National Trust

- The Access for All office works to improve access at all National Trust cottages and properties. The office welcomes comments and ideas on improving access.  
Phone: 01793 818531  
Email: [accessforall@nationaltrust.org.uk](mailto:accessforall@nationaltrust.org.uk)

Date (e.g. January 2011)