

National Trust Cottages Accessibility Guide

Lapwing – How Hill Cottages



Introduction

- Situated less than a mile from Fountains Abbey, a World Heritage site with spectacular ruins of a 12th-century Cistercian abbey, the cottages at How Hill are situated around a courtyard and have been converted from a group of 18th-century farm buildings.
- These have been sympathetically restored using traditional materials whilst incorporating modern green technology such as the use of Ground Source Heat Pump in the heating system. The tower on the hill behind the cottages is believed to have been originally built as an outlying chapel for the Abbey. It was restored by John Aislabie, when he owned the Estate, and rumour has it that he used it as a gambling den. The farm buildings at the side of the tower were added at a later date and the property was occupied until the 1950s.
- These farm buildings have been sympathetically restored using traditional materials whilst incorporating modern green technology such as the use of Ground Source Heat Pump in the heating system. The single storey cottage has generous living space for 4 has central heating, a wood-burning stove and shared paved courtyard around which it is situated.
- The Cottage is arranged as follows:

Ground Floor:

- Kitchen, Dining Room – open-plan to Sitting Room area & Toilet



Kitchen/dining room



Sitting room

First Floor:

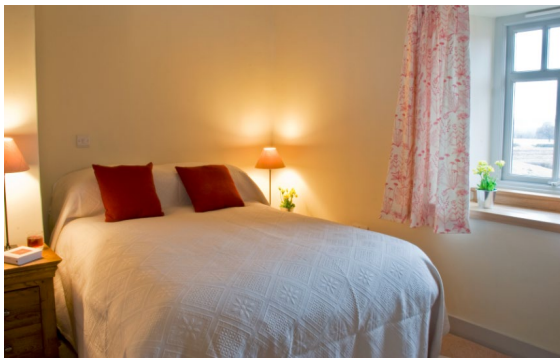
- 3 Bedrooms (1 en-suite) & Family Bathroom



Ensuite bedroom



Ensuite bathroom



Bedroom 2



Bedroom 3



Family bathroom

Pre-Arrival

- See the main webpage for booking and location details.
- Please contact us prior to booking if you have any specific access requirements.
- Directions provided with booking

Approach

- Off main road, up a small incline, turn left into car parking area

Arrival & Parking Facilities

- Directly outside cottages; each cottage has designated parking areas

Getting in (and out) of the cottage

- From car park through archway into courtyard. Main door leads off courtyard.



National Trust

Getting around the cottage

Ground floor:

- From main door into small lobby. Left door into Sitting Room.
- Straight ahead onto stairs leading to 1st Floor.
- Bear right to Kitchen Door. Outside kitchen door is utility room with Washing Machine and Tumble dryer.

First floor:

- Up staircase to landing, 3 bedrooms and Family Bathroom

Kitchen

- Height of worktop is 910mm
- Double oven with 4 ceramic hobs.
- Microwave, Stand alone Fridge, stand alone Freezer, Kettle, Toaster, Dishwasher
-

Ground floor Bathroom

- WC, basin
- The WC is 480mm high

Sitting Room

- 2 Sofas & Armchair – Coffee Table, TV & Hi-Fi – Fireplace with guard

Dining Room

- Dining Table with 5 chairs: no arms & Sideboard

Telephone/Other Rooms

- Small laundry room with Washing Machine and Tumble Dryer

Single Bedroom

- n/a

Twin Bedroom

- 2 beds, sidetable between beds, 2 lamps
- Wardrobe & Chest of drawers

Double Bedroom 1

- Side table with lamp, Built-in shelf behind bed, with 1 lamp.
- Chest of drawers, walk-in wardrobe
- 1 spare heater in walk-in wardrobe

Double Bedroom 2

- En suite bathroom, 2 side tables with lamps

- Large Wardrobe, Chest of drawers with mirror

Additional Information

- Assistance dogs are welcome at all our cottages
- In the event of a fire, it is the responsibility of the guests to evacuate themselves. Vibrating fire/smoke detectors are available if requested at time of booking. Please contact us if you have any other specific access requirements in this respect.

Facilities at all cottages

The National Trust aims to expand the list of accessible /equipment/items available at each cottage and these may include

- Cordless kettle
- Hollowfibre bedding
- Chair with armrests
- Good reading light
- Large handle vegetable peeler
- Easy tin opener
- Non-slip mat for bath/shower
- Non-slip place mat
- Easy jar opener
- Information in alternative formats (on request)

Please note that we cannot guarantee that all items will be available at the time of your visit. Please enquire at the time of booking regarding any particular requests.

Specialist equipment

Other specialist equipment such as wheelchairs, bath seats, toilet frames etc may be available for loan or purchase from the local Red Cross loan centre. Please check this out before booking the Cottage and contact us if you require further information.

<http://www.redcross.org.uk/standard.asp?id=89425>

Future Plans to improve Access to National Trust Holiday Cottages

- We are currently in the process of writing accessibility guides for all our holiday cottages and improving access over time for all our guests. All feedback is very helpful in informing us of ways in which we can improve access to all our cottages. We welcome any comments or ideas from you about access at this cottage and thank you for taking the time to do this. Please do this in the most convenient way for you. See contact details below or information on website.

About the Accessibility Guide

- This Accessibility Guide is intended to provide key information about the cottage that may be particularly relevant to guests with disabilities. Please contact us prior to booking if you would like information that is more specific and we will be happy to oblige.

Email: cottages@nationaltrust.org.uk

Phone: 0344 800 2070



Access for All at the National Trust

- The Access for All office works to improve access at all National Trust cottages and properties. The office welcomes comments and ideas on improving access.
Phone: 01793 818531
Email: accessforall@nationaltrust.org.uk

Date February 2017