

National Trust Cottages Accessibility Guide

Gamekeepers Cottage Felbrigg

Reference: 010016

Category 3

Introduction

This is a detached single storey estate cottage located on the Felbrigg Estate including gardens and woodland. It has immediate access to the lakeside path and other estate walks. Coastal towns and beaches are within a 10 minute drive (NT website).

Internal changes in level may make wheelchair access difficult. The cottage sleeps five people.



The Cottage is arranged as follows:

Ground Floor:

- There is a small hallway on the entrance level. On entry, to the left, 2 tiled steps lead up to the kitchen/dining room and then on to the large sitting room with open fire. From the sitting room there is access to three bedrooms (double, twin and one single). From the hallway a bathroom with shower over the bath, and a single separate WC is found. A second carpeted set of steps leads up to an alternative doorway to the sitting room and on to a single bedroom at the end of a very short corridor.
- The doorway seen in the photo above is the original entrance which is now blocked up and leads into the sitting room.

Other

- Even though this is a single storey cottage there are changes of level which may mean that people who find steps difficult may not be able to access key rooms.

Pre-Arrival

- See the main webpage for booking and location details.
- Please contact the Contact Centre (0844 8002070) prior to booking if you have any specific access requirements or need additional information.
- Directions to the cottage are provided with your booking

Arrival & Parking Facilities

- From the approach road there is a 5 estate bar gate which marks the approach. A clear 'Gamekeepers Cottage' sign is provided.
- Designated parking area is located near to the cottage with a slightly sloping compacted earth/gravel surface.
- 2 cars can be accommodated in the space provided.
- From the car-park area there is a swing timber gate which leads to the cottage at 1190mm width.
- A further gate to the left is an alternative entry point to the rear garden and is 960mm wide.
- From the car-park area there is a path with a concrete surface leading to the rear entrance and has a maximum width of 800mm. It is clear where to go.
- Access to the key safe is convenient and is located to the right of the kitchen door.
- The Key safe code is in your information pack.



Getting in (and out) of the cottage

- Small threshold at the door with a maximum height of 70mm. Door width is 770mm. Good weather mat. (Coir)

Ground floor:

- From the entrance hall there are two tiled steps up into the kitchen, each 135mm high and 730mm wide
- Another set of carpeted steps are of 165mm and 135mm respectively and is 780mm wide.
- Clear door widths to key rooms range between 675mm - 800mm
- Small timber threshold between the kitchen and sitting room. Max height 45mm.
- Internal circulation space in the sitting room reduces to 540mm between the door leaf and the nearest sofa.
- Floor coverings are of terracotta stone tiles in the kitchen, with vinyl tiles/sheet in the hallway, bathroom with other wet areas. Most other rooms are fitted with close weave carpet.
- There are no low ceilings, beams or door frames
- The cottage offers good levels of illumination from large windows, with additional standard & where necessary table lamps.



First floor:

- Not applicable

Kitchen/diner

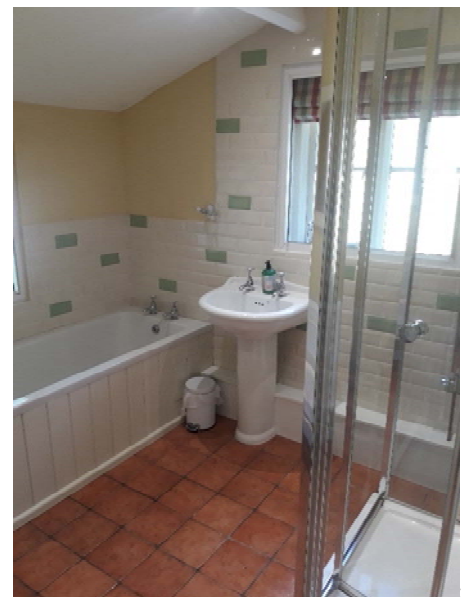
The kitchen is large with good circulation space. Very good levels of natural illumination. A timber dining table and chairs is provided. Central heating controls are wall mounted above the dining table area.

- Height of worktop is 940mm high. (standard height is 910mm).
- One and a half bowl sink. Stub lever taps are fitted
- Electric Hotpoint combined grill and oven. Halogen hob has additional safety features. Easy to see and use controls
- Kitchen table 800mm height
- 6 Dining chairs 450mm height
- Large Welsh Dresser
- Butchers block table 860mm height
- Inbuilt cupboards housing central heating system
- Microwave oven/ cordless kettle/ Toaster
- Dishwasher
- Fridge/freezer
- Washing machine
- Pendant light and spotlights



Ground floor Bathroom/shower room

- Room size 2530 x 2600mm. Bath, WC, corner shower cubicle and wash hand basin.
- Close coupled WC height at 420mm to seat
- Wash-hand basin is set at 800mm with pillar taps
- Light over wash hand basin
- Bath height - 560mm.
- Bath length -1350mm, internal depth 350mm
- Corner shower cubicle with 200mm step into/80mm step down
- Shower door opening max. 470mm width
- 1500mm to shower controls
- 1350 minimum shower head height
- Circulation space within the room is reasonable



- Heated towel rail
- Small wooden table

Single WC (entry level)

- Door width 700mm
- Dimensions of the room is 1720 x 960mm
- Radiator
- Height to WC seat 420mm

Sitting Room

- Doorway from the kitchen at 750mm wide with threshold step –



- Another door opens into the double bedroom - width 730mm
- 2 sofas with a seat height between 430mm & 450mm
- Wing chair is a little higher at 470mm with good arm-rests
- Table with flat screen TV and DVD equipment 840mm height
- Illumination levels in this room are good
- Wall mounted and table lamps - all low energy bulbs
- Circulation is reasonable

- A landline phone is provided (mobile coverage may be variable in this area)
- Fire - guard is available for the open fire.
- Tiled hearth 30mm height
- Coffee table 460mm height
- Small circular table 640mm height
- Log basket
- Curtains - are easy pull
- Carpeted floor with some small rugs.
- 3 sets of double electric sockets

Twin Bedroom/double bedroom

- Twin beds - height 550mm and 2000mm length.
- Width 550mm.
- Wardrobe
- Chest of drawers 790mm height
- Easy chair 420mm seat height
- 2 bedside cabinets – 700mm height and lights
- Carpeted
- Easy to pull curtains



Double bedroom



- Door into corridor 700mm width, level threshold.
- Bed height is 500mm. Length 1900mm width 1400mm.
- Space to right hand side 700mm
- Bedside cabinets 720mm height with lamp (low energy)
- Dressing table with vanity mirror 700mm height
- Chair 460mm seat height
- Locked caretakers cupboard door
- Cord at bed for central light

Single bedroom

- Metal frame bed - 550mm to top of mattress
- Width 940mm/ length 1900mm



- Single bedside cabinet 800mm height with lamp
- Table with drawer 660mm height
- Chair 470mm seat height
- Easy pull curtains
- Moderate circulation space
- Cord pull for central light
- Good illumination levels
- Close to WC via 2 carpeted steps

Garden

- Large garden to the rear
- Small storage shed
- Garden left to grass a little uneven in places
- Garden furniture available

Additional Information

- Assistance dogs are welcome at all our cottages
- In the event of a fire, it is the responsibility of the guests to evacuate themselves. Vibrating fire/smoke detectors are available if requested at time of booking. Please contact us if you have any other specific access requirements in this respect.

Facilities at all cottages

The National Trust aims to expand the list of accessible /equipment/items available at each cottage and these may include

- Cordless kettle
- Hollowfibre bedding
- Chair with armrest
- Easy tin opener
- Non-slip mat for bath/shower
- Non-slip place mat
- Easy jar opener
- Information in alternative formats (on request)

Please note that we cannot guarantee that all items will be available at the time of your visit. Please enquire at the time of booking regarding any particular requests.

Specialist equipment

Other specialist equipment such as wheelchairs, bath seats, toilet frames etc may be available for loan or purchase from the local Red Cross loan centre. Please check this out before booking the Cottage and contact us if you require further information.

<http://www.redcross.org.uk/standard.asp?id=89425>

Future Plans to improve Access to NT Holiday Cottages

- We are currently in the process of writing accessibility guides for all our holiday cottages and improving access over time for all our guests. All feedback is very helpful in informing us of ways in which we can improve access to all our cottages. We welcome any comments or ideas from you about access at this cottage and thank you for taking the time to do this. Please do this in the most convenient way for you. See contact details below or information on website.

About the Accessibility Guide

- This Accessibility Guide is intended to provide key information about the cottage that may be particularly relevant to guests with disabilities. Please contact us prior to booking if you would like information that is more specific and we will be happy to oblige.

Email: cottages@nationaltrust.org.uk

Phone: 0344 800 2070

Access for All at the National Trust

- The Access for All office works to improve access at all National Trust accommodation and properties. The office welcomes comments and ideas on improving access.

Phone: 01793 818531

Email: accessforall@nationaltrust.org.uk