

Newton House and Dinefwr Access Statement

Newton House is a 17th century mansion encased in a 19th century Gothic façade. The house is set in an 800 acre parkland, part of which has been designated a National Nature Reserve. Dinefwr is located on the edge of the town of Llandeilo in Carmarthenshire. The house was the home of the Rhys family, who became the Barons of Dynevor. The three publicly accessible floors of Newton house can be accessed by people with mobility issues by way of a lift which is a fire evacuation lift.

Contact Details

Newton House, Dinefwr, Llandeilo, Carmarthenshire, SA19 6RT
T: 01558 823902
E: Dinefwr@nationaltrust.org.uk

Points to note

The mobile phone reception across most of the site is reasonable, although very poor in the house.

- The property was not built on level ground; the route from the Visitor Car Park to Newton House is via a tarmac driveway which is at a slight gradient.
- There are several estate walks that are useable by people in wheelchairs, although the paths can be rough and muddy. There is a dedicated wheelchair/buggy friendly route around **the Board Walk**.
- There are also two Blue badge car parking spaces near the entrance to the Board Walk; the Castle Walk café is also near the Blue badge car parking places.
- The small garden at the rear of the house is accessible except for the upper terrace and fountain area
- Dogs are allowed at Dinefwr with the following exemptions: they are not allowed in Newton House, the Deer Park or the Board Walk, although assistance dogs are welcome in Newton House and the Board Walk.
- The Castle Walk Café has a dog friendly policy.
- There is a water bowl outside the Visitor Information Point, Castle Walk Café and by the picnic area at the side of Newton House. There are dog-waste bins in the main car park, on the North Drive near Penparc and at the Main entrance to the park.
- Light levels in the house are kept low to maintain and protect the collection.
- There are no power assisted doors on the estate.
- On the north-west side of the house, the garden has a fountain, and a Ha-ha with a 2 meter drop, this is not fenced. There are steps from ground level to the fountain and to the upper tier of the garden.
- Induction loops are fitted in the Butler's Pantry and Ale Cellar
- There is a passenger lift to the First Floor and Basement of Newton House



Arrival & Parking Facilities

- Dinefwr is located on the outskirts of the town of Llandeilo, the property is sign posted off the A483 on entering from either side of Llandeilo, and from the A40 from Carmarthen. The directional signs are the brown Tourist Board signs.
- The main car park is south west of the house and is accessed after arrival at the Welcome Point.
- The main car park surface is compacted gravel hard standing.
- Should the main car park become full, there is an overflow car park across a cattle grid, although the track is gravelled, parking is on the grass. This is a reasonably flat area of grass which occasionally has sheep in the field. This car park is located south of the Visitor Information Centre.
- There is a designated Blue badge holder parking area to the left of the Visitor Information Centre. These are generally hard standing bays.
- There are no transfer vehicles at Dinefwr, there is the provision for dropping passengers off outside Newton House and then the vehicle returning to the car park.
- Areas of the main car park are occasionally cordoned off for wedding party parking.
- The coach drop-off and collection point is outside the Visitor Information Centre, with the coach parking at Home Farm.

Seating

- There are picnic table and benches available outside the Billiard Tea Room on the lawned area, which have limited wheelchair access and in the Inner Courtyard.
- There are benches available in the garden to the rear of Newton House, stone benches under the conservatory and in the Summer House which is on the upper terrace.
- There are picnic benches available outside the Castle Walk Café which have limited wheelchair access
- There are benches located at nine strategic points along the Board Walk.

WCs

- There are WC's next to the **Visitor Information Centre (VIC)** in the main car park, including one which has been adapted for use as a disabled WC; This WC has a right-hand transfer accessible WC, there is space to turn a wheelchair. The toilet is a right hand transfer.
- The room is 1.4m wide*1.7m deep.
- There is no natural light; the WC is lit by a circular D shaped fluorescent light fitting.
- There are no adult changing facilities. The WC is provided with disposable paper towels. The WC has vinyl floors and painted wall surfaces.
- There is a WC in **the Coal passage** on route to the Inner Courtyard. This WC has a right-hand transfer accessible WC with space to turn a wheelchair through.
- The room is 1.5m wide*2.0m deep.
- There is no natural light; the WC is lit by a circular D shaped fluorescent light fitting. There are no adult



changing facilities. The WC is provided with disposable paper towels.

- The flooring in the WC is vinyl and painted wall surfaces. There is an emergency pull cord in this toilet
- There are WC's in the **basement of Newton House** including a disabled WC. This WC has a left-hand transfer accessible WC with space to turn a wheelchair through.
- The room is 1.6m wide*1.4m deep.
- There is no natural light; the WC is lit by a circular D shaped fluorescent light fitting. There are no adult changing facilities. The WC is provided with disposable paper towels.
- The flooring in this WC is vinyl and painted wall surfaces. This WC has the baby changing facilities located in it.
- There are separate male and female WC's in the basement. The other WC's have ceramic floor tiles and painted walls. There is an emergency pull cord in this toilet
- Access to the basement is by stairs or passenger lift.
- There are WC's in **the building in the Children's Play Area**, this is 374m from the VIC, which is down a dirt gravel path which has a steep gradient, and the toilet is up a dirt path which has a steep incline.
- One of the WC's has been adapted for use as a disabled WC; there is space to turn a wheelchair. The toilet is a right hand transfer.
- The room is 1.6m wide*1.9m deep.
- There is no natural light; the WC is lit by a circular D shaped fluorescent light fitting. There are no adult changing facilities.
- There is another WC in this building and a separate baby changing room. These WC's are provided with disposable paper towels. The WCs have painted concrete floors and painted wall surfaces.



Visitor Information Centre

- There are two visitor reception points at Dinefwr; the first is as you arrive at the car park and is the **Welcome Point (WP)**, this is on the roadside and the WP staff greet the visitors in their vehicle.
- NT members are booked in and receive their wrist band which gives them entry to the parkland at Dinefwr and entry into Newton House. Non-members are directed to the second visitor reception point at the Visitor Information Centre where they can pay their entry fee and receive their wrist band and information on becoming members and about the property.
- The **Visitor Information Centre (VIC)** is a wooden building with carpeted interior.
- The VIC is accessed either by a set of steps or via a ramp located adjacent to the Blue badge holders parking area. The VIC is at a raised level and is accessed up a ramp onto the VIC deck area.
- The ramp is 1.5m wide * 3.4m long at a gradient of 1:13 leading to a 1.5m*1.5m landing; the ramp then turns right through 90° off the landing up a ramp which is 1.5m wide* 1.8m long at

a gradient of 1:12. There is a clear landing area at the end of the ramp of a minimum of 1.2m between the end of the ramp and the access door into the VIC.

- The ramps are of a wooden structure with a high quality anti-slip Phenolic mesh faced plywood board. There is a 950mm high timber handrail along the length of the ramp.
- The single entrance door is non-power operated, approx. 970mm wide and opens outwards to 90 degrees. There is a 30mm high ramped threshold lip at this door. Staff and volunteers can assist with opening the door if required.
- There are 4 windows and 1 half glazed set of double doors to provide natural light which is supplemented with a conventional pendant light adjacent to the membership table and 4 fluorescent bulb fittings.
- The reception desk is over 970mm high, there is also a desk which the reception team use for membership enquiries and is 730mm high. Seats are available in the VIC and benches on the veranda outside.
- There is a manual wheelchair available from the VIC with a second manual wheelchair available in Newton House.

Route to Newton House

- The walk from the VIC to Newton House is 203m. After leaving the VIC the route is on a tarmac drive to the main gates, the surface then becomes compacted pea grain gravel which doesn't rut very easily. Care needs to be taken approaching the Porte Cochere as there is a small step down; it is advised that people go either to the left or right hand side of the Porte Cochere where the entry is on level ground.
- The door into Newton House is entered from under the Porte Cochere, and is not an automatic door.
- There is a ramp, 2.44m long*1.22m wide which covers the full width of the doors to allow ease of entry. The two doors are 1.45m wide, 725mm wide each. The right hand side door is normally open; the left hand door can be opened to make the access wider for ease of entry and exit. Staff and volunteers are available to open the door if required.
- There is an alternative entry – exit door available into Newton House, the entry to this is between the Billiard Tea Room and Newton House, and is opposite the lift. This door is 900mm wide and is usually kept locked but can be opened on request. There is a concrete walkway that leads to the door with a ramp 2.95m long*1.20m wide with a 75mm upstand, with a gradient of 1:40. The ramp adjoins a level concrete pad 2.20m long*2.70ms wide.



Newton House

- **Ground Floor**
- The floor in the **Entrance Hall** is wooden with rugs, a mat as you come through the front door to clean shoes on; this mat is less than 6mm thick. There are also full length blinds on the

windows. The remainder of the floors and main staircase are wooden covered with rugs or carpets and assists with minimising echo.

- Due to the nature of the building there are some restrictions with the use of powered wheelchairs and mobility vehicles inside the House due to turning circles.
- Access to the basement and first floor may also be restricted for powered vehicles depending on their length; small lightweight ones if short enough will be able to get in and out for access to the basement but not on the first floor as there is the need to turn the vehicle through 90° to enter or exit the lift.
- There is a central unit which provides seating and also two dining type chairs, none of the seats have arms.
- If you require use of a quiet space, please indicate this to a member of staff who will be able to find a suitable area for you.
- The entrance hall has 3 doors, to the left of the main door is the door to the **lift and Billiard Tea Room**, this door is 870mm wide. The corridor is 13.7m long to the lift and a further 10m to the cafe entrance; the door is 940mm wide.
- The cafe is divided into two sections, the server and the main seating area, the doors from the seating area are 970mm wide and the door nearest the window is 1.02m wide. The floor throughout the tea room and server is wooden boards, there are 4 woven tapestry wall hangings but this does not have a major effect on minimising echo and volume of noise. The tea room and servary have large windows providing natural light which is supplemented by ceiling and wall lights which use low energy light bulbs.
- There is a secondary route to enter from the picnic area or to leave the tea room without going through the entrance hall.
- To access the tea room **from the lawned picnic area** to the south of the annexe, the door is in the south west corner and is 1.0m wide, there is a short platform leading to two steps down onto a level quarry tile corridor 13m long. The corridor turns right for a further 10m and through a door 1.0m wide which leads to a small stone flagged floor area; the kitchen is on the right, there is no public access to the kitchen.
- There is to the left of the door a set of 6 steps which will bring you onto the corridor that leads into the tea room which is on the right. There are handrails for both sets of steps.
- Leaving the tea room and avoiding the main entrance is via the route outlined above.
- The passenger lift is available for use by visitors with limited mobility, between the ground floor and basement and ground floor and first floor. Visitors wishing to use this lift should speak to a member of staff beforehand.
- The door to the right in the entrance hall takes you into the **Dining Room**; the entrance door is 1.02m wide. This room has a wooden floor that has a rug that covers almost all the floor; there are full length curtains on all the windows, the carpet and curtains assists with minimising echo. The room is illuminated by wall light with low energy bulbs. The room has two doors on the northern wall, the door on the eastern side is 970mm wide, and leads to the Basement via slate steps; the steps are 4, platform, 2, platform 11. There are several dining chairs available in the room, none of which have arms.
- The western door leads into the Drawing Room.
- **The Drawing Room** is accessed through this door which is 970mm wide; there is a short unlit corridor of 1.3m through another door 970mm wide into the Drawing Room.



- The Drawing Room can also be accessed from the Inner Hall where the door is 960mm wide.
 - The Drawing Room has a wooden floor that has a rug that covers almost all the floor; there are full length curtains on all the windows, the carpet and curtains assists with minimising echo. The room is illuminated by wall light with low energy bulbs.
 - There is natural light in all ground floor rooms, but some rooms are darker to protect the collections in that room. The majority of the lights are Low Energy Bulbs.
 - There are a combination of dining type chairs with no arms and comfortable chairs and a sofa which can be sat on.
 - The **Book Room** is accessed from a door to the left of the main stairs; this door is 1.12m wide, this room can also be accessed from the corridor leading to the lift and the tea room and is 830mm wide.
 - This room has a wooden floor that has a rug that covers a large area of the floor, there is natural light provided by the windows on the west and south side of the room are no curtains on the windows, The natural light is supplemented by two rows of ceiling mounted LED spotlights, and low energy bulbs in wall light fittings.
 - There are two comfy chairs and sofa that can be sat on and a desk chair which has a back and arms. There is very little echo in the room.
- **Basement**
 - The entrance to the **Basement** is down the Servants stairs which lead off the Book Room corridor; there are ten steps a platform and a further ten wooden steps. There is also a passenger lift which is on the right hand side of the corridor on route from the Entrance Hall to the Café.
 - The **lift lobby** has no natural light; it is illuminated by a Low Energy Bulb, the floor is stone flags. There is a door opposite the lift that can provide an alternative route into or out of Newton House for people with mobility issues on request.
 - The lift is not spacious, the door in is 890mm wide; the inside measurement of the lift is 1m long*890mm wide. The lift also goes to the first floor. The access door on the lift is not the same for all three floors. The entrance in and out of the lift on the ground floor and basement is the same; straight in and out. The entrance/exit door on the first floor is at 90° to the doors on the ground floor and basement. A conventional wheelchair will fit in but it is a tight fit and it is recommended to take the footrest off.
 - On exiting the lift, the surface is stone slabs, the surface is relatively smooth.
 - The door from the lift lobby to begin the visitor route around the basement is 1.02m wide, once through this door the visitor route turns left through a door 900mm wide. In this small lobby the Disabled toilet is located. The door into this toilet is 910mm wide; the WC has a left-hand transfer accessible WC with space to turn a wheelchair through. The room is 1.6m wide*1.4m deep. There is no natural light; the WC is lit by a circular D shaped fluorescent light fitting. There are no adult changing facilities.
 - The visitor route from the disabled toilet is through a door 860mm wide and down a short wooden ramp, 860mm wide*700mm long with a gradient of 1:10 into the **Brushing Room**. The flooring is stone slabs, there is a window in the room but because it's in the basement there isn't a lot of natural light. The lighting is by low energy bulbs, there is little in the way of soft furnishings but there is not a lot of echo. There is an induction loop located near the window. There is a bench seat with arms and backrest available for sitting on.





National Trust

- The exit from the brushing room is through a door 1.02m wide opposite the door in; and is up a short wooden ramp 1.33m wide*650mm long with a gradient of 1:6.5, this is a little steep but is over a short distance and a longer ramp would have H&S issues, the doorway leads into the **Safe corridor**.
- This corridor contains several small rooms along it. The rooms are; the Games store, the Luggage store, the Silver Safe and the Knife cleaning room. These rooms are narrow and there is no room to turn a wheelchair around in any of them. The flooring is stone slabs, there are no windows in the room; the lighting is by low energy bulbs, there is no soft furnishings but there is not a lot of echo.
- At the opposite end of the corridor from the Brushing Room there are two doors, one straight in from which leads into the Butler's Pantry and one at 90° to it that continues your route through the basement.
- The door into the **Butler's Pantry** is 1m wide. The flooring is a combination of quarry tiles and cement with some rugs on the floor. Due to the amount of furniture in the room this seems to help reduce the echo in the room. There is a window in the room but because it's in the basement there isn't a lot of natural light. The lighting is by low energy bulbs. There are seats available, the majority without arms.
- There is no seating between the Butler's Pantry and the Ale Cellar
- The door on the left as you exit the Butler's Pantry is 970mm wide; the route takes you along to the **Ale Cellar**. The floor is stone slabs and is generally level. There are windows along the corridor; but because it's in the basement there isn't a lot of natural light. The lighting is by low energy bulbs. The route along this corridor takes you past the Butler's bathroom, there is a step of 160mm high, the room is too small to get a wheelchair in and turn around. The step also makes it difficult to get a wheelchair in. The door is 800mm wide.
- Around the corner from the Butlers Bathroom are two **Wine Cellars**, continuing along the corridor is the Ale Cellar and a flight of slate steps that leads to the Dining Room; the steps are 11, platform, 2, platform 4 and entry to the Dining Room. Once past the wine cellar you go through a door 1m wide with the entrance to the Ale Cellar immediately on the left through; the door is 820mm wide.
- The **Ale Cellar** floor is stone slabs and is generally level. There are two small deep recessed windows along the north wall; due to the nature of being in the basement and the type of windows there isn't a lot of natural light. The lighting is by LED bulbs. There are no soft furnishings or other items to help reduce echo and the lower level of the ceiling there is a higher level of echo in this room. On the east wall there is an audio visual display; there is an induction loop for this display. There are four low benches in this room with no backs or arms.
- On exiting the room any visitors in wheelchairs or who find using stairs difficult will need to retrace their steps back to the lift.
- **First Floor**
 - **The First Floor** can be accessed from the entrance hall through the door opposite the main entrance door; the door into the Inner Hall is 920mm wide, the Drawing Room can be accessed from the Inner Hall also.
 - The **Inner Hall** floor is of wooden boards with a rug that covers a large portion of the floor and two seats and a sofa; the nature of the space is such that there may be echo.
 - There are small windows in the west wall but day light is limited. Light is provided by the use of low energy bulbs.
 - There is a wide wooden staircase leading to the first floor, there is a banister on the right hand side of the stairs as you go up; due to the style and width of the bannister it is not suitable to hold to provide support.

- The stairs are in three stages with a platform at each stage; the step arrangements are, 10, 8, 10 between each platform.
- At the second platform level there is a conservatory which is accessed by going up 3 stone steps. There are double doors providing entry into the Conservatory with each door being 650mm wide.
- **The Conservatory** has lots of light due to the windows and glass roof. The floor is of quarry tiles, and although there are no soft furnishings there doesn't seem to be an issue with echo. There is a bench in the room to sit on if required.
- The visitor route of the first floor starts at the top of the stairs when you enter the **Discovery Room** via the door to the left, the door is 1.02m wide.
- The Discovery Room is carpeted throughout, the carpet stops short of the wall exposing bare wooden floorboard. The carpet and other items in the room helps keep the echo to a minimum.
- There is natural light through one large window in the room; this light is supplemented by three rows of ceiling mounted LED lights.
- In the centre of the room there is a large model showing the extent of Dinefwr, there is sufficient room to get a wheelchair around this model. There are no seats in this room.
- Two other rooms can be accessed from the Discovery Room; at the north end of the room there are two doors which lead into an exhibition room known as the **Reflections room**, these doors are 890mm wide.
- The Reflections room is carpeted throughout, the carpet stops short of the wall exposing bare wooden floorboard. The carpet and other items in the room helps keep the echo to a minimum.
- There are two dining type chairs, one of which has arms.
- There is natural light but the room remains dark, the lighting is supplemented by uplighters.
- The other door on the eastern wall leads into a short passageway, 1.3m long, the door exiting the Discovery room is 920mm wide and the one entering the Portrait Room is 1m wide.
- **The Portrait Room** is carpeted throughout, the carpet stops short of the wall exposing bare wooden floorboard. The carpet and other items in the room helps keep the echo to a minimum.
- There is natural light through two large windows in the room; this light is supplemented by two rows of ceiling mounted LED lights.
- There is a large turret type construction in the middle of the floor; there is sufficient room for a wheelchair to move around the room. There are stools in this room but have no backs or arms.
- In the southern wall of the room is a door leading into the Landscape Room which is 1m wide.
- **The Landscape Room** is carpeted throughout, the carpet stops short of the wall exposing bare wooden floorboard. The carpet and other items in the room helps keep the echo to a minimum.
- There is natural light through two large windows in the room; these are in general kept closed as the room is used to show a video presentation. There are two rows of ceiling mounted LED lights but the room remains dark. There are two bench seats in this room, neither have backs or arms.
- There are two further doors in the Landscape Room, one which leads back to the main corridor and is 1.06m wide and one into our recreated World War II hospital ward; this door is 1m wide.
- **The WWII room** has a bare wooden floor, the fixtures and fittings do help reduce the level of echo in the room.
- The room has a large window which provides a good level of natural light; it is supplemented by low energy bulbs in wall lights. There is an office desk chair in the room with arms.

- The door out of this room back onto the main first floor corridor and is 1m wide. Once back on the corridor the visitor route continues by turning left, the door is 1m wide; this is also the corridor that leads to the lift.
- **The corridor** has no natural light and is lit by low energy bulbs in wall lights. There is a carpet runner down the centre of the corridor which is 9m long.
- There is a room 4.5m along the corridor which leads into the **West Bedroom**; the door is 820mm wide. This room is well lit by natural light and is supplemented by low energy bulbs in wall lights. This room is predominately for children's activities. There are seats available in this room without arms.
- At the end of the corridor is the **passenger lift**, care will need to be taken as the entry/exit door for this floor is at 90° to the entry/exit door on the ground floor and basement.
- The corridor turns left and brings you onto the landing area of the Servants Stairs; there is normally no visitor access on these stairs.
- To the right of the stairs is a door leading into the **China Passage Gallery**, the door is 860mm wide. There are no seats along the China Passage.
- There is a short platform which brings you to a set of twelve steps, 810mm wide, with a handrail on each side 890mm high.
- The China Passage leads via stairs to the shop and exit. The corridor is in two sections; the first section is 12m long and turns through 90° to pass through a door 800mm wide. The second section is 10m long, at the end of the corridor there are two steps that take you onto the corridor towards the stairs to take you down to the shop and exit; the door is 800mm wide.
- The corridor has several windows but the nature of the surrounding buildings means that the corridor is supplemented by additional LED bulb lighting.
- **The China Passage** leads into the East Wing of the property; the first floor houses the Dinefwr and Carmarthenshire Portfolio staff.
- The visitor route continues down a set of wooden steps 2m from the China Passage door, they are in three sections, eight steps, a platform, eight steps a platform, eight steps and you are on the ground floor. The route continues by turning left through the door in front which is 980mm wide.
- **The shop** is 5m along the corridor and is the first door on the left; the door into the shop is 920mm wide.
- The floor of the shop is wooden floor boards; there is virtually no echo in the room due to the amount of fittings and merchandise in the room. The first room of the shop has a central island with a clearance of more than 1200mm on three sides and 1000mm on the fourth; the rest of the displays in this room are against the wall.
- The payment desk is 930mm high with a shelf at 760mm high, staff will fetch items down for visitors to see and provide any information on products or prices required.
- There is natural light in the room and this is supplemented by fluorescent ceiling lights.
- There is a second room to the shop which is entered through a door 850mm wide, there is a window but the light is supplemented by a low energy light bulb. This room has a clear path through for wheelchairs but does not have 1200mm clearance around the display.
- The final room is the gallery; the door is 820mm wide. There is a reasonable level of natural light but this is supplemented by LED spotlights to help highlight the items displayed on the wall. There is a central display table with a 1200mm clearance around it.
- There is a door in the east wall which leads into the Inner Courtyard, the door is 910mm wide, there are two steps to the door level and one to exit into the courtyard.
- Visitors in wheelchairs or with mobility issues who find steps difficult can enter the **East wing** through a set of double doors 1.46m wide. The double doors lead into a corridor; the shop entrance is 11m from these doors.

- The floor of the corridor is quarry tiles and is a good surface. There are two small windows in the double doors which don't supply sufficient natural light. Additional lighting is provided by ceiling mounted low energy bulbs in the corridor.
- **The Old Kitchen** can be accessed from this corridor, and is 6m from the entrance to the shop. The door into the kitchen is 1.04m wide and has a 60mm step down into the room.
- The room has a quarry tile floor which is generally very good. There are large windows which provide a large amount of natural light which is supplemented by low energy bulb lighting.
- There is a door which leads from the kitchen into the courtyard and is 920mm wide but has a 220mm step from kitchen floor level to the courtyard level.

- **Inner Courtyard**
 - **The Inner Courtyard** is a large open space surrounded on four sides with buildings; the floor is of compacted gravel.
 - The courtyard is accessed via the **Coal Passage** with toilet facilities for people with disabilities. The length of the passage is 7m; the floor is of cobble stones and has some deep depressions which can cause problems.
 - There are two rooms which lead off the courtyard that can be accessed from within the east wing; these are the shop and Old Kitchen.
 - Other rooms that are available in the courtyard and accessed only from there are the Old Laundry and the Pre-loved Bookshop.
 - **The Pre-loved bookshop** is to the left, 10m from the passageway, with two stone steps from the path into the room.
 - The path from the passageway to the bookshop is stone paving slabs which are uneven in places and can be slippery when wet. The bookshop is carpeted, with some natural light, the majority of the light is provided by fluorescent strip lights.
 - There are seats available and a hot drink vending machine within the room. Due to the furnishings there is almost no echo in the room.
 - **The Old Laundry** is in the range of buildings opposite the Coal Passage, the door in is 980mm wide.
 - Inside is a ramp that rises in two sections, the first is 5m long * 1.18m wide at a gradient of 1:28. The second rise is 900mm long * 1.18m wide at a gradient of 1:18. There is a handrail on the right as you go up the ramp at a height of 870mm.
 - It is also possible to get onto the floor level of the room via two steps; these are to the right as you come through the door, they are 1.4m wide with each step being 115mm high.
 - The room is very large with no furnishings to deaden the effect of echo. There is plenty of natural light in the room and there is additional LED spotlights available.

- **Catering**
 - The main catering offer is in the **Billiard Tea Room** which is located in the annexe of Newton House and located on the ground floor.
 - The counter is over 850cm high. Catering team members are available to assist with service and carrying trays.
 - The width between the tables varies.
 - Members of visitor groups can sit at tables if queuing is difficult and one member of the group can ask catering staff for assistance.
 - Menus are available in standard print and there are straws available.
 - The cafe is divided into two sections, the servary and the main seating area, the doors from the seating area are 970mm wide and the door nearest the window is 1.02m wide.

National Trust

- The floor throughout the tea room and server is wooden boards, there are 4 woven tapestry wall hangings but this does not have a major effect on minimising echo and volume of noise
- The tea room and servary have large windows providing natural light which is supplemented by ceiling and wall lights which use low energy light bulbs.
- The chairs are wooden with no cushions, the legs of the chairs and tables have 'rubber feet' on to minimise noise.
- **The Castle Walk** café is on route to the Board Walk and Castle and is 418m from the VIP, serving hot and cold drinks, ice creams and a small selection of cakes and sandwiches.
- The café is open 363 days a year; only closed on Christmas Eve and Christmas Day. Opening times are 11.00-16.00, and 10.00 – 17.30 during the School Summer holidays.
- There is a short 1:8m slope to a concrete hard standing before entering the café. The doorway is about 1.2m wide which leads into the seating area approximately 4.7m wide * 6.5m long.
- The counter is over 850cm high. Catering team members are available to assist.
- There is seating inside the café; the width between the tables varies.
- There is no induction loop available.
- The floor and wall surfaces are cement and stone and the lighting is by fluorescent bulbs in the roof space.
- There are no large print or Braille menu's available, but staff and volunteers will explain what is available. Straws are available.



Garden

- The **Garden** is located on the western side of the house; access to it is by the gravel area to the north of the house and following it around. Access to the garden can also be gained from the Inner Hall of Newton House through a set of double doors; the doors are 980mm wide; if the doors are closed a member of staff will open them on request.

- The doors lead to a covered area beneath the Conservatory, this area has two columns making three spaces, the one directly opposite the door has a ramp 1.5m wide* 2.0m long with a gradient of 1:8, this gradient is more than recommended but extending it



would have H&S implications.

- There is a set of two steps that take you from the gravel area down to the area around the fountain still pool.
- There are two park benches on the north side of the garden
- The garden has gravel paths on the North, South and East side, the southern end has a set of uneven stone steps leading up to the Summer House. The arrangement of steps is 4 steps, a platform, and 2 steps onto a gravel area leading to the Summer House.
- The **Summer House** has a step of 100mm into it. There is a bench seat the entire length of the building. The gravel area extends west of the Summer House to the Ha-Ha wall.
- Opposite the entrance to the summer house is a set of uneven stone steps leading down to the fountain. The arrangement of steps is 7 steps, a platform, and 2 steps onto a gravel path around the fountain. There is a steep grass bank at the southern end of the garden.

The Fountain bowl is located in the middle of the garden within a still pool which has a short stone wall surrounding it; the pool is currently empty. The base of the pool is made of paving slabs which are uneven and broken in places.

- The area around the still pool is gravel. Between the ground level around the house and the gravel area around the fountain still pool is surrounded by grass, some level and some at a slope.
- The west end of the house is a D shaped open grass area, there is a wall either side and this surrounds the Ha-Ha. The grassed area is not fenced and there is a drop of approximately 1.5m



Contact details for more information

Stephen Batsford

House Manager

T: 01558 825916/07867 537 429

E: Stephen.batsford@nationaltrust.org.uk

Date: August 2015

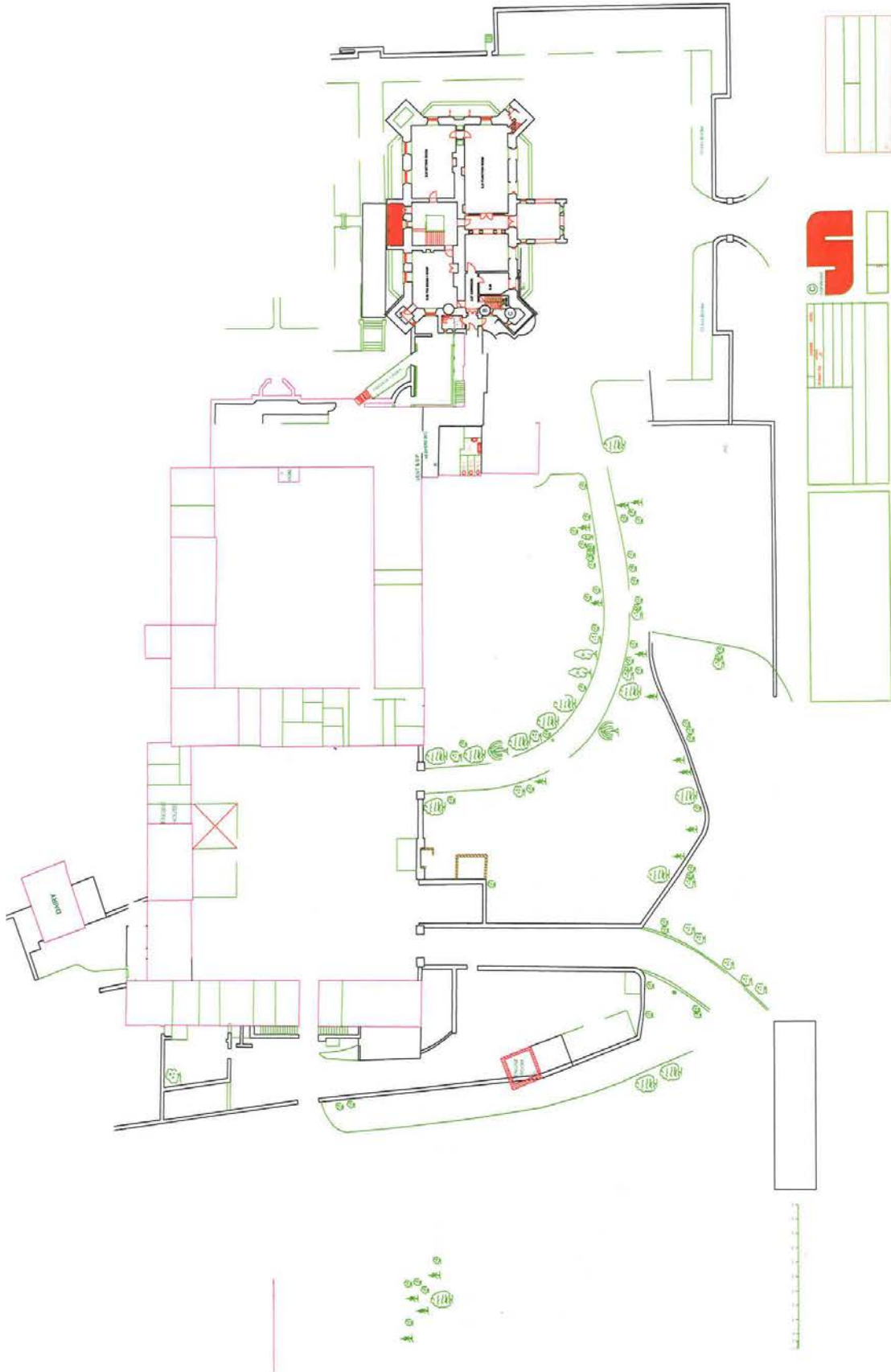
This document to be reviewed : January 2017

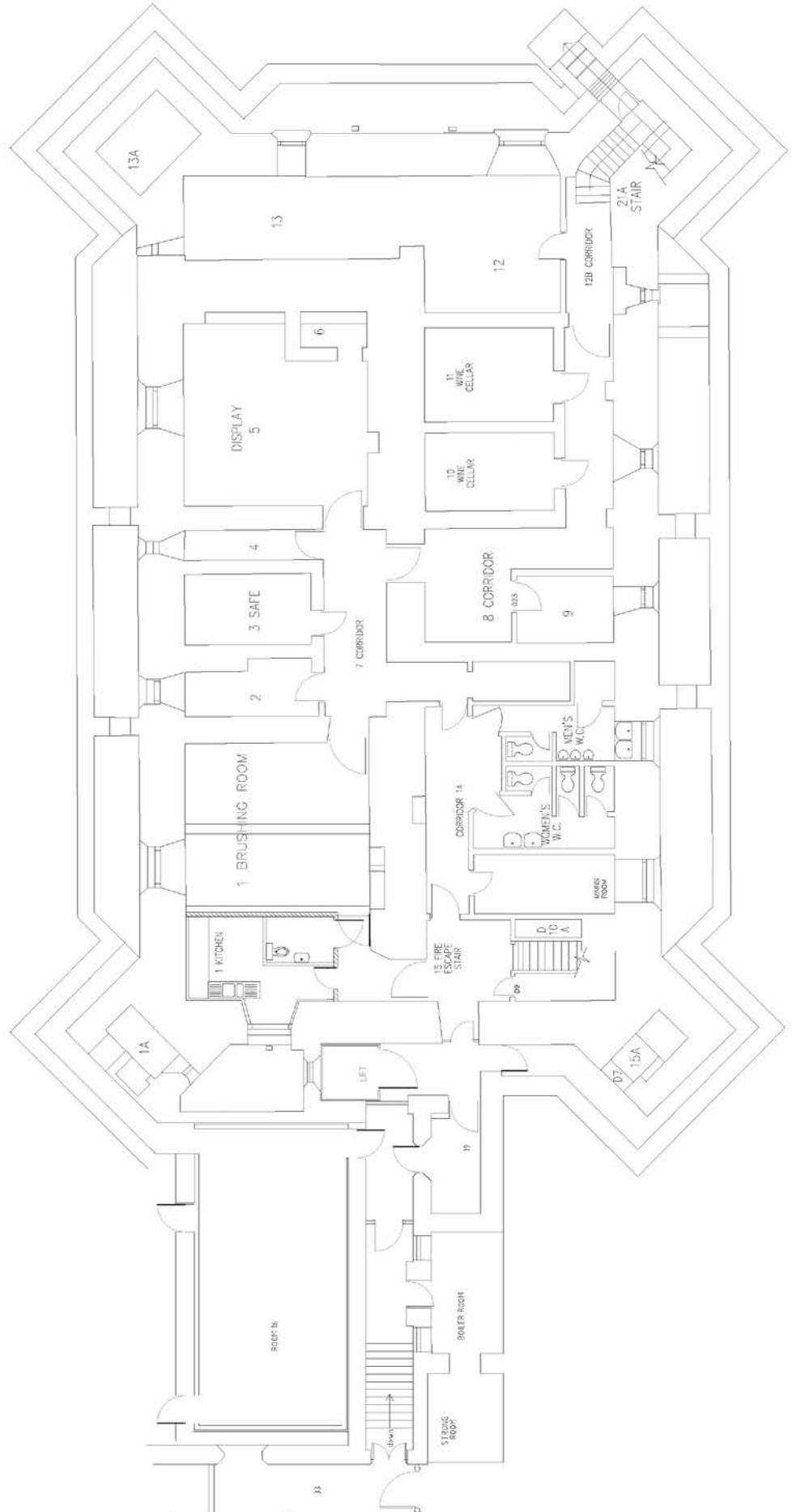
Map

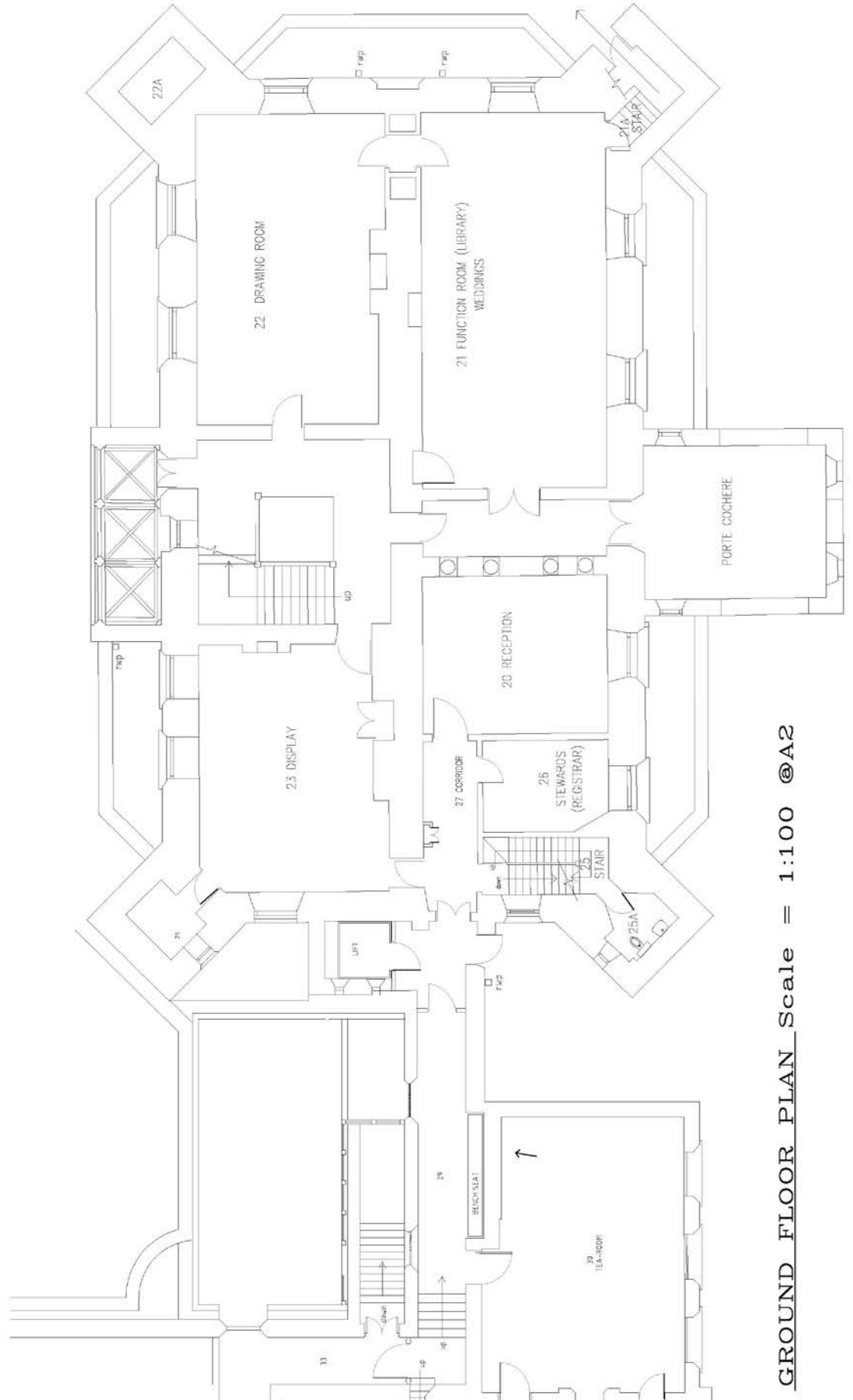
Add any maps with access features marked to the back of the Statement



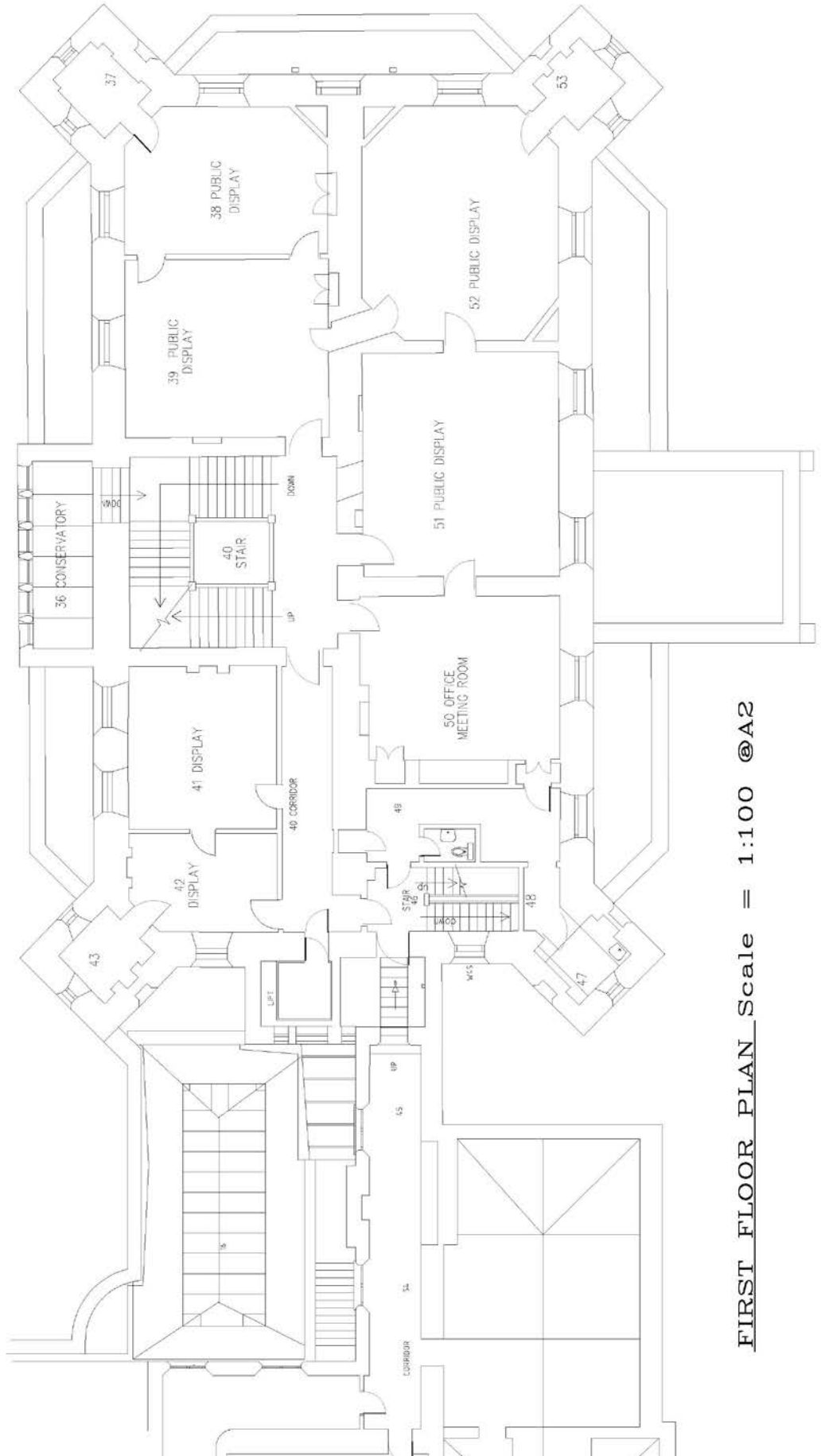
National Trust







GROUND FLOOR PLAN Scale = 1:100 @A2



FIRST FLOOR PLAN Scale = 1:100 @A2