

Applying for Education Group Membership

Type of organisation

(Please tick as appropriate)

- Primary
- Middle
- Secondary
- Sixth form/FE College
- Youth Group/Organisation (whose members are in full time education)
- Special educational needs/disability
- Higher Education
- Not for profit field study centre
- Home-educators

Subscription fees for 2017

(inclusive of VAT)

Subscriptions cover one year from the month of joining

Number on Roll	Rate
Home-educating family	£43.25
Under 50	£43.25
51 - 100	£72.25
101 - 200	£87.50
201 - 500	£92.75
Over 500	£107.25
Tertiary/Field Study	£137.00

We will not share your information with any other organisations.
Please allow 21 days for processing.

Subscription and payment details

I enclose remittance for £

(All cheques must be made payable to National Trust)

Signature

Date



Education Group Membership 2017



National Trust



For alternative formats, please call us on 0344 800 1895 or email enquiries@nationaltrust.org.uk

© National Trust Images/Mark Bolton/David Levenson/John Millar/Arnhel de Serra/Paul Harris
Printed on 100% recycled paper. Please recycle this leaflet after use.
© National Trust 2017. The National Trust is a registered charity, no. 205846



Learning and the National Trust

The National Trust is recognised as being Britain's biggest classroom, and is one of the largest educational resources in the world. We care for countryside, coastline, historic houses, castles, industrial monuments and mills, churches and chapels. This means we can offer you a wide range of fantastic learning opportunities at a wealth of amazing places.

The Education Group Membership Scheme

Membership is open to not-for-profit education groups, whose members, pupils or students are in full-time education.

Education Group Membership is specially designed to allow education groups free entry to properties owned by the National Trust.

Home education

We also extend Education Group Membership to home-educating families. So that we can distinguish between this membership category and our standard Family Membership, home-educating families are entitled to use their Education Group Membership in normal school hours during school term time only. We are unable to extend this membership category for home-educating families to cover visits made during Bank Holidays, weekends or school holidays.



Benefits of Education Group Membership

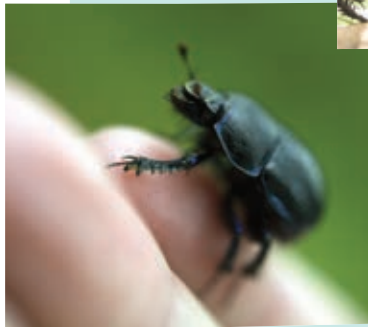
- Free planning and preparation visits to sites for group leaders. These preliminary visits should be booked in advance.
- Membership pack, which includes the annual handbook.
- The National Trust *Magazine* full of news, inspiration and ideas.

Terms and conditions

The National Trust welcomes education groups to its places.

To gain the most from your visit the following conditions apply:

- All visits must be booked at least 7 days in advance and group leaders should present a valid Education Group Membership card(s) when visiting to avoid normal admission fees being charged.
- Where special education activities are offered by a place, additional charges may apply.
- For your legal protection, all education groups (including home-schooling businesses) must provide evidence that they have public liability insurance with a minimum £5M indemnity limit when they take out Education Group Membership, and must ensure their insurance cover is valid when they visit. This doesn't apply to home-educating families when parents are visiting solely with their own children.



Group supervision

For primary aged children we require one accompanying adult for every eight pupils. For secondary and tertiary we require one adult for every fifteen pupils or students. For all educational organisations a minimum of two supervising adults per group are required.

Groups with additional needs or undertaking specialised activities need to have higher numbers of accompanying adults, to be confirmed with the place at the time of booking. For home-educating families Education Group Membership covers up to two accompanying adults for one family group. Any further adults will be required to pay normal admission rates.

The number and size of groups admitted to a site at any one time are at the discretion of the property manager.



Please complete this form in **block capitals** and **black ink**, attach your payment and send it together with letter-headed notepaper confirming the not-for-profit status of your organisation to:

National Trust
PO Box 574, Manvers, Rotherham, S63 3FH
Email: enquiries@nationaltrust.org.uk
Telephone: 0344 800 1895

Please tick to confirm that

- Your students/members are in full-time education (either with this group or elsewhere), and
- You are a not for profit organisation, and
- You have public liability insurance with a minimum indemnity limit of £5M and enclose evidence, or
- You are an LEA school covered by your LEA insurance, or
- You are a home-educating family who will visit solely with your own children

Organisation details

Name of organisation *(if applicable)*:

Address:

..... Postcode:

Telephone Number:

Email:

Number of students/members on roll/
home-educating family members:

LEA *(if applicable)*:

Contact details

Dr/Mr/Mrs/Miss/Ms: Initials:

Surname:

Job Title: