

National Trust Cottages Access Statement

Cottage details: The Old Coastguard Station
Brochure Ref: 020018

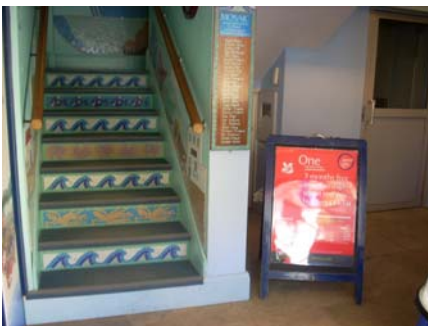


Introduction

The Old Coastguard Station stands right down at the bottom of this unspoilt, picturesque 17th-century fishing village right by the sea. Originally an inn and a coastguard lookout station, the Trust bought the building in 1998 and converted it to holiday use in 2000, but prior to that in recent years the building had served as a marine life study centre. The ground and first floor house Trust interpretative displays and education rooms. The holiday home is completely separate on the second floor with stunning sea views.

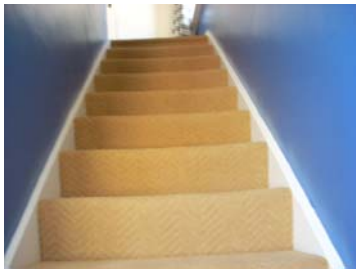
The Cottage is arranged as follows:

- External door, inner lobby to shop, stairs to first floor and access to apartment



First Floor:

- Front door and entrance hall with 13 steps to the second floor



Second floor

- Landing, bathroom, bedroom, open plan lounge/diner/kitchen

Pre-Arrival

- See the main webpage for booking and location details
- Please contact us prior to booking if you have any specific access requirements
- Directions provided with booking

Arrival & Parking Facilities

- No parking facilities at the apartment but guests can drop off
- Parking is at the top of the hill

Getting in (and out) of the cottage

- Two flagged uneven steps up to main door with metal threshold
- The door opens to 590mm wide

Getting around the cottage

- Old Coastguard Station main door
- Flagged floor
- Steps x 15 at 188mm high with banister both sides
- Fire door to right 780mm
- Apartment door 680mm
- Lobby door 760mm to steps
- Steps 13 x 190mm high with banister on left
- Landing 920mm wide max
- Cupboard with washing machine and tumble dryer
- Floor surfaces are lino and carpet

Kitchen



- Door 680mm
- Workshop height 910mm
- Electric cooker
- Microwave, fridge freezer, washing machine, tumble dryer, cordless kettle and toaster

Dining/Lounge



- Dining room table 760mm and two chairs 460mm
- 2 seater sofa 450mm and 2 occasional chairs 400mm high
- Coffee table and sideboard
- TV, DVD

Bedroom

- Door opens to 750mm
- 1500mm bed and 580mm high
- Wardrobe and dressing table

Bathroom

- Door opens to 680mm
- Bath 550mm high with shower over, toilet 450mm, sink 810mm

Evacuation in an emergency

- Please contact the Cottage Supervisor if you require loan of an under-pillow alarm

Additional Information

- Landline payphone, no WiFi
- Assistance dogs are welcome at all our cottages
- In the event of a fire, it is the responsibility of the guests to evacuate themselves
- Vibrating fire/smoke detectors are available if requested at time of booking. Please contact us if you have any other specific access requirements in this respect.

Facilities at all cottages

In addition to the standard equipment and facilities, each cottage is equipped with the following:

- Cordless kettle
- Chair with armrests in dining room and living room
- Good reading light
- Large handle vegetable peeler
- Easy tin opener
- Non-slip mat for bath/shower
- Non-slip place mat
- Easy jar opener
- Information in alternative formats (on request)

Specialist equipment

Other specialist equipment such as wheelchairs, bath seats, toilet frames etc may be available for loan or purchase from the local Red Cross loan centre. Please check this out before booking the Cottage and contact us if you require further information.

<http://www.redcross.org.uk/standard.asp?id=89425>

Future Plans to improve Access to NT Holiday Cottages

- We are currently in the process of writing access statements for all our holiday cottages and improving access over time for all our guests. All feedback is very helpful in informing us of ways in which we can improve access to all our cottages. We welcome any comments or ideas from you about access at this cottage and thank you for taking the time to do this. Please do this in the most convenient way for you. See contact details below or information on website.

About the Access Statement

- This Access Statement is intended to provide key information about the cottage that may be particularly relevant to guests with disabilities. Please contact us prior to booking if you would like information that is more specific and we will be happy to oblige.

Email: cottages@nationaltrust.org.uk

Phone: 0844 8002070

Access for All at the National Trust

- The Access for All office works to improve access at all National Trust cottages and properties. The office welcomes comments and ideas on improving access.

Phone: 01793 818531

Email: accessforall@nationaltrust.org.uk

