

National Trust

National Trust Cottages Access Statement

Cottage details: Low Peak Cottage

Brochure Ref: 020012



Introduction

This stone cottage has uninterrupted views across Robin Hood's Bay and sits in its own garden surrounded by farmland.

The cottage is arranged as follows:

Ground Floor:

- Entrance hall, Lounge, Dining room, Kitchen, Cellar

First Floor:

Hall, Two bedrooms, bathroom with shower and WC

Pre-Arrival

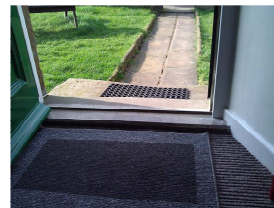
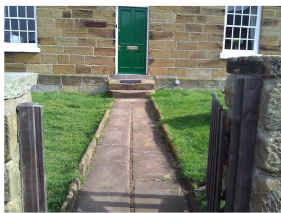
- See the main webpage for booking and location details.
- Please contact us prior to booking if you have any specific access requirements.
- Directions provided with booking
- Please bring a torch if arriving after dark.

Arrival & Parking Facilities

- Off road parking for one car accessed through a five bar gate at side the cottage on hard standing, also one space directly outside property.

Getting in (and out) of the cottage

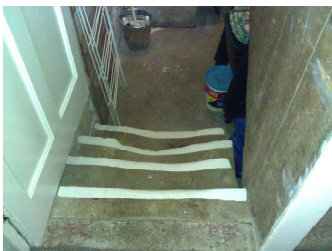
- There is a wooden gate 860mm wide leading to the cottage.
- Uneven stone flagged path 920mm wide to front door
- Front door 3 x steps - 1x 170mm 1 x 180mm 1 x 140mm
- The front door is 810mm with a 20mm high threshold. Immediately inside the front door is a hall which is 200mm wide by 155mm maximum
- There are three doors opening off the hall to lounge, dining room and cellar width 730mm
- There is a back door 870mm wide accessed by 2 stone steps 1x 170mm 1x 200mm



Getting around the cottage

Ground floor:

- Level carpeted hall.
- 1 x step in hall at inside of front door 30mm
- 1 x step between hall and dining room 50mm
- 1 x step at kitchen entrance from dining room 10mm
- 1 x step at back door exit from kitchen 20mm
- 4 x steps to cellar 1x 80mm, 1x 150mm, 1x 190mm, 1x 200mm These steps are old and are worn in the middle



Internal door widths vary from 580mm to 770mm

First floor:

- Stairs to first floor curved at the top



- Bathroom, 1 twin bedroom, 1 double bedroom.
- Circulation space in all rooms except the twin room is good

Hallway:

- Carpeted floor
- Payphone at a height of 1320mm

Sitting Room



Views out over surrounding countryside

- One Sofa and two chairs with arms seat height 450mm
- Occasional tables x 2, TV cabinet with TV and DVD, standard lamp

Dining Room



- Side table, display cabinet, 2 x occasional tables, sideboard, dining room table and four chairs 490mm, stereo system, 1x standard lamp
- Views over countryside

Kitchen



- Height of worktop is 920mm
- The door from dining room is 720mm wide
- Kitchen is fitted with cooker with electric hob, fridge freezer, dishwasher, microwave, washing machine and dishwasher. Cordless kettle and toaster.
- Door to outside.
- Views over countryside

Stairs

- 16 stairs 180mm height, 720 width, banister on right hand side. Stairs curve to the left going up to the top
- Landing minimum width 680mm
- Views over countryside

Bathroom



- The bathroom is the first room at top of stairs
- WC, basin and bath with shower
- The WC is 440mm high, basin 820mm high, bath 570mm high, 1680mm length, 720mm wide
- Views over countryside

Twin Bedroom



- Two single beds 550mm l x bedside table, chest of drawers, 2 x side lights
- Views over countryside

Double Bedroom



- One double bed with 1500mm mattress, height of bed 650mm
- Occasional chair 330mm
- 2 x bedside tables, 1 x wardrobe, 1x pot cupboard, 1 x bedroom cabinet, 3 x side lights
- Views over countryside

Garden

- Uneven grassed surface some stones
- Bench seating height 540mm table height 780mm width
- Views over countryside

Additional Information

- Assistance dogs are welcome at all our cottages
- In the event of a fire, it is the responsibility of the guests to evacuate themselves. Vibrating fire/smoke detectors are available if requested at time of booking. Please contact us if you have any other specific access requirements in this respect.
- Landline payphone, no WIFI

Facilities at all cottages

In addition to the standard equipment and facilities, each cottage is equipped with the following:

- Cordless kettle
- Chair with armrests in dining room and living room.
- Good reading light
- Large handle vegetable peeler
- Easy tin opener
- Non-slip mat for bath/shower
- Non-slip place mat
- Easy jar opener
- Information in alternative formats (on request)

We aim to provide these items in all cottages but please check when booking as to their availability and to check if new items have been added to the list.

Specialist equipment

Other specialist equipment such as wheelchairs, bath seats, toilet frames etc may be available for loan or purchase from the local Red Cross loan centre. Please check this out before booking the Cottage and contact us if you require further information.

<http://www.redcross.org.uk/standard.asp?id=89425>

Future Plans to improve Access to NT Holiday Cottages

- We are currently in the process of writing access statements for all our holiday cottages and improving access over time for all our guests. All feedback is very helpful in informing us of ways in which we can improve access to all our cottages. We welcome any comments or ideas from you about access at this cottage and thank you for taking the time to do this. Please do this in the most convenient way for you. See contact details below or information on website.

About the Access Statement

- This Access Statement is intended to provide key information about the cottage that may be particularly relevant to guests with disabilities. Please contact us prior to booking if you would like information that is more specific and we will be happy to oblige.

Email: cottages@nationaltrust.org.uk

Phone: 0844 8002070

Access for All at the National Trust

- The Access for All office works to improve access at all National Trust cottages and properties. The office welcomes comments and ideas on improving access.

Phone: 01793 818531

Email: accessforall@nationaltrust.org.uk

October 2012