

Cottage Ref: 011086

**Helston Lodge**

Penrose Hill  
HELSTON  
Cornwall

**Introduction**

- Helston Lodge is a traditional stone built, detached, gate house on the Penrose estate. It has far reaching rural views over the Loe pool to the front.
- The Cottage is arranged as follows:

**Ground Floor:**

- Lounge, Kitchen/Diner, Dining Hall, Laundry/Cloakroom and Rear Lobby.

**First Floor:**

- Bathroom and two Double Bedrooms.

**Pre-Arrival**

- See the main webpage for booking and location details.
- Please contact us prior to booking if you have any specific access requirements.
- Directions provided with booking

**Arrival & Parking Facilities**

- The cottage is on the Penrose estate which is off the B3304 Helston to Porthleven road. The cottage is about half a mile from the main road but the estate lane is a generally good quality one. The parking area is the hard standing which is immediately surrounding the front and sides of the cottage.



### Getting in (and out) of the cottage

- There is a granite chipping pathway all round the cottage. The combination key safe for the rear door is on the wall to the right of the door.
- There is an outside light but it is recommended to bring a torch to set the correct lock combination on arrival. Keys to be returned to safe on final departure.



### Getting around the cottage

#### Ground floor:

- Rear door opens into small lobby with three solid, wooden doors.
- One door opens inwards to laundry/cloakroom.
- One door opens inwards to lounge. Front door in lounge opens to exterior, canopied porch.
- Other door opens to dining hall with door to kitchen/diner and stairway up to first floor.

#### First floor:

- Turning stairway up from dining hall to glazed panel door at entrance to landing. Three solid, wooden doors off landing.

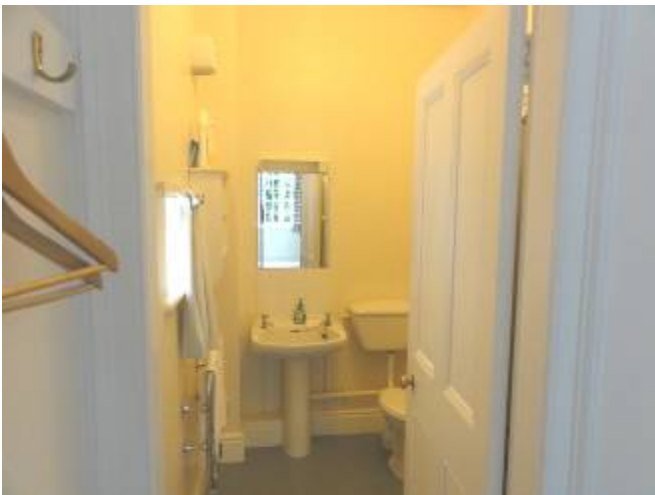
- One door to bathroom.
- Other doors to east and west double bedrooms. All open inwards.

## Rear Lobby – Single aspect.



- 740mm wide, part glazed, rear door opens inwards into lobby.
- Vinyl flooring.
- Ceiling light. Outside light.
- Wall mounted coat rack with 4 hooks.
- Wooden easy chair with cushion seat (400mm seat H).
- Doors to laundry/cloakroom, lounge and dining hall.

## Laundry/Cloakroom – Single aspect.



- Solid wooden door 700mm wide opens inwards from lobby.
- Vinyl flooring.
- Ceiling light.
- Mirror with light and shaver power point.
- Electric towel rail.
- Window, with deep sill, to rear aspect (230mm W x 300mm H).
- W.C. (420mm seat H).
- Wash basin (760mm H).
- Washing machine with Tumble dryer above (900mm H).

## Lounge – Dual aspect.



- Solid wooden door 850mm wide opens inwards from lobby.
- Fitted carpet flooring.
- Two ceiling lights (one on 2-way switch). Two table lamps and one standard lamp.
- Two night storage heaters. Two convector heaters and an open fireplace.
- Bay window to east aspect (2,000mm W x 1,400mm H).

# National Trust

- Centre panel of front door opens to reveal glazed panel with south aspect.
- Three seater settee (440mm seat H).
- Two wing back chairs (440mm seat H).
- Writing desk (1,200mm W x 510mm D x 580mm knee H).
- Wooden chair with cushioned seat (480mm seat H).
- Commode storage box (540mm W x 760mm D x 490mm H).
- Octagonal occasional table (800mm Dia x 720mm H).
- Round side table (460mm Dia x 500mm H).
- T.V. DVD player and VCR/player.
- Front door opens inwards into lounge and is two steps (170mm H) down to open exterior porch.



## Dining Hall – Dual aspect.





- Solid wooden door 850mm wide opens inwards from lobby.
- Fitted carpet flooring.
- Ceiling light on 2-way switch. Table lamp.
- Night storage heater. Convector heater.
- Window, with deep sill, to front aspect (1,400mm W x 1,200mm H).
- Window, with deep sill, to west aspect (1,400mm W x 1,200mm H).
- Drop leaf dining table (1,030mm W x 950mm D *open* x 620mm knee H).
- One dining chair with cushion seat (480mm seat H).
- Two dining “carver” chairs with cushion seats (480mm seat H).
- Sideboard (1,030mm W x 440mm D x 810mm H).
- Radio/CD player.
- Stairway to first floor.
- Door to kitchen/diner.

## **Kitchen/Diner – Single aspect.**





- Solid wooden door 720mm wide opens inwards from dining hall.
- Vinyl flooring.
- Ceiling light on 2-way switch. Three adjustable spot-lights. Three under cupboard worktop strip lights.
- Night storage heater.
- Window, with deep sill, to east aspect (1,400mm W x 900mm H).
- Kitchen floor cupboards with drawers under 910mm High worktops.
- Wall cupboards 425mm above worktops.
- Pine “kitchen” table (900mm W x 910mm D x 650mm knee H).
- Two “kitchen” chairs (470mm seat H) and one “carver” 440mm seat H).
- Fridge, Freezer, Dishwasher, Toaster, Microwave and Kettle.
- Electric cooker with ceramic hob and extractor hood.
- Solid wooden door 720mm wide to west courtyard opens inwards into kitchen.



## Stairway to first floor.



- Turning stairway, with banister 900mm H, from dining hall to first floor landing.
- Fitted carpet.
- Four steps (650mm wide x 160mm H) to half landing. Thirteen more steps to top.
- Step, (200mm H) up to glazed panel door 680mm wide onto landing.
- Ceiling light on 2-way switch.

## First floor Landing.



- Fitted carpet flooring.
- Ceiling light. Natural light from glazed panels over bathroom and one bedroom doors.
- Emergency torch.
- Doors off to bathroom and both bedrooms.



## Double Bedroom (East) – Dual aspect.



- Solid wooden door 800mm wide opens inwards from landing. Clear glazed panel above.
- Fitted carpet flooring.
- Ceiling light. Pair of table lamps.
- Night storage heater. Convector heater.
- Window to east aspect (900mm W x 900mm H) with seat below (520mm seat H).
- Window to front aspect (900mm W x 900mm H) with seat below (520mm seat H).
- Built-in wardrobe (820mm W).
- Pair of Wooden rocking chairs with cushion seats and backs (390mm seat H).
- Oval bedside table (670mm W x 440mm D x 700mm H).
- Kidney bedside table (670mm W x 440mm D x 700mm H).
- Chest of three drawers (840mm W x 510mm D x 850mm H). Pull out leaf to top.
- Double bed (1,900mm W x 2,000mm L x 600mm H).

## Bathroom – Single aspect.



- Solid wooden door 800mm wide opens inwards from landing. Clear glazed panel above.
- Vinyl flooring.
- Ceiling light. Light/shaver socket above mirror.
- Electric towel rail.
- Window to rear aspect (900mm W x 900mm H) with seat below (460mm seat H).
- W.C. (430mm seat H).
- Wash basin (760mm H).
- Bath (690mm W x 1,680mm L x 530mm H).
- Electric shower over bath with safety glass side panel.

## Double Bedroom (West) – Dual aspect.



- Solid wooden door 680mm wide opens inwards from landing.
- Fitted carpet flooring.
- Ceiling light. Table lamp.
- Night storage heater and Convector heater.
- Window to west aspect (900mm W x 900mm H) with seat below (480mm seat H)

## Double Bedroom (West) – cont'd.

- Window to front aspect (800mm W x 800mm H) with seat below (520mm seat H)
- Built-in wardrobe (580mm W).
- Wooden bedside chair with cushion seat (440mm seat H).
- Chest of three drawers (900mm W x 450mm D x 800mm H).
- Bedside cabinet (380mm W x 330mm D x 720 H)
- Double bed (1,500mm W x 2,000mm L x 600mm H).

## Garden



- The large garden is mainly to the east side of the cottage and is different areas of lawn with rustic gates and fences. It is terraced but the sections are more or less level. There is a picnic table on one of the lawns close to the cottage. The rotary dryer is in the west courtyard.

## Additional Information

- Assistance dogs are welcome at all our cottages
- In the event of a fire, it is the responsibility of the guests to evacuate themselves. Vibrating fire/smoke detectors are available if requested at time of booking. Please contact us if you have any other specific access requirements in this respect.

## Facilities at all cottages

In addition to the standard equipment and facilities, each cottage is equipped with the following:

- Cordless kettle
- Chair with armrests in dining room and living room.
- Good reading light
- Large handle vegetable peeler
- Easy tin opener
- Non-slip mat for bath/shower
- Non-slip place mat
- Easy jar opener
- Information in alternative formats (on request)

We aim to provide these items in all cottages but please check when booking as to their availability and to check if new items have been added to the list.

## Specialist equipment

Other specialist equipment such as wheelchairs, bath seats, toilet frames etc may be available for loan or purchase from the local Red Cross loan centre. Please check this out before booking the Cottage and contact us if you require further information.

<http://www.redcross.org.uk/standard.asp?id=89425>

## Future Plans to improve Access to NT Holiday Cottages

- We are currently in the process of writing access statements for all our holiday cottages and improving access over time for all our guests. All feedback is very helpful in informing us of ways in which we can improve access to all our cottages. We welcome any comments or ideas from you about access at this cottage and thank you for taking the time to do this. Please do this in the most convenient way for you. See contact details below or information on website.

## About the Access Statement

- This Access Statement is intended to provide key information about the cottage that may be particularly relevant to guests with disabilities. Please contact us prior to booking if you would like information that is more specific and we will be happy to oblige.

Email: [cottages@nationaltrust.org.uk](mailto:cottages@nationaltrust.org.uk)

Phone: 0844 8002070

## Access for All at the National Trust

- The Access for All office works to improve access at all National Trust cottages and properties. The office welcomes comments and ideas on improving access.

Phone: 01793 818531

Email: [accessforall@nationaltrust.org.uk](mailto:accessforall@nationaltrust.org.uk)

July 2011