

Cottage Ref: 011041

**Inglewidden Vean**  
Cadgwith  
THE LIZARD  
Cornwall



### Introduction

- Inglewidden Vean is part of the former Inglewidden farm complex. It is a traditional stone built, mid-terraced farm cottage. The South West Coast Path is just yards away. The views from the rear windows overlook the sea at Cadgwith.

- The Cottage is arranged as follows:

#### **Ground Floor:**

- Hall, Lounge/Dining room, Kitchen.

#### **First Floor:**

- Bathroom and three bedrooms, Double, Twin and a Single.

### Pre-Arrival

- See the main webpage for booking and location details.
- Please contact us prior to booking if you have any specific access requirements.
- Directions provided with booking

### Arrival & Parking Facilities

- The cottage is off the main road to Cadgwith, down a single lane roadway. There are many twists and turns but also a good number of passing places. The communal car parking is a compacted earth and chippings area above the front of the cottage. It is allowed to take a

vehicle down the wide pathway to the right-hand side of the terrace of cottages for unloading only purposes.



## Getting in (and out) of the cottage

- At the bottom of the wide pathway there is a small picket fence with a gate opening onto the gravel pathway which runs across the front of the cottages. The combination key safe for the front door is on the wall to the right of the door.
- There is an outside light but it is recommended to bring a torch to set the correct lock combination on arrival. Keys to be returned to safe on final departure.



## Getting around the cottage

### Ground floor:

- Front door opens into hall with two solid, wooden doors.
- One door opens inwards to lounge/dining room other door opens inwards to kitchen.
- Stairway up to first floor.

## First floor:

- Full return stairway up from hall to half landing and then on to top landing. Four solid, wooden doors off landing.
- One door to bathroom. Other doors to twin, double and single bedrooms. All open inwards.

## Entrance Hall.



- Granite step (150mm H) up to Solid wooden front door.
- Front door 880mm wide opens inwards into hall.
- Quarry tiled and part vinyl flooring.
- Two ceiling lights on 2-way switches.
- Natural light from glazed panel above front door and window on half landing.
- Night storage heater
- Wall mounted coat rack with 4 hooks plus further 6 on wall in under stairs area.
- Fire alarm control.
- Doors to kitchen and lounge/dining room.
- Stairway to first floor.

## Lounge/Dining room – Dual aspect.





- Solid wooden door 770mm wide opens inwards from hall.
- Fitted carpet flooring.
- Night storage heater. Convector heater and an open fireplace.
- Two ceiling lights. One table lamp and one standard lamp.
- Sash window to front aspect (1,000mm W x 1,400mm H) – seat below (460mm seat H).
- Sash window to rear aspect (800mm W x 1,400mm H) – seat below (500mm seat H).
- Two, Two-seater settees (440mm seat H).
- One easy chair (450mm seat H).
- Dresser (1,600mm W x 500mm D x 800mm knee H).
- Oak dining table (820mm W x 750mm L x 720mm knee H).
- Six wooden “kitchen” chairs (460mm seat H).
- Kidney shaped occasional table (720mm W x 440mm L x 740mm H).
- Round side table (760mm Dia x 510mm H).
- T.V. DVD player.

## Kitchen – Single aspect.





- Solid wooden door 750mm wide opens inwards from hall.
- Vinyl flooring.
- Night storage heater.
- Six recessed down-lights.
- Sash window, to front aspect (900mm W x 1,400mm H) – seat below (470mm seat H).
- Kitchen floor cupboards with drawers under 910mm High worktops.
- Wall cupboards 420mm above worktops.
- Breakfast table (1,500mm W x 760mm D x 620mm knee H).
- Five “kitchen” chairs (440mm seat H).
- Fridge/Freezer, Dishwasher, Washing/Dryer machine, Toaster, Microwave and Kettle.
- Electric cooker with ceramic hob and extractor hood/lights.
- Micro Radio/CD player.

## Stairway to first floor.



- Full return stairway, with banister (900mm H), from hall to first floor landing.
- Fitted carpet.
- Seven steps (760mm wide x 140mm H) to half landing.

- Sash window to rear (800mm W x 1,300mm H) at half landing.
- Eleven more steps to first floor landing (first two narrow turning steps).
- Ceiling light on 2-way switch.

## First floor Landing.



- Fitted carpet flooring.
- Ceiling light on 2-way switch.
- Four, solid wooden, doors off – One to the bathroom, others to single, twin and double bedrooms.

## Bathroom – Single aspect.



- Solid wooden door 760mm wide opens inwards from landing.
- Vinyl flooring.
- Ceiling light. Light/shaver socket above mirror.
- Night storage heater. Electric towel rail.
- Sash window to rear aspect (900mm W x 1,300mm H).

- W.C. (410mm seat H).
- Wash basin (780mm H).
- Bath (680mm W x 1,660mm L x 530mm H).
- Electric shower over bath with safety glass side panel.

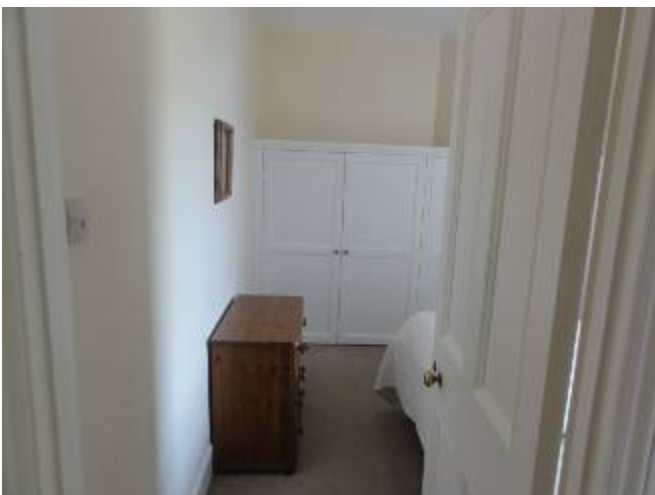
## Double Bedroom – Single aspect.



- Solid wooden door 760mm wide opens inwards from landing.
- Fitted carpet flooring.
- Ceiling light. Pair of table lamps.
- Night storage heater. Convector heater.
- Sash window with deep sill to rear aspect (900mm W x 1,300mm H).
- Built-in wardrobe (740mm W).
- Pair of bedside cabinets (370mm W x 300mm D x 680mm H).
- Chest of drawers "2 over 3" (1,020mm W x 430mm D x 1,060mm H).
- Double bed (2,000mm W x 2,000mm L x 600mm H).
- Radio/Tape/CD player.

**Twin Bedroom – Single aspect.**

- Solid wooden door 760mm wide opens inwards from landing.
- Fitted carpet flooring.
- Ceiling light. Pair table lamps.
- Night storage heater and Convector heater.
- Sash window with deep sill to front aspect (900mm W x 1,300mm H).
- Built-in wardrobe (900mm W).
- Pair of bedside tables (600mm W x 350mm D x 750mm H).
- Bow fronted chest of drawers “2 over 3” (1,100mm W x 550mm D x 1,060mm H).
- Wooden chair with cushion seat (450mm seat H).
- Two single beds (each 1,000mm W x 2,000mm L x 600mm H).

**Single Bedroom – Single aspect.**





- Solid wooden door 760mm wide opens inwards from landing.
- Fitted carpet flooring.
- Ceiling light. Table lamp.
- Night storage heater and Convector heater.
- Sash window to rear aspect (800mm W x 1,300mm H).
- Built-in wardrobe (1,400mm W).
- Chest of four drawers (800mm W x 400mm D x 700mm H).
- Bedside cabinet (460mm W x 420mm D x 550 H)
- Single bed (1,000mm W x 2,000mm L x 600mm H).

## Garden



- The large garden is at the front of the cottage and is mainly lawn with flower borders and shrubs and trees. It is slightly raised but more or less level. There are four, easy, steps (150mm H) up from the gravel path outside the front door. There is a picnic table and a rotary dryer.

## Additional Information

- Assistance dogs are welcome at all our cottages



- In the event of a fire, it is the responsibility of the guests to evacuate themselves. Vibrating fire/smoke detectors are available if requested at time of booking. Please contact us if you have any other specific access requirements in this respect.

## Facilities at all cottages

In addition to the standard equipment and facilities, each cottage is equipped with the following:

- Cordless kettle
- Chair with armrests in dining room and living room.
- Good reading light
- Large handle vegetable peeler
- Easy tin opener
- Non-slip mat for bath/shower
- Non-slip place mat
- Easy jar opener
- Information in alternative formats (on request)

We aim to provide these items in all cottages but please check when booking as to their availability and to check if new items have been added to the list.

## Specialist equipment

Other specialist equipment such as wheelchairs, bath seats, toilet frames etc may be available for loan or purchase from the local Red Cross loan centre. Please check this out before booking the Cottage and contact us if you require further information.

<http://www.redcross.org.uk/standard.asp?id=89425>

## Future Plans to improve Accessibility to National Trust Holiday Cottages

- We are currently in the process of writing accessibility guides for all our holiday cottages and improving access over time for all our guests. All feedback is very helpful in informing us of ways in which we can improve access to all our cottages. We welcome any comments or ideas from you about access at this cottage and thank you for taking the time to do this. Please do this in the most convenient way for you. See contact details below or information on website.

## About the Accessibility Guide

- This Accessibility Guide is intended to provide key information about the cottage that may be particularly relevant to guests with disabilities. Please contact us prior to booking if you would like information that is more specific and we will be happy to oblige.

Email: [cottages@nationaltrust.org.uk](mailto:cottages@nationaltrust.org.uk)

Phone: 0344 8002070

## Access for All at the National Trust

- The Access for All office works to improve access at all National Trust cottages and properties. The office welcomes comments and ideas on improving access.

Phone: 01793 818531

Email: [accessforall@nationaltrust.org.uk](mailto:accessforall@nationaltrust.org.uk)

July 2011